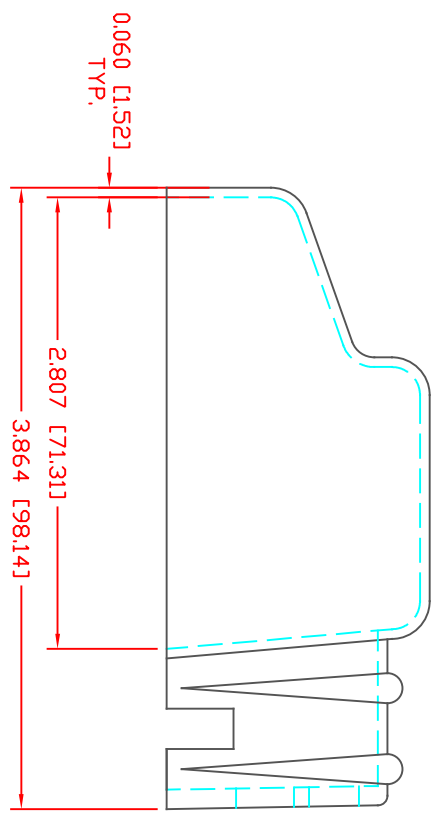
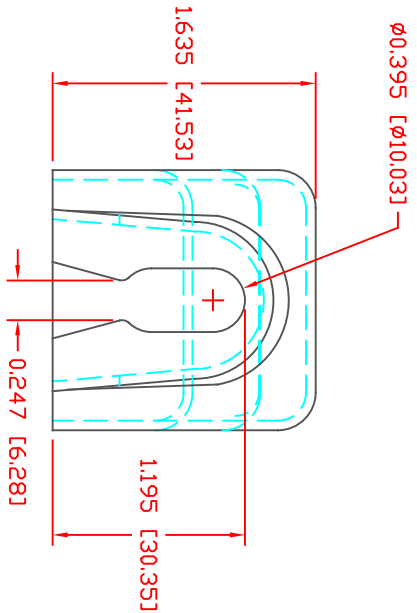


THE INFORMATION CONTAINED IN THIS DRAWING IS THE SOLE PROPERTY OF VTE INCORPORATED. ANY REPRODUCTION IN PART OR WHOLE WITHOUT THE WRITTEN PERMISSION OF VTE INCORPORATED IS PROHIBITED. VTE MAKES NO WARRANTY, EXPRESSED OR IMPLIED, AS TO THE SUITABILITY OF A PRODUCT FOR ANY INTENDED USE. THE CUSTOMER SHALL BEAR THE SOLE RESPONSIBILITY OF DETERMINING THE SUITABILITY OF ANY VTE PRODUCT FOR ITS END USE.

LT#	REVISIONS	DATE	INT.
1	ISS WAS L&E, REVISED TO AGREE WITH PARTS AS MANUFACTURED	15AUG13	BRH




4 GA. (.395" Ø)  
N4



VTE PART NO: 1101900102  
 MATERIAL: PVC  
 VENDOR PART NO: 9812-95-RED 683  
 SHORE DUREMETER: "A" 10 SEC. 95  
 SPECIFIC GRAVITY: 1.49  
 ULT. ELONGATION %: 200  
 MELTING TEMP: 345-365 F [174-185 C]  
 Tensile Strength PSI: 2100  
 Dielectric Strength, v./mil: 438  
 U.L. Rating: V2

DO NOT SCALE

SCALE FACTOR: NONE  
 ALL DIMENSIONS GIVEN AS: In [mm]  
 TOLERANCES UNLESS OTHERWISE SPECIFIED:  
 MOLDED PARTS: ±.030" [±0.8mm]  
 HARDWARE ITEMS: ±.010" [±0.25mm]



VTE Incorporated  
 5437 Robinson Road, P.O. Box 790  
 Pellston, Michigan 49769  
 Telephone: 1-800-527-9256, 231-539-8000  
 FAX: 231-539-0914

REF.	DATE:	DRN BY:	BRH	WEIGHT:
CUSTOMER DIMS	24MARIO	CHK'D BY:	BRH	.062 LBS [28.4 g]
TITLE: BATTERY TERMINAL INSULATOR				
MATERIAL: PVC		PART NO: 455N4V02		
COLOR: RED		DRG CLASS: REV A		