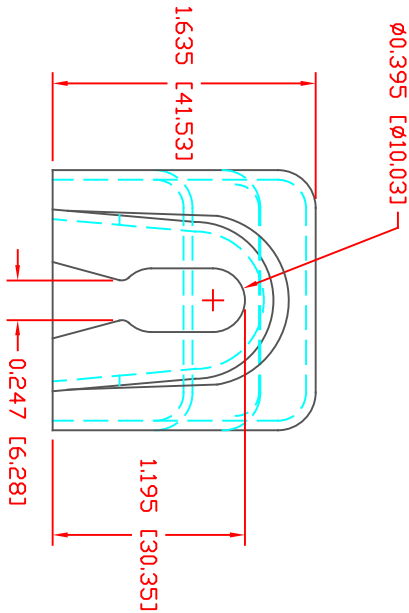
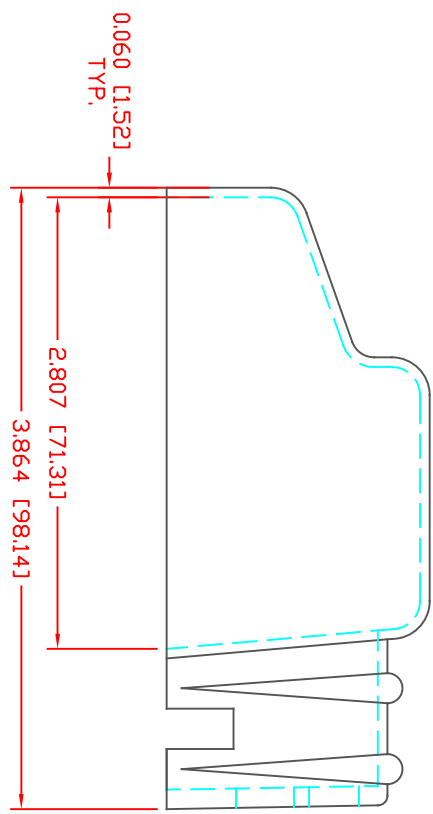
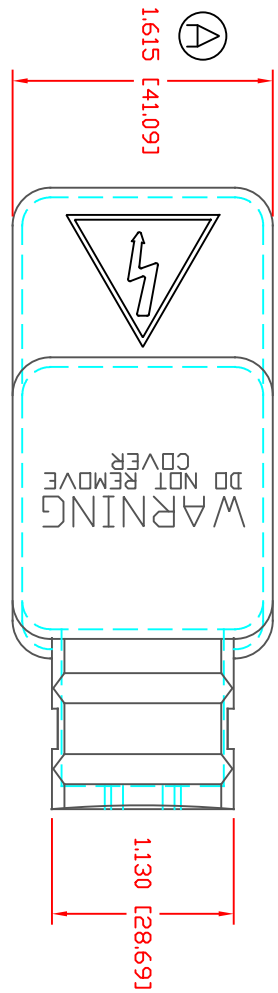



THE INFORMATION CONTAINED IN THIS DRAWING IS THE SOLE PROPERTY OF VTE INCORPORATED. ANY REPRODUCTION IN PART OR WHOLE WITHOUT THE WRITTEN PERMISSION OF VTE INCORPORATED IS PROHIBITED. VTE MAKES NO WARRANTY, EXPRESSED OR IMPLIED, AS TO THE SUITABILITY OF A PRODUCT FOR ANY INTENDED USE. THE CUSTOMER SHALL BEAR THE SOLE RESPONSIBILITY OF DETERMINING THE SUITABILITY OF ANY VTE PRODUCT FOR ITS END USE.

LT#	REVISIONS	DATE	INT.
1	ISS WAS L&E, REVISED TO AGREE WITH PARTS AS MANUFACTURED	15AUG13	BRH



SCALE FACTOR : NONE
 ALL DIMENSIONS GIVEN AS: In. [mm]
 TOLERANCES UNLESS OTHERWISE SPECIFIED :
 MOLDED PARTS: ±.030" [±0.8mm]
 HARDWARE ITEMS: ±.010" [±0.25mm]

VTE Incorporated
 5437 Robinson Road, P.O. Box 790
 Pellston, Michigan 49769
 Telephone: 1-800-527-9256, 231-539-8000
 FAX: 231-539-0914



VTE PART NO: 1101950114
 MATERIAL: PVC
 VENDOR PART NO: 9812-95-BLACK
 SHORE DUREMETER: 7A, 10 SEC. 95
 SPECIFIC GRAVITY: 1.5
 ULT. ELONGATION %: 200
 MELTING TEMP: 345-365 F [174-185 C]
 Tensile Strength PSI: 2100
 Dielectric Strength, v./mil: 384
 UL Rating: V2

DO NOT SCALE

REF.	DATE:	DRN BY:	BRH	WEIGHT:
CUSTOMER DIMS	24MAR10	CHK'D BY:	BRH	.062 LBS [28.4 g]
TITLE: BATTERY TERMINAL INSULATOR				
MATERIAL: PVC		PART NO: 455N4V14		
COLOR: BLACK		DRG CLASS: REV A		