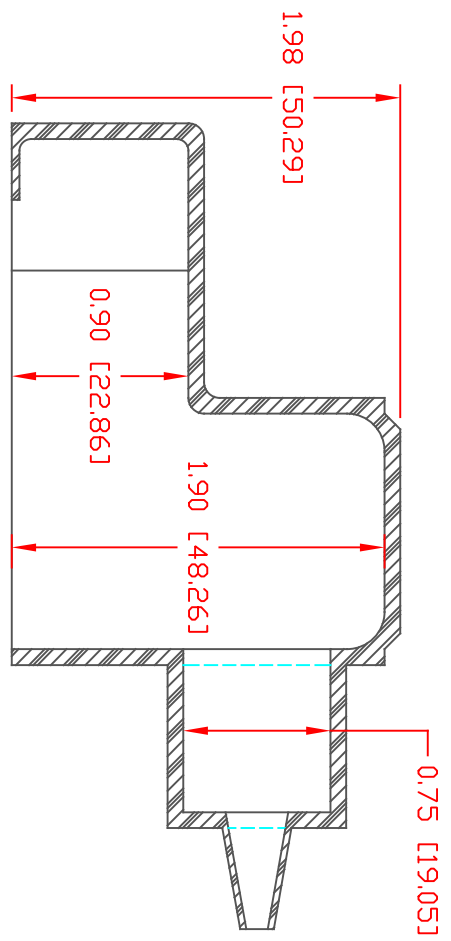
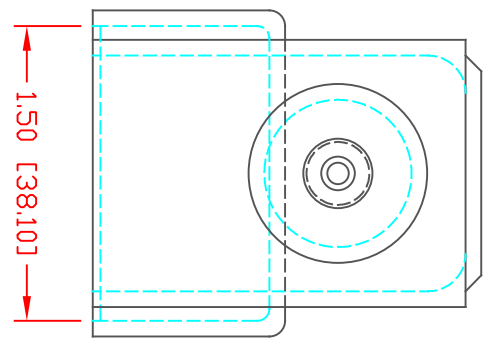


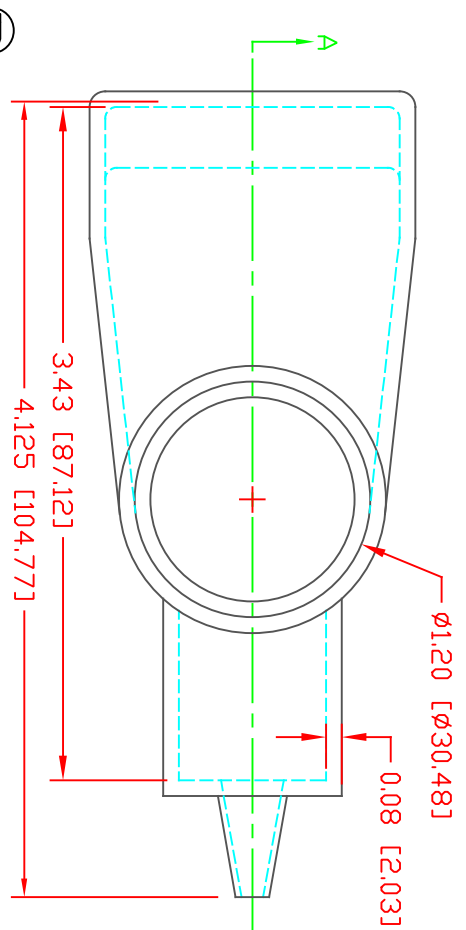
THE INFORMATION CONTAINED IN THIS DRAWING IS THE SOLE PROPERTY OF VTE INCORPORATED. ANY REPRODUCTION IN PART OR WHOLE WITHOUT THE WRITTEN PERMISSION OF VTE INCORPORATED IS PROHIBITED. VTE MAKES NO WARRANTY, EXPRESSED OR IMPLIED, AS TO THE SUITABILITY OF A PRODUCT FOR ANY INTENDED USE. THE CUSTOMER SHALL BEAR THE SOLE RESPONSIBILITY OF DETERMINING THE SUITABILITY OF ANY VTE PRODUCT FOR ITS END USE.



SECTION A-A

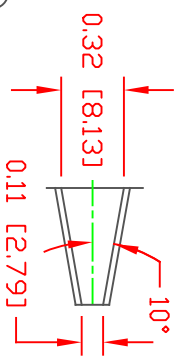


SEAL NO. 1 SHOWN

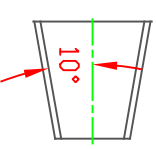


SEAL OPTIONS

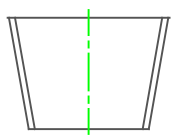
SEAL THICKNESS = .8



NO. 1
Cable Gages
10 - 6

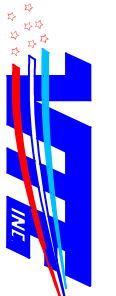


NO. 2
Cable Gages
6 - 1/0



NO. 3
Cable Gages
1/0 - 4/0

ALL DIMENSIONS GIVEN AS: in [mm]
MOLDED PARTS: ±.030" [±0.8mm]
HARDWARE ITEMS: ±.010" [±0.25mm]



VTE Incorporated
5437 Robinson Road, P.O. Box 790
Pellston, Michigan 49769
Telephone: 1-800-527-9256, 231-539-8000
FAX: 231-539-0914

MATERIAL PART NO: 1101700109
MATERIAL: BLUE PVC
VENDOR PART NO: 7844-70 BLUE 1812
SPECIFIC GRAVITY: 1.36
HARDNESS 10 SEC: 70
HARDNESS SCALE: A
TENSILE STRENGTH, PSI: 1100
ELONGATION, %: 310
TEAR STRENGTH, PPI: 200
FLAME CLASS UL: HB
MELT TEMP, DEGREES F [C]: 320-340 [160-171]
DIELECTRIC STRENGTH, V./MIL: N/A

DO NOT SCALE

LTR.	REVISIONS	DATE	INT.
↗	UPDATED OVERALL LENGTH DIMENSION	1-28-22	RAS
ⓑ	UPDATED MATERIAL INFORMATION	8-02-22	RAS

REF:	DATE:	DRN BY:	JC	WEIGHT:
	3-31-98	CHK'D BY:	JC	071 LBS. / 31.9 G.
TITLE:	MARINE ADAPTER WING NUT BOOT			
MATERIAL:	PVC	PART NO:	457N1V09	
COLOR:	BLUE	DRG CLASS:	REV B	