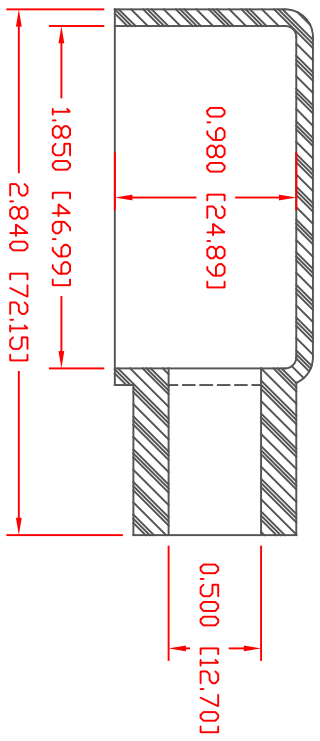
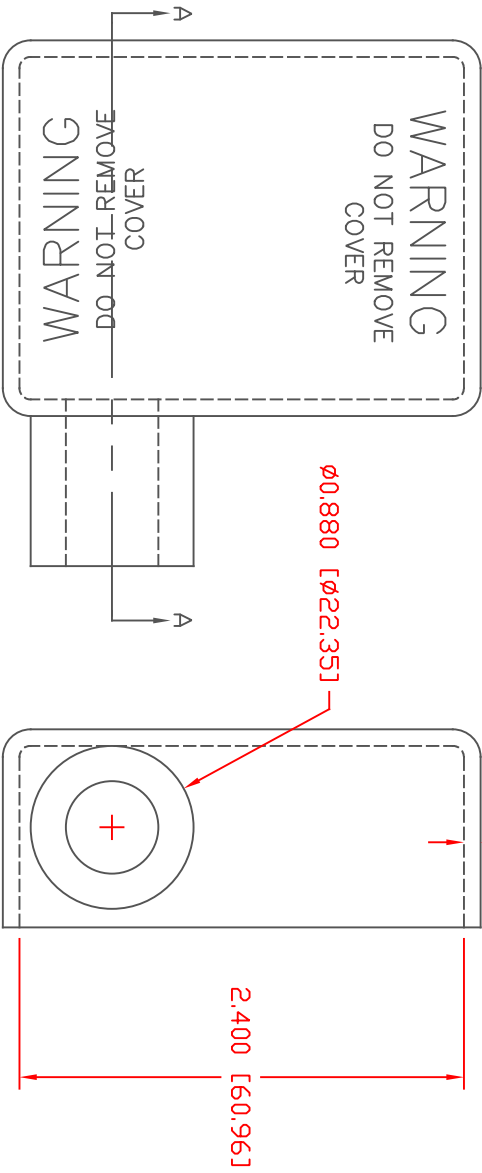


PROPRIETARY RIGHTS ARE CLAIMED FOR THE MATERIAL DISCLOSED IN THIS DRAWING.


LTR	REVISIONS	DATE	INT.
☞	UPDATED MATERIAL INFO	8-04-17	RAS



SECTION A-A

VTE Material Part No: 1101650114
 Material: BLACK PVC
 Max. Operating Temp: 9812-65
 Shore Durometer: 105 C
 Specific Gravity: 1.33
 Ult. Elongation %: "A" 10 SEC. 67/63
 Brittle Temp: 520
 Tensile Strength PSI: -36 C
 1563 PSI
 U.L. Rating: 94 V2
 MEETS: FMVSS.302

TYP. WALL THICKNESS = 2.3
 TOLERANCE UNLESS OTHERWISE SPECIFIED: ±0.30/±0.8mm
 RADIAL DIAMETERS TO BE MEASURED OVER MANDRELS,
 RING GAGES OR PIN GAGES OF SUITABLE SIZE



VTE Incorporated
 5437 Robinson Road, P.O. Box 790
 Pellston, Michigan 49769
 Telephone: 1-800-527-9256, 231-539-8000
 FAX: 231-539-0914

REF.	DATE	DRN BY:	JC	WEIGHT:
	4-6-98	CHK'D BY:		078 LBS. / 35.5 G
TITLE: BATTERY CABLE BOOT				
MATERIAL: PVC		PART NO. RIGHT HAND		
COLOR: BLACK		500R7 V14		