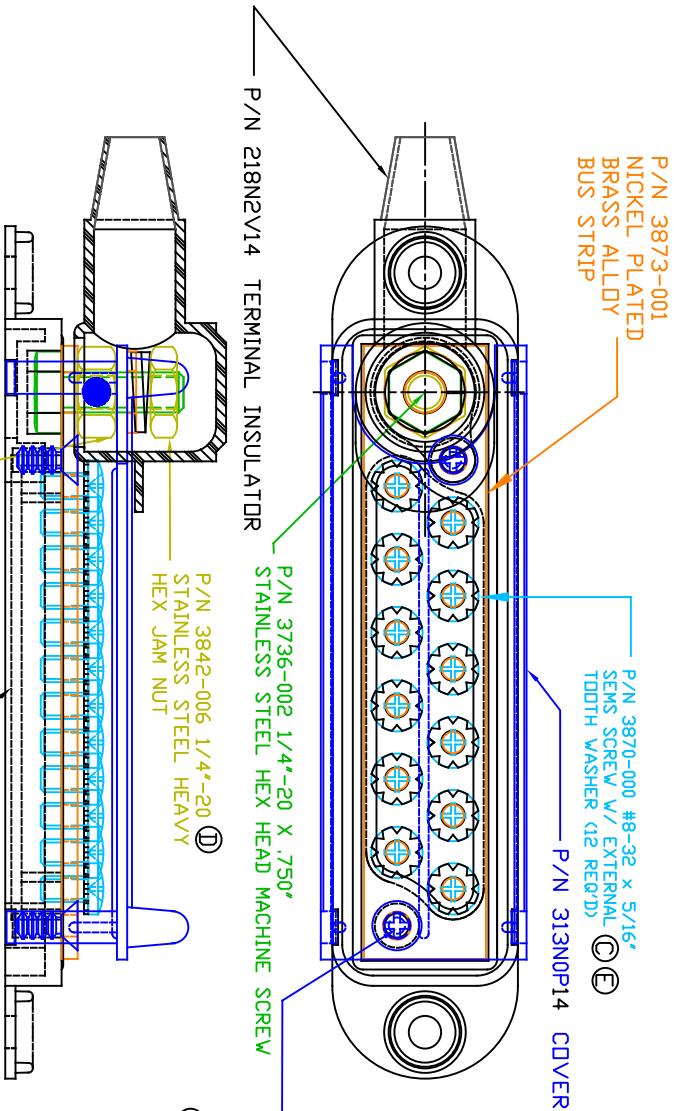


THE INFORMATION CONTAINED IN THIS DRAWING IS THE SOLE PROPERTY OF VTE INCORPORATED. ANY REPRODUCTION IN PART OR WHOLE WITHOUT THE WRITTEN PERMISSION OF VTE INCORPORATED IS PROHIBITED. VTE MAKES NO WARRANTY, EXPRESSED OR IMPLIED, AS TO THE SUITABILITY OF A PRODUCT FOR ANY INTENDED USE. THE CUSTOMER SHALL BEAR THE SOLE RESPONSIBILITY OF DETERMINING THE SUITABILITY OF ANY VTE PRODUCT FOR ITS END USE.



P/N 3873-001
NICKEL PLATED
BRASS ALLOY
BUS STRIP

P/N 3870-000 #8-32 x 5/16"
SEMS SCREW W/ EXTERNAL
TOOTH WASHER (12 RECD)

P/N 313N0P14 COVER

P/N 218N2V14 TERMINAL INSULATOR

P/N 3736-002 1/4"-20 X .750"
STAINLESS STEEL HEX HEAD MACHINE SCREW

P/N 3842-006 1/4"-20
STAINLESS STEEL HEAVY
HEX JAM NUT

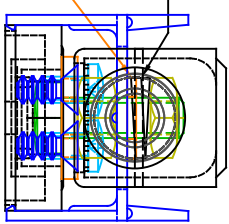
P/N 31225N14
MOLDED BASE

P/N 3842-B01 1/4"-20
TIN PLATED BRASS HEAVY HEX NUT
BLUE DOT TECHNOLOGY
< DO NOT REMOVE >

P/N 3874-000 #8x3/8" PHILLIPS
FLAT HEAD HIGH-LDW SCREW (2 RECD)
* FACTORY ASSEMBLED TO 8 IN./LBS.

P/N 3637-000 1/4"
STAINLESS STEEL
LOCK WASHER

P/N 3644-001
1/4" I.D. X .500" D.D.
STAINLESS STEEL
FLAT WASHER




SCALE FACTOR : NONE
ALL DIMENSIONS GIVEN AS: [in./mm]
TOLERANCES UNLESS OTHERWISE SPECIFIED :
MOLDED PARTS: ±.030" [±0.8mm]
HARDWARE ITEMS: ±.010" [±0.25mm]

MATERIAL PART NO:
MATERIAL:
VENDOR PART NO:
SPECIFIC GRAVITY:
MELTING TEMP:
UL RATING:

111210514UL
GLASS FILLED NYLON
HYLON N2015 HL BK
123
515 F (268 C)
UL 94 HB

INCLUDES P-16808110001 BLUE DOT MULTI LABEL, 1 PER CONTAINER
TESTED AT 240 AMPS @ 12VDC FOR 30 MINUTES, MAXIMUM
TEMPERATURE RISE WAS 7.8 DEG. C, MAXIMUM
TEMPERATURE RECORDED WAS 30.6 DEG. C.

LTR.	REVISIONS	DATE	INT.
A	REVISED AND REDRAWN	18AUG15	BRH
B	REVISED SUB-ASSEMBLY NOTE P/N 73873	04FEB16	RAS
C	UPDATED TORQUE SPEC	08-09-16	MDL
D	3842-006 WAS 3842-003	03-24-17	JMM
E	3870-000 WAS 3870, 3637-000 WAS 3637	03-29-17	JMM
F	3842-B01 WAS 3842-001	03-29-17	JMM
G	ADDED FACTORY TORQUE SPEC TO 3874-000	5-23-24	RAS
H	REVISED TORQUE SPEC FROM 10 IN./LBS.	11-13-24	RAS



VTE Incorporated
5437 Robinson Road, P.O. Box 790
Pellston, Michigan 49769
Telephone: 1-800-527-9256, 231-539-8000
FAX: 231-539-0914

REF.	DATE	DRN BY:	BRH	WEIGHT:
CUSTOMER DIMS	08-18-15	CHK'D BY:	BRH	
TITLE: 12-POINT TERMINAL STRIP SPECIAL WITH 313N0P14 COVER				
MATERIAL: GLASS-FILLED NYLON			PART NO. 71225XN14	
COLOR: BLACK		DRG CLASS REV H		