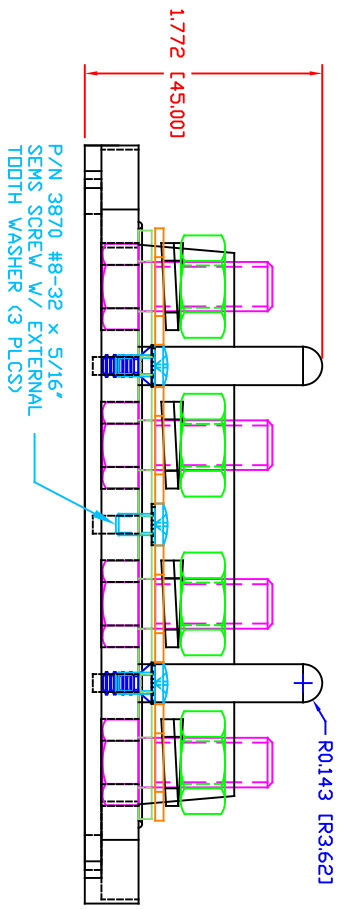
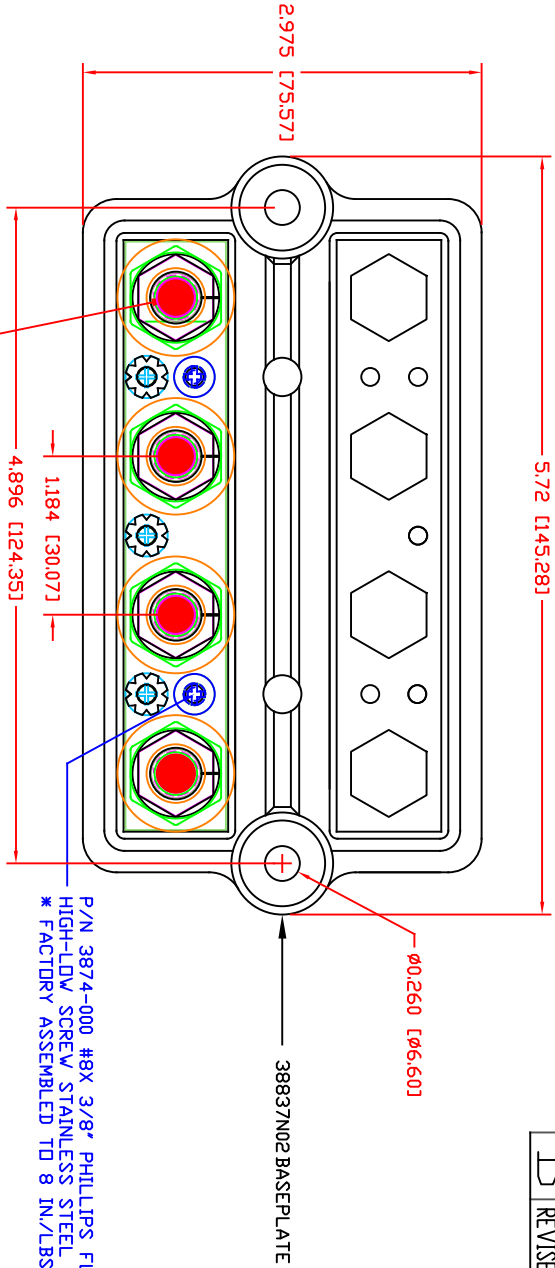
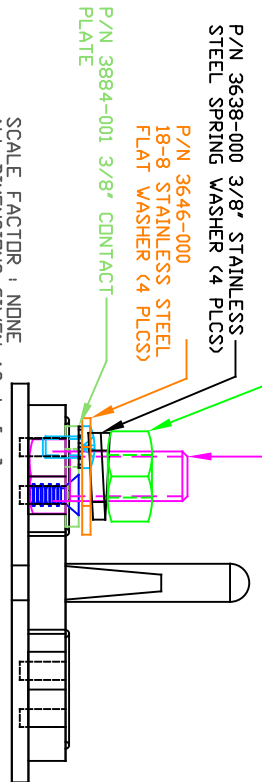


THE INFORMATION CONTAINED IN THIS DRAWING IS THE SOLE PROPERTY OF VTE INCORPORATED. ANY REPRODUCTION IN PART OR WHOLE WITHOUT THE WRITTEN PERMISSION OF VTE INCORPORATED IS PROHIBITED. VTE MAKES NO WARRANTY, EXPRESSED OR IMPLIED, AS TO THE SUITABILITY OF A PRODUCT FOR ANY INTENDED USE. THE CUSTOMER SHALL BEAR THE SOLE RESPONSIBILITY OF DETERMINING THE SUITABILITY OF ANY VTE PRODUCT FOR ITS END USE.

LT#	REVISIONS	DATE	INT.
A	REMOVED BLUE DOT INSTRUCTION	10-21-15	RAS
B	REPLACED P/N 3844-002 WITH P/N 3844-009	03-18-16	RAS
C	ADDED FACTORY TORQUE SPEC TO 3874-000	05-23-24	RAS
D	REVISED TORQUE SPEC FROM 10 IN./LBS.	11-14-24	RAS



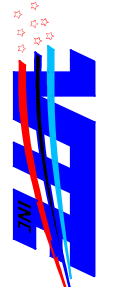
- P/N 3874-000 #8X 3/8" PHILLIPS FLAT HEAD HIGH-LDW SCREW STAINLESS STEEL (2 PLCS) \* FACTORY ASSEMBLED TO 8 IN./LBS. (D)
- P/N 3844-009 3/8"-16 HEAVY HEX NUT STAINLESS STEEL (4 PLCS)
- P/N 3638-000 3/8" STAINLESS STEEL SPRING WASHER (4 PLCS)
- P/N 3646-000 18-8 STAINLESS STEEL FLAT WASHER (4 PLCS)
- P/N 3884-001 3/8" CONTACT PLATE
- P/N 3740-006 3/8"-16 UNC X 1.00" S.S. BOLT (HEADED) (4 PLCS)



SCALE FACTOR: NONE  
 ALL DIMENSIONS GIVEN AS: In [mm]  
 TOLERANCES UNLESS OTHERWISE SPECIFIED:  
 MOLDED PARTS: ±.030" [±0.8mm]  
 HARDWARE ITEMS: ±.010" [±0.25mm]

MATERIAL PART NO: 7111210502  
 MATERIAL: GLASS FILLED NYLON  
 VENDOR PART NO: HYLON N2015 HL NAT  
 SPECIFIC GRAVITY: 1.23  
 MELTING TEMP: 515 F [268 C]  
 U.L. RATING: UL 94 HB

MAXIMUM RECOMMENDED FASTENER TORQUE: 180 IN./LBS.  
 CURRENT RATING: 250A @ 12VDC



VTE Incorporated  
 5437 Robinson Road, P.O. Box 790  
 Pellston, Michigan 49769  
 Telephone: 1-800-527-9256, 231-539-8000  
 FAX: 231-539-0914

REF.	DATE:	DRN BY:	BRH	WEIGHT:
CUSTOMER DIMS	08-20-09	CHK'D BY:	BRH	
TITLE:	3/8" 4-POINT BUS BAR			SCALE:
MATERIAL:	GLASS-FILLED NYLON			PART NO:
COLOR:	RED	DRG CLASS	REV D	738437N0N02