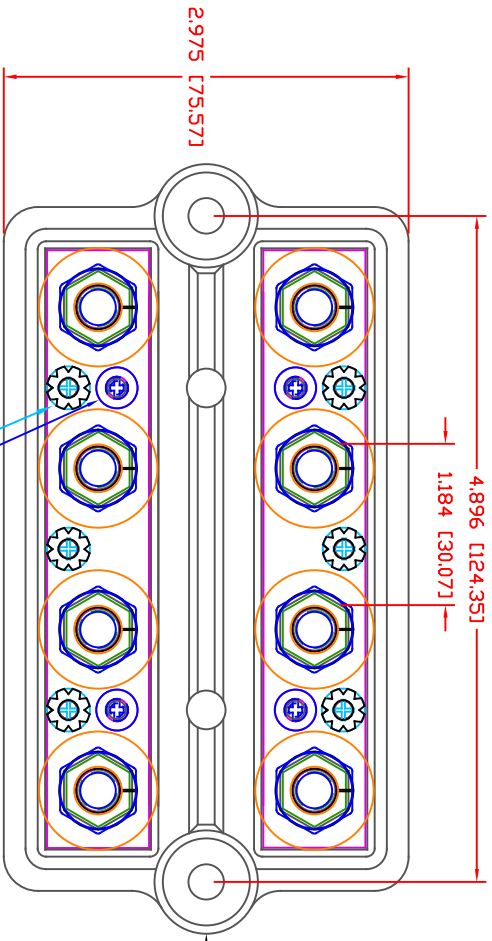
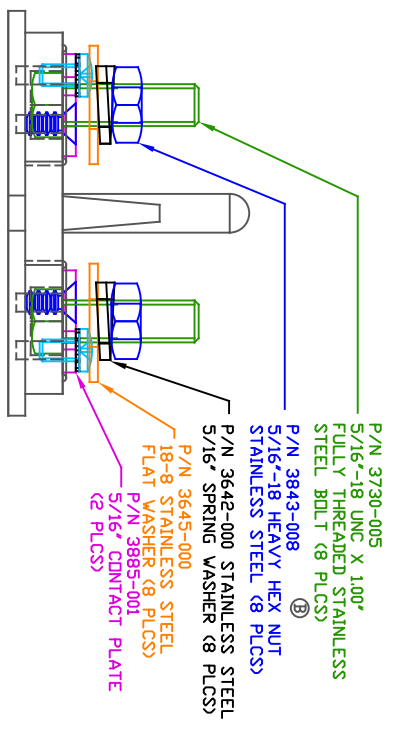
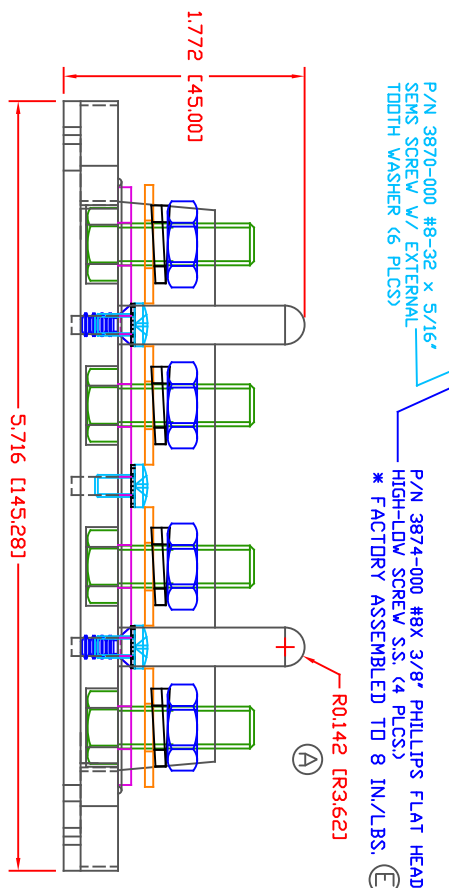


THE INFORMATION CONTAINED IN THIS DRAWING IS THE SOLE PROPERTY OF VTE INCORPORATED. ANY REPRODUCTION IN PART OR WHOLE WITHOUT THE WRITTEN PERMISSION OF VTE INCORPORATED IS PROHIBITED. VTE MAKES NO WARRANTY, EXPRESSED OR IMPLIED, AS TO THE SUITABILITY OF A PRODUCT FOR ANY INTENDED USE. THE CUSTOMER SHALL BEAR THE SOLE RESPONSIBILITY OF DETERMINING THE SUITABILITY OF ANY VTE PRODUCT FOR ITS END USE.



38831N14 BASEPLATE

ITR.	REVISIONS	DATE	INT.
A	ADDED FULL RADIUS FOR COVER RETAINER POSTS	01-10-07	BRH
B	P/N 3843-002 REPLACED WITH 3843-008	03-28-16	RAS
C	ADDED NEWTON METERS VALUE TO TORQUE SPEC	11-16-17	RAS
D	ADDED FACTORY TORQUE SPEC TO 3874-000	5-23-24	RAS
E	REVISED TORQUE SPEC FROM 10 IN./LBS.	11-13-24	RAS



ALL DIMENSIONS GIVEN AS: In [mm]
 MOLD'D PARTS: ±.030" [±0.8mm]
 HARDWARE ITEMS: ±.010" [±0.25mm]

MATERIAL PART NO:
 MATERIAL:
 VENDOR PART NO:
 SPECIFIC GRAVITY:
 MELTING TEMP:
 U.L. RATING:

111210514UL
 GLASS FILLED NYLON
 HYLON N2015 HL BK
 1.23
 515 F [268 C]
 UL 94 HB

MAX RECOMMENDED FASTENER TORQUE: 5/16" STUDS 144 IN./LBS. [16.2 Nm]
 < ANTI-SEIZE RECOMMENDED >
 MAX RECOMMENDED CURRENT: 250 AMPS TOTAL @ 12 VDC

VTE Incorporated
 5437 Robinson Road, P.O. Box 790
 Pellston, Michigan 49769
 Telephone: 1-800-527-9256, 231-539-8000
 FAX: 231-539-0914

REF:	DATE:	DRN BY:	BRH	WEIGHT:
CUSTOMER DIMS	10-24-06	CHK'D BY:	BRH	
TITLE:	5/16" DUAL 4-PIINT BUS BAR			
MATERIAL:	GLASS FILLED NYLON	PART NO:	738831N0N14	
COLOR:	BLACK	DRG CLASS	REV E	