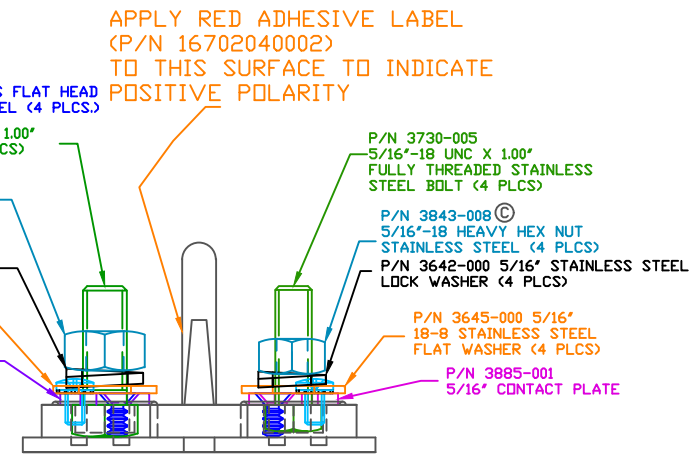
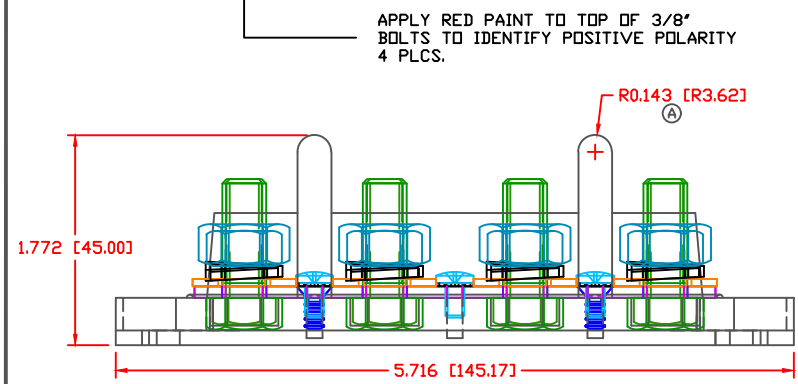
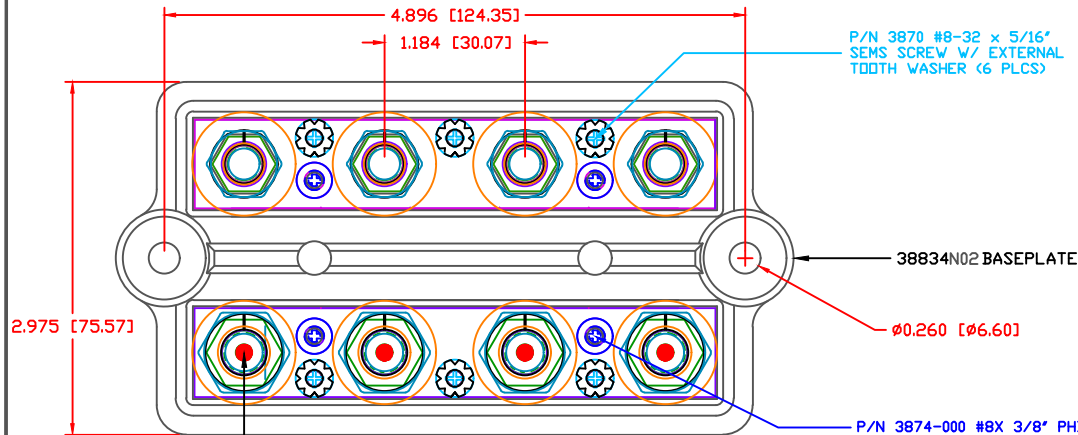


THE INFORMATION CONTAINED IN THIS DRAWING IS THE SOLE PROPERTY OF VTE INCORPORATED. ANY REPRODUCTION IN PART OR WHOLE WITHOUT THE WRITTEN PERMISSION OF VTE INCORPORATED IS PROHIBITED. VTE MAKES NO WARRANTY, EXPRESSED OR IMPLIED, AS TO THE SUITABILITY OF A PRODUCT FOR ANY INTENDED USE. THE CUSTOMER SHALL BEAR THE SOLE RESPONSIBILITY OF DETERMINING THE SUITABILITY OF ANY VTE PRODUCT FOR ITS END USE.

LTR.	REVISIONS	DATE	INT.
A	ADDED FULL RADIUS FOR COVER RETAINER POSTS ADDED RED PAINT FOR POLARITY ID	01-10-07	BRH
B	REPLACED P/N 3844-002 WITH P/N 3844-009	03-18-16	RAS
C	REPLACED P/N 3843-002 WITH P/N 3843-008	03-18-16	RAS
D	ADDED NEWTON METERS VALUE TO TORQUE SPEC	11-16-17	RAS



SCALE FACTOR : NONE
ALL DIMENSIONS GIVEN AS: in [mm]
TOLERANCES UNLESS OTHERWISE SPECIFIED :
MOLDED PARTS: ±.030" [±0.8mm]
HARDWARE ITEMS: ±.010" [±0.25mm]

MATERIAL PART NO: 7111210502
MATERIAL: GLASS FILLED NYLON
VENDOR PART NO: NYLON N2015 HL NAT
SPECIFIC GRAVITY: 1.23
MELTING TEMP: 515 F [268 C]
U.L. RATING: UL 94 HB

MAX RECOMMENDED FASTENER TORQUE: 5/16"-18 NUTS 144 IN./LBS. [16.2 Nm]
3/8"-16 NUTS 180 IN./LBS. [20.3 Nm]
(ANTI-SEIZE RECOMMENDED)

MAXIMUM RECOMMENDED CURRENT: 250A @ 12VDC



VTE Incorporated
5437 Robinson Road, P.O. Box 790
Pellston, Michigan 49769
Telephone: 1-800-527-9256, 231-539-8000
FAX: 231-539-0914

REF:	DATE:	DRN BY:	BRH	WEIGHT:
CUSTOMER DIMS	10-24-06	CHK'D BY:	BRH	
TITLE: 5/16" AND 3/8" DUAL 4-POINT BUS				
MATERIAL: GLASS FILLED NYLON			PART NO.	
COLOR: RED			738834N0N02	
DRG CLASS		REV D		