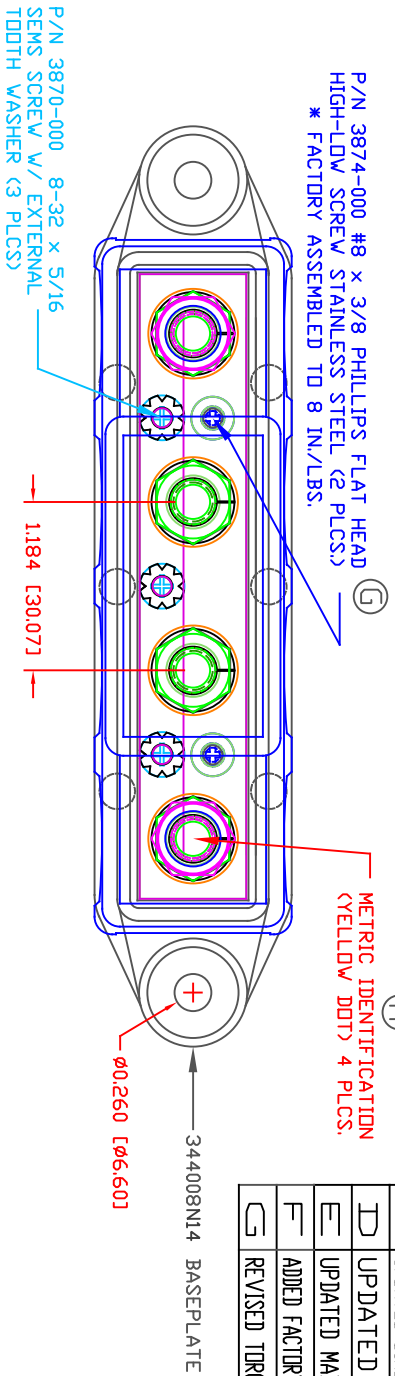


THE INFORMATION CONTAINED IN THIS DRAWING IS THE SOLE PROPERTY OF VTE INCORPORATED. ANY REPRODUCTION IN PART OR WHOLE WITHOUT THE WRITTEN PERMISSION OF VTE INCORPORATED IS PROHIBITED. VTE MAKES NO WARRANTY, EXPRESSED OR IMPLIED, AS TO THE SUITABILITY OF A PRODUCT FOR ANY INTENDED USE. THE CUSTOMER SHALL BEAR THE SOLE RESPONSIBILITY OF DETERMINING THE SUITABILITY OF ANY VTE PRODUCT FOR ITS END USE.

P/N 3874-000 #8 x 3/8 PHILLIPS FLAT HEAD HIGH-LOW SCREW STAINLESS STEEL (2 PLCS)
 * FACTORY ASSEMBLED TO 8 IN./LBS.

METRIC IDENTIFICATION (YELLOW DOT) 4 PLCS.



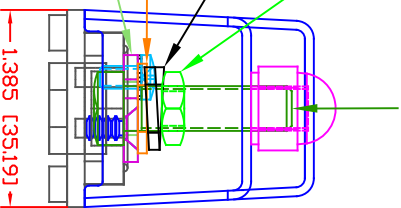
P/N 3731-001 M8 x 1.25 x 30 FULLY THREADED STAINLESS STEEL BOLT (4 PLCS)

P/N 3846-000 M8 x 1.25 HEAVY JAM NUT 18-8 STAINLESS STEEL (4 PLCS)

P/N 3638-002 18-8 STAINLESS STEEL LOCK WASHER (4 PLCS)

P/N 3643-001 18-8 STAINLESS STEEL FLAT WASHER (4 PLCS)

P/N 3885-001 5/16" CONTACT PLATE



SCALE FACTOR : NONE
 ALL DIMENSIONS GIVEN AS: in [mm]
 TOLERANCES UNLESS OTHERWISE SPECIFIED :
 MOLDED PARTS: ±0.30" [±0.8mm]
 HARDWARE ITEMS: ±.010" [±0.25mm]

MATERIAL PART NO:
 MATERIAL:
 VENDOR PART NO:
 SPECIFIC GRAVITY:
 MELTING TEMP:
 UL RATING:

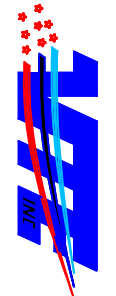
111210514UL
 GLASS FILLED NYLON
 HYLON N2015 HL BK
 1.23
 515 F [268 C]
 UL 94 HB

INCLUDES COVER P/N 723N7 AND ASSEMBLY P/N 74008N14
 MAXIMUM RECOMMENDED FASTENER TORQUE: (144 IN./LBS.) [16.2 Nm]
 (ANTI-SEIZE RECOMMENDED)

MAXIMUM RECOMMENDED AMPERAGE:

250 AMPS @ 12VDC

LTR	REVISIONS	DATE	INT.
A	ADDED METRIC IDENTIFICATION METHOD	04-05-11	BRH
B	REMOVED BLUE DOT INSTRUCTION	10-21-15	RAS
C	UPDATED DIMENSIONS AND DESCRIPTIONS	02-02-16	RAS
D	UPDATED CURRENT RATING	06-02-16	RAS
E	UPDATED MAXIMUM AMPERAGE RATING	1-30-17	RAS
F	ADDED FACTORY TORQUE SPEC TO 3874-000	5-23-24	RAS
G	REVISED TORQUE SPEC FROM 10 IN./LBS.	11-13-24	RAS



VTE Incorporated
 5437 Robinson Road, P.O. Box 790
 Pellston, Michigan 49769
 Telephone: 1-800-527-9256, 231-539-8000
 FAX: 231-539-0914

REF.	DATE:	DRN BY:	BRH	WEIGHT:
CUSTOMER DIMS	08-16-10	CHK'D BY:	BRH	.458LBS [207.80G]
TITLE:	BUSBAR, 4 POINT, M8 W/ COVER,			SCALE: NONE
MATERIAL:	GLASS-FILLED NYLON	PART NO.		
COLOR:	BLACK	DRG CLASS	REV G	
				PART NO. 74008N14