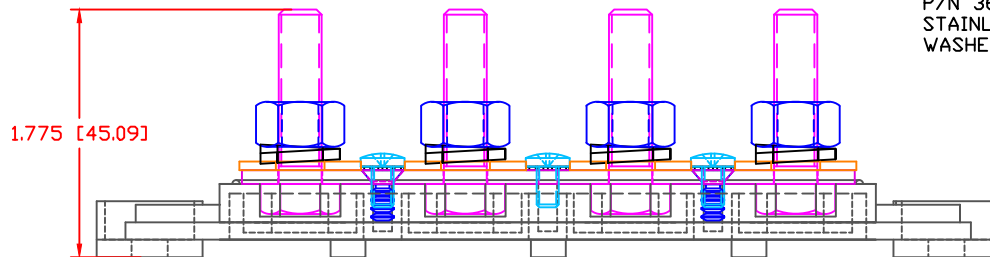
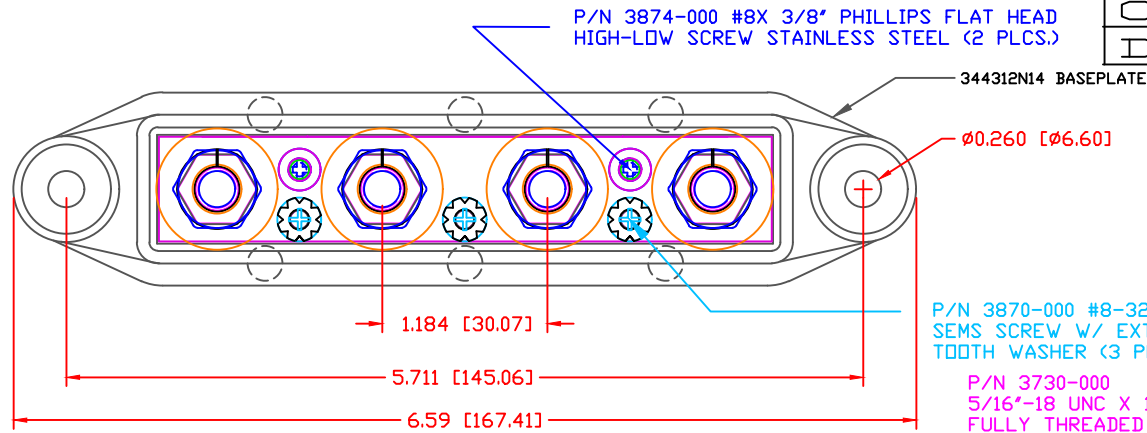


THE INFORMATION CONTAINED IN THIS DRAWING IS THE SOLE PROPERTY OF VTE INCORPORATED. ANY REPRODUCTION IN PART OR WHOLE WITHOUT THE WRITTEN PERMISSION OF VTE INCORPORATED IS PROHIBITED. VTE MAKES NO WARRANTY, EXPRESSED OR IMPLIED, AS TO THE SUITABILITY OF A PRODUCT FOR ANY INTENDED USE. THE CUSTOMER SHALL BEAR THE SOLE RESPONSIBILITY OF DETERMINING THE SUITABILITY OF ANY VTE PRODUCT FOR ITS END USE.

LTR.	REVISIONS	DATE	INT.
A	REMOVED BLUE DOT INSTRUCTION	10-21-15	RAS
B	REPLACED P/N 3843-002 WITH P/N 3843-008	03-28-16	RAS
C	UPDATED CURRENT RATING	06-02-16	RAS
D	UPDATED MAXIMUM AMPERAGE RATING	30JAN17	RAS



P/N 3870-000 #8-32 x 5/16"
SEMS SCREW W/ EXTERNAL
TOOTH WASHER (3 PLCS)

P/N 3730-000
5/16"-18 UNC X 1.25"
FULLY THREADED STAINLESS
STEEL BOLT (4 PLCS)

P/N 3843-008
5/16"-18 HEAVY HEX NUT
STAINLESS STEEL (4 PLCS)

P/N 3642-000
STAINLESS STEEL SPRING
WASHER (4 PLCS)

P/N 3645-000
18-8 STAINLESS STEEL
FLAT WASHER (4 PLCS)

P/N 3885-001
5/16" CONTACT PLATE

1.385 [35.19]

SCALE FACTOR : NONE
ALL DIMENSIONS GIVEN AS: in [mm]
TOLERANCES UNLESS OTHERWISE SPECIFIED :
MOLDED PARTS: ±.030" [±0.8mm]
HARDWARE ITEMS: ±.010" [±0.25mm]

MATERIAL PART NO:
MATERIAL:
VENDOR PART NO:
SPECIFIC GRAVITY:
MELTING TEMP:
U.L. RATING:

1111210514UL
GLASS FILLED NYLON
NYLON N2015 HL BK
1.23
515 F [268 C]
UL 94 HB

MAXIMUM RECOMMENDED FASTENER TORQUE: 12 FT./LBS. (144 IN./LBS.)
(ANTI-SEIZE RECOMMENDED)

MAXIMUM RECOMMENDED AMPERAGE: 250 AMPS @ 12VDC



VTE Incorporated
5437 Robinson Road, P.O. Box 790
Pellston, Michigan 49769
Telephone: 1-800-527-9256, 231-539-8000
FAX: 231-539-0914

REF:	DATE:	DRN BY:	BRH	WEIGHT:
CUSTOMER DIMS	06-03-10	CHK'D BY:	BRH	
TITLE:			SCALE:	
MATERIAL: GLASS-FILLED NYLON			PART NO.	
COLOR: BLACK			74312N0N14	
DRG CLASS			REV D	