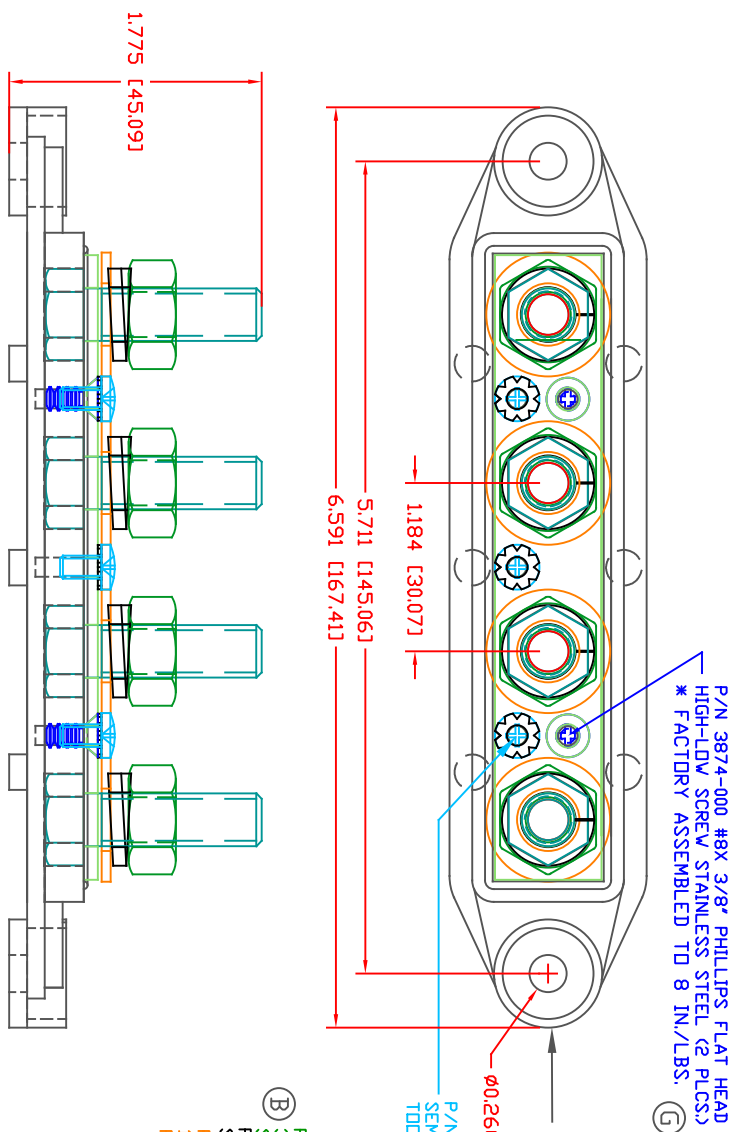


THE INFORMATION CONTAINED IN THIS DRAWING IS THE SOLE PROPERTY OF VTE INCORPORATED. ANY REPRODUCTION IN PART OR WHOLE WITHOUT THE WRITTEN PERMISSION OF VTE INCORPORATED IS PROHIBITED. VTE MAKES NO WARRANTY, EXPRESSED OR IMPLIED, AS TO THE SUITABILITY OF A PRODUCT FOR ANY INTENDED USE. THE CUSTOMER SHALL BEAR THE SOLE RESPONSIBILITY OF DETERMINING THE SUITABILITY OF ANY VTE PRODUCT FOR ITS END USE.



P/N 3874-000 #8x 3/8" PHILLIPS FLAT HEAD HIGH-LOW SCREW, STAINLESS STEEL (2 PLCS)
 * FACTORY ASSEMBLED TO 8 IN./LBS.

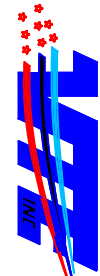
LTR	REVISIONS	DATE	INT.
A	REMOVED BLUE DOT INSTRUCTION	10-21-15	RAS
B	REPLACED P/N 3844-002 WITH P/N 3844-009	03-18-16	RAS
C	UPDATED CURRENT RATING	06-02-16	RAS
D	UPDATED MAXIMUM AMPERAGE RATING	01-30-17	RAS
E	UPDATED "GALLING" STATEMENT	09-18-23	RAS
F	ADDED FACTORY TORQUE SPEC TO 3874-000	5-23-24	RAS
G	REVISED TORQUE SPEC FROM 10 IN./LBS.	11-14-24	RAS

- 344375N02 BASEPLATE
- $\phi 0.260$ [$\phi 6.60$]
- P/N 3870-000 #8-32 x 5/16" SEMS SCREW W/ EXTERNAL TOOTH WASHER (3 PLCS)
- P/N 3740-001 3/8"-16 UNC X 1.25" STAINLESS STEEL BOLT (4 PLCS)
- P/N 3844-009 3/8"-16 HEAVY HEX NUT STAINLESS STEEL (4 PLCS)
- P/N 3638-000 3/8" STAINLESS STEEL SPRING WASHER (4 PLCS)
- P/N 3646-000 18-8 STAINLESS STEEL FLAT WASHER (4 PLCS)
- P/N 3884-001 3/8" CONTACT PLATE
- 1.385 [35.191]

SCALE FACTOR : NONE
 ALL DIMENSIONS GIVEN AS: in [mm]
 TOLERANCES UNLESS OTHERWISE SPECIFIED :
 MOLDED PARTS: ±0.30" [±0.8mm]
 HARDWARE ITEMS: ±.010" [±0.25mm]

MATERIAL PART NO: 711210502
 MATERIAL: GLASS FILLED NYLON
 VENDOR PART NO: HYLON N2015 HL NAT
 SPECIFIC GRAVITY: 1.23
 MELTING TEMP: 515 F [268 C]
 UL RATING: UL 94 HB

MAXIMUM RECOMMENDED FASTENER TORQUE: 15 FT./LBS. (180 IN./LBS.)
 (IF WARRANTED, DIELECTRIC GREASE CAN BE USED TO PREVENT GALLING)
 MAXIMUM RECOMMENDED AMPERAGE: 250 AMPS @ 12VDC



VTE Incorporated
 5437 Robinson Road, P.O. Box 790
 Pellston, Michigan 49769
 Telephone: 1-800-527-9256, 231-539-8000
 FAX: 231-539-0914

REF:	DATE:	DRN BY:	BRH	WEIGHT:
CUSTOMER DIMS:	06-03-10	CHK'D BY:	BRH	.512LBS [232.38G]
TITLE:	BUSBAR, 4 POINT, 3/8"			SCALE: NONE
MATERIAL: GLASS-FILLED NYLON	PART NO:			74375N0N02
COLOR: RED	DRG CLASS:	REV G		