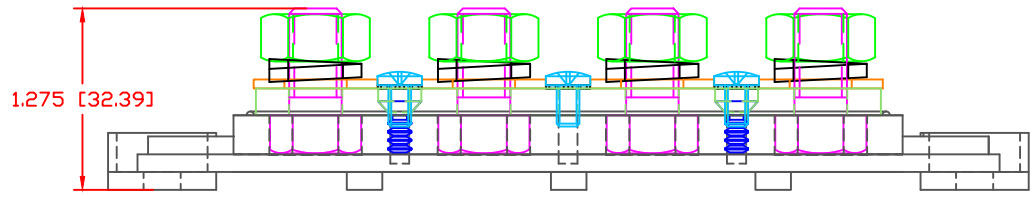
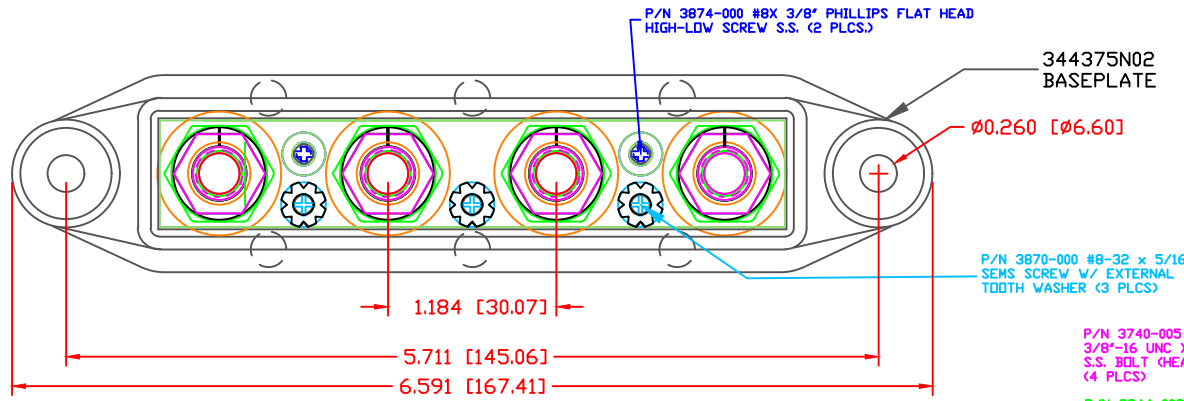


THE INFORMATION CONTAINED IN THIS DRAWING IS THE SOLE PROPERTY OF VTE INCORPORATED. ANY REPRODUCTION IN PART OR WHOLE WITHOUT THE WRITTEN PERMISSION OF VTE INCORPORATED IS PROHIBITED.

LTR.	REVISIONS	DATE	INT.
A	REMOVED BLUE DOT INSTRUCTION	10-21-15	RAS
B	REPLACED P/N 3844-002 WITH P/N 3844-009	03-18-16	RAS
C	UPDATED CURRENT RATING	06-02-16	RAS
D	ASSEMBLY OBSOLETE 8-08-17	8-15-17	RAS



344375N02
BASEPLATE

P/N 3870-000 #8-32 x 5/16"
SEMS SCREW W/ EXTERNAL
TOOTH WASHER (3 PLCS)

P/N 3740-005
3/8"-16 UNC X 0.75"
S.S. BOLT (HEADED)
(4 PLCS)

B P/N 3844-009
3/8"-16 HEAVY HEX NUT
STAINLESS STEEL (4 PLCS)

P/N 3638-000 3/8" STAINLESS
STEEL SPRING WASHER (4 PLCS)

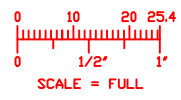
P/N 3646-000
18-8 STAINLESS STEEL
FLAT WASHER (4 PLCS)

P/N 3884-001X
3/8" CONTACT PLATE
SUPPLIED BY CUSTOMER

1.385 [35.19]

TOLERANCE UNLESS OTHERWISE SPECIFIED:
 MOLDED PRODUCTS ONLY: ±0.30"/±0.8mm
 HARDWARE ITEMS: ±0.010"/±0.25mm
 RADIAL DIAMETERS TO BE MEASURED OVER MANDRELS,
 RING GAGES OR PIN GAGES OF SUITABLE SIZE

© MAXIMUM RECOMMENDED FASTENER TORQUE: 15 FT./LBS. (180 IN./LBS.)
 MAXIMUM RECOMMENDED AMPERAGE: 350 AMPS @ 12VDC
 BASE MATERIAL: GLASS-REINFORCED NYLON
 BASE MATERIAL U.L. RATING: 94 HB
 VTE MATERIAL P/N: 7111210502



VTE Incorporated
 5437 Robinson Road, P.O. Box 790
 Pellston, Michigan 49769
 Telephone: 1-800-527-9256, 231-539-8000
 FAX: 231-539-0914

REF:	DATE:	DRN BY: BRH	WEIGHT:
CUSTOMER DIMS	05-08-13	CHK'D BY: BRH	
TITLE: BUSBAR, 4 POINT, 3/8" SPECIAL FOR EMP			SCALE:
MATERIAL:		PART NO.	
		74375N0N02X1	
COLOR:	DRG CLASS	REV D	