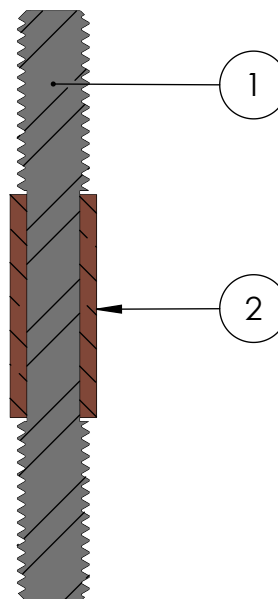
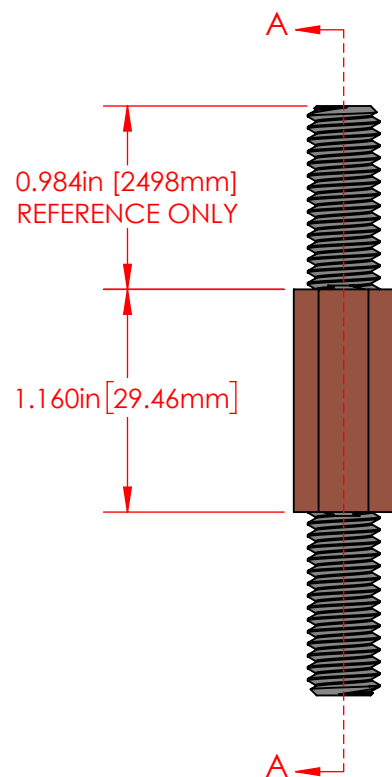
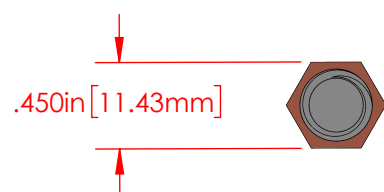
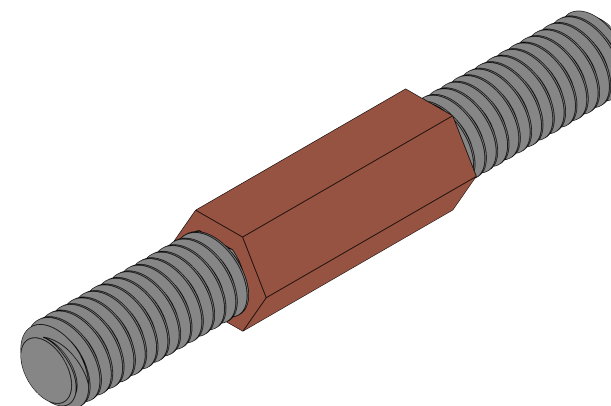


REVISIONS			
REV.	DESCRIPTION	DATE	APPROVED
E	Redrawn in Solidworks	12/11/2023	RAS



SECTION A-A



ITEM NO.	PART NUMBER	DESCRIPTION	QTY.
1	3742-007	3/8"-16 Nickel Plated Steel Double Ended Stud	1
2	3863-000	3/8" Copper Core Bushing	1

P/N 7618-000
Power Bushing
3/8"-16 Threaded Core
Shaft Assembly

Part Material :
Copper/Nickel Plated Steel

ALL DIMENSIONS GIVEN AS : INCH [METRIC]
TOLERANCES UNLESS OTHERWISE SPECIFIED :
HARDWARE PRODUCTS : $\pm .010"$ / $\pm 0.25\text{mm}$

PRINTED COPIES ARE NOT CONTROLLED
PROPRIETARY AND CONFIDENTIAL
THE INFORMATION CONTAINED IN THIS
DRAWING IS THE SOLE PROPERTY OF
VTE INCORPORATED. ANY REPRODUCTION
IN PART OR AS A WHOLE WITHOUT THE WRITTEN
PERMISSION OF VTE INCORPORATED PROHIBITED.



VTE INCORPORATED

5437 Robinson Road, P.O. Box 790
Pellston, Michigan 49769 USA
Telephone : 1-800-527-9256, 231-539-8000
Fax : 231-539-0914, Efax : 231-344-5914

REV	E	NAME	DATE
DRAWN BY:		RAS	12-11-23
SIZE	A	CHECKED BY:	
DO NOT SCALE DRAWING			

TITLE: 3/8" Inner Core Assembly

DWG. NO. **7618-000**