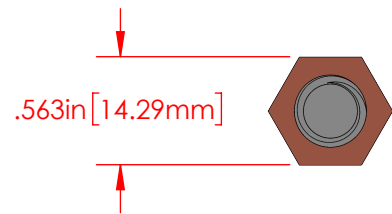
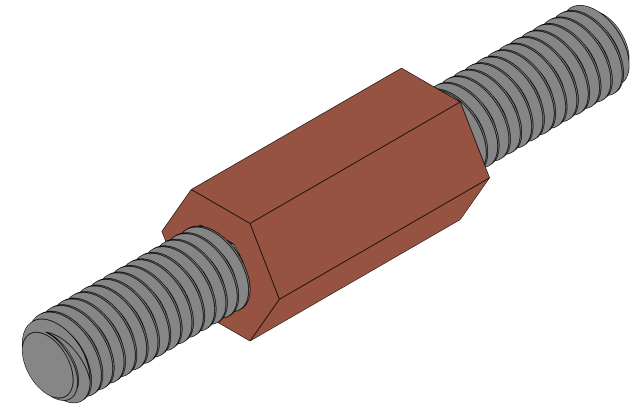
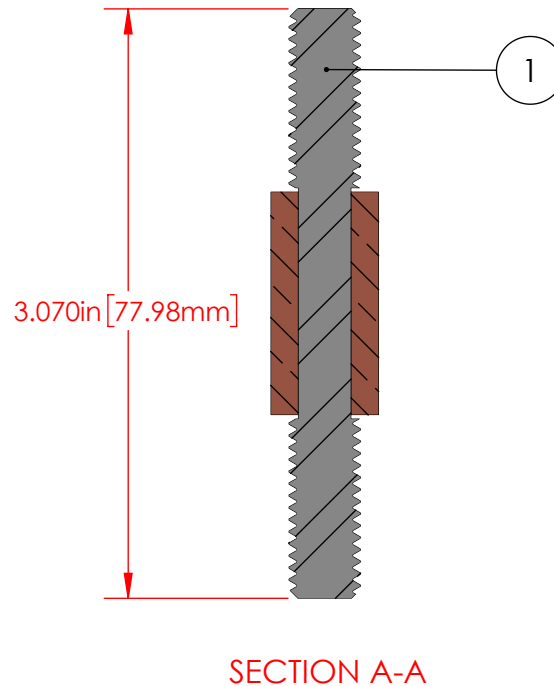
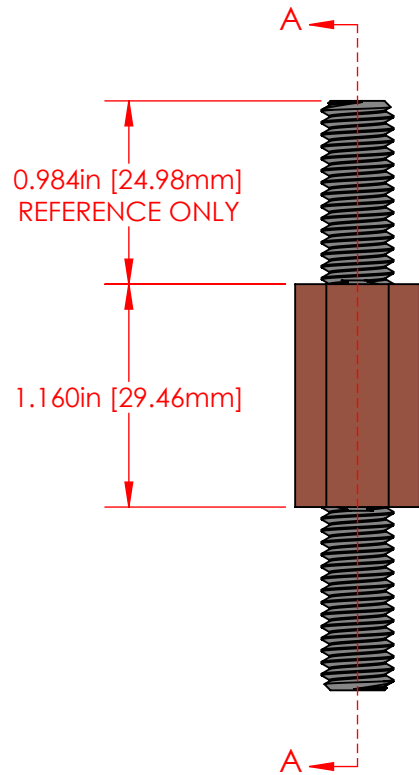


REVISIONS			
REV.	DESCRIPTION	DATE	APPROVED
A	Redrawn in Solidworks	11/15/2023	RAS



ITEM NO.	PART NUMBER	DESCRIPTION	QTY.
1	3742-007	3/8"-16 Nickel Plated Steel Double Ended Stud	1
2	3863-002	3/8" Copper Core Bushing High Amp	1

P/N 7618-001
Power Bushing
3/8"-16 Threaded Core
Shaft Assembly

Part Material :
Copper/Nickel Plated Steel

ALL DIMENSIONS GIVEN AS : INCH [METRIC]
TOLERANCES UNLESS OTHERWISE SPECIFIED :
HARDWARE PRODUCTS : $\pm .010"$ / $\pm 0.25\text{mm}$

PRINTED COPIES ARE NOT CONTROLLED
PROPRIETARY AND CONFIDENTIAL
THE INFORMATION CONTAINED IN THIS
DRAWING IS THE SOLE PROPERTY OF
VTE INCORPORATED. ANY REPRODUCTION
IN PART OR AS A WHOLE WITHOUT THE WRITTEN
PERMISSION OF VTE INCORPORATED PROHIBITED.



VTE INCORPORATED

5437 Robinson Road, P.O. Box 790
Pellston, Michigan 49769 USA
Telephone : 1-800-527-9256, 231-539-8000
Fax : 231-539-0914, EFax : 231-344-5914

REV		NAME	DATE
	DRAWN BY:	RAS	11/15/23
SIZE	CHECKED BY:		
A	DO NOT SCALE DRAWING		

TITLE: 3/8" Inner Core Assembly

DWG. NO. **7618-001**