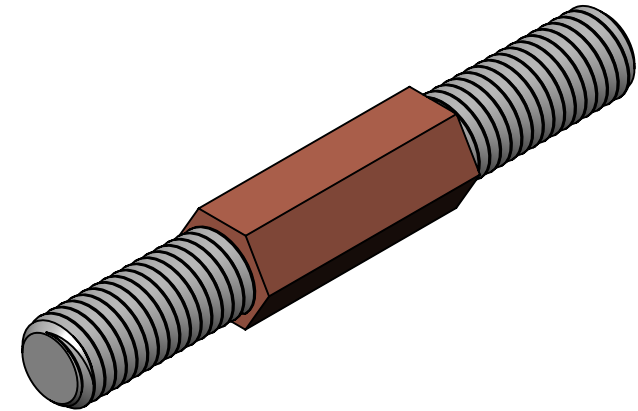
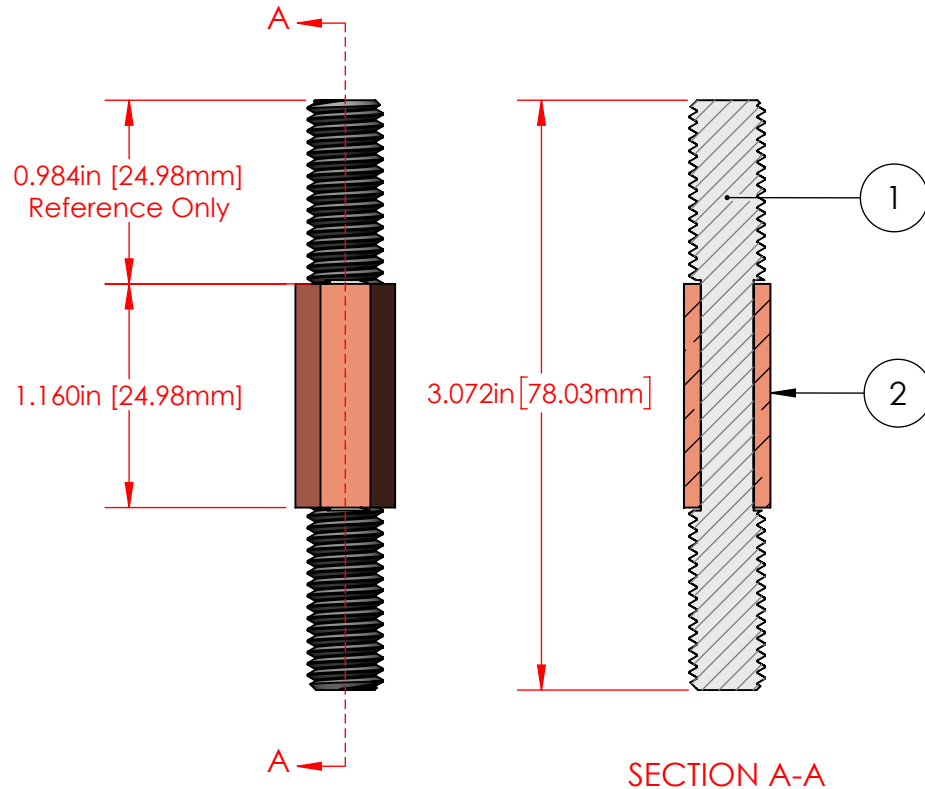


REVISIONS			
REV.	DESCRIPTION	DATE	APPROVED
F	Redrawn in Solidworks	11/15/2023	RAS



ITEM NO.	PART NUMBER	DESCRIPTION	QTY.
1	3742-009	M10 x 1.5 Nickel Plated Steel Double Ended Stud	1
2	3864-000	M10 Copper Core Bushing	1

P/N Power Bushing
M10 x1.5 Threaded core
Shaft Assembly

Part Material :
Copper/Nickel Plated Steel

ALL DIMENSIONS GIVEN AS : INCH [METRIC]
TOLERANCES UNLESS OTHERWISE SPECIFIED :
HARDWARE PRODUCTS : $\pm .010"$ / $\pm 0.25\text{mm}$

PRINTED COPIES ARE NOT CONTROLLED
PROPRIETARY AND CONFIDENTIAL
THE INFORMATION CONTAINED IN THIS
DRAWING IS THE SOLE PROPERTY OF
VTE INCORPORATED. ANY REPRODUCTION
IN PART OR AS A WHOLE WITHOUT THE WRITTEN
PERMISSION OF VTE INCORPORATED PROHIBITED.



VTE INCORPORATED

5437 Robinson Road, P.O. Box 790
Pellston, Michigan 49769 USA
Telephone : 1-800-527-9256, 231-539-8000
Fax : 231-539-0914, Efax : 231-344-5914

REV	F	NAME	RAS	DATE	11/15/23
SIZE	A	CHECKED BY:			
DO NOT SCALE DRAWING					

TITLE:	10mm Inner Core Assembly
DWG. NO.	7619-000