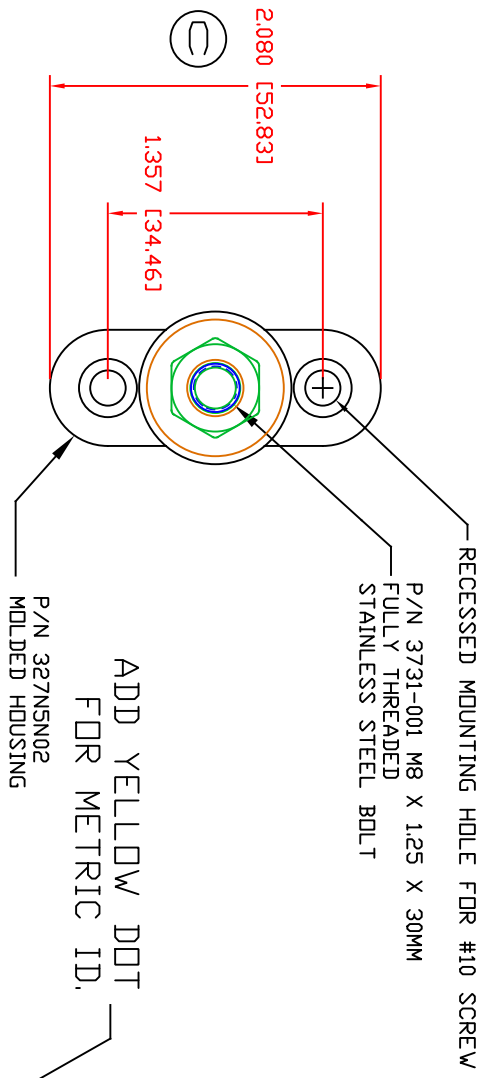
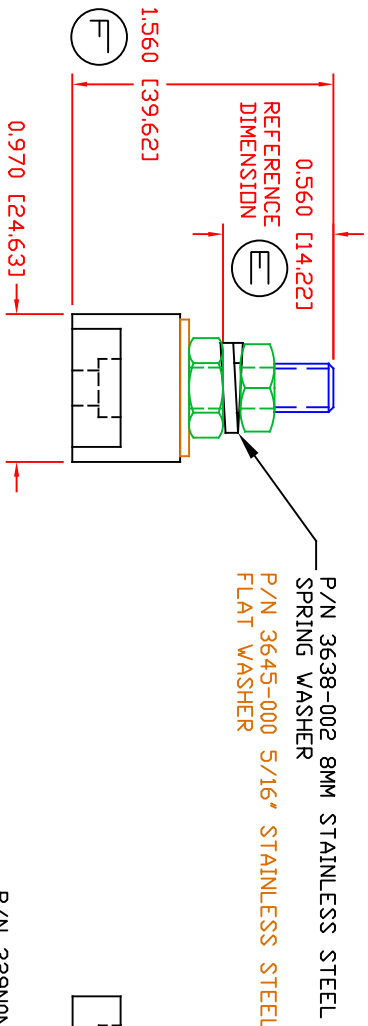


THE INFORMATION CONTAINED IN THIS DRAWING IS THE SOLE PROPERTY OF VTE INCORPORATED. ANY REPRODUCTION IN PART OR WHOLE WITHOUT THE WRITTEN PERMISSION OF VTE INCORPORATED IS PROHIBITED. VTE MAKES NO WARRANTY, EXPRESSED OR IMPLIED, AS TO THE SUITABILITY OF A PRODUCT FOR ANY INTENDED USE. THE CUSTOMER SHALL BEAR THE SOLE RESPONSIBILITY OF DETERMINING THE SUITABILITY OF ANY VTE PRODUCT FOR ITS END USE.

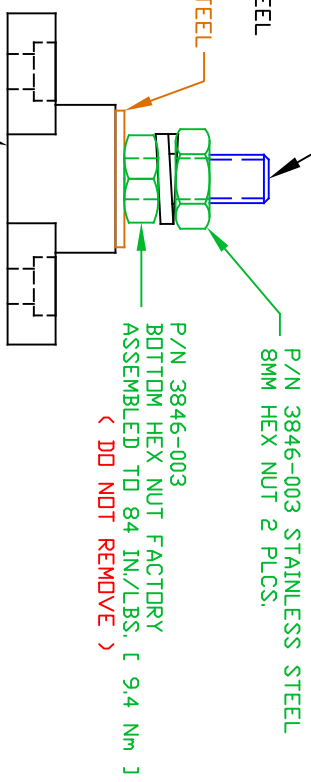
LTR.	REVISIONS	DATE	INT.
A	ADDED CURRENT RATING	9-19-18	RAS
B	REPLACED CURRENT LIMITS WITH TEMPERATURE LIMIT	10-12-18	RAS
C	UPDATED MOUNTING DIMENSIONS	11-09-21	RAS
D	UPDATED OVERALL HEIGHT DIMENSION FROM 1.547 [24.63]	1-4-23	RAS
E	0.560 [14.22] WAS 0.953 [24.20]	2-17-23	RAS
F	1.560 [39.62] WAS 1.940 [49.27]	2-17-23	RAS



ADD YELLOW DOT FOR METRIC ID.



P/N 329N0N02 CAVITY PLUG (NOT SHOWN)

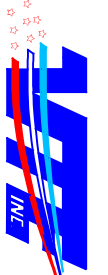


MATERIAL PART NO:  
MATERIAL:  
VENDOR PART NO:  
SPECIFIC GRAVITY:  
MELTING TEMP:  
UL RATING:

7111210502  
GLASS FILLED NYLON  
HYLON N2015 HL NAT  
1.23  
515 F [268 C]  
UL 94 HB

MAXIMUM RECOMMENDED TORQUE:  
96 IN./LBS.  
(10.8 Nm)

OVERALL ASSEMBLY TEMPERATURE NOT TO EXCEED 140 DEGREES F  
( 60 DEGREES C )



**VTE Incorporated**  
5437 Robinson Road, P.O. Box 790  
Pellston, Michigan 49769  
Telephone: 1-800-527-9256, 231-539-8000  
FAX: 231-539-0914

REF:	DATE:	DRN BY:	RAS	WEIGHT:
CUSTOMER DIMS	7-17-17	CHK'D BY:	PJK	
TITLE:		8MM SMALL JUNCTION STUD		
MATERIAL:	GLASS FILLED NYLON	PART NO.		
COLOR:	RED	DRG CLASS	REV F	77008N02