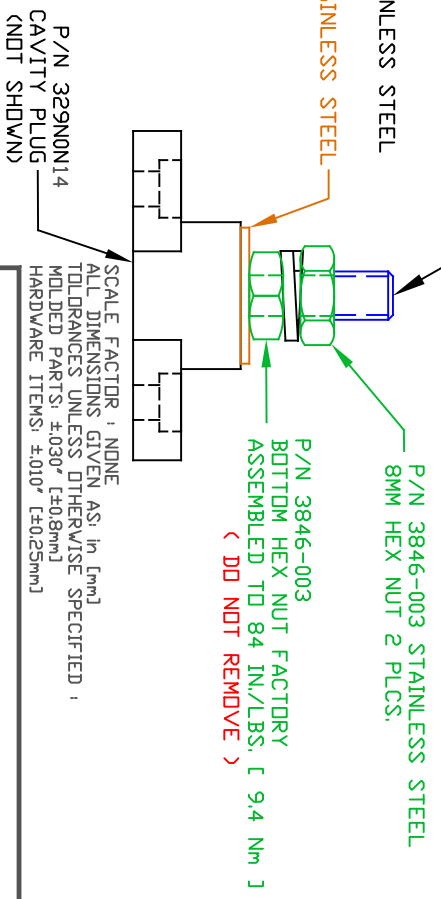
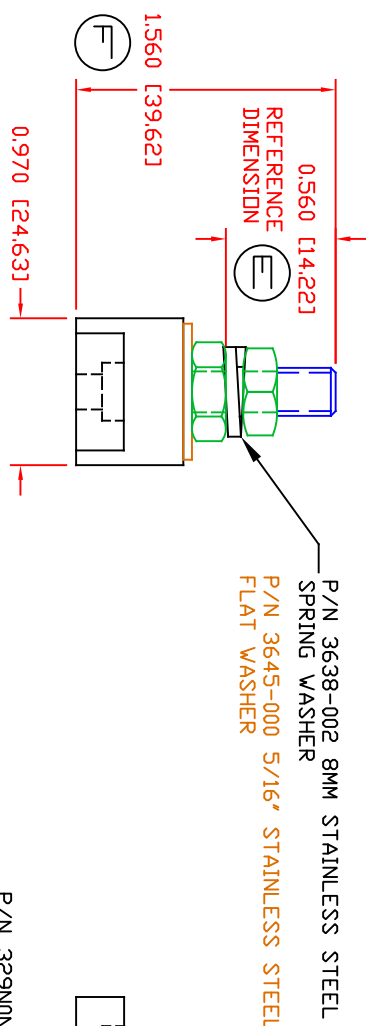
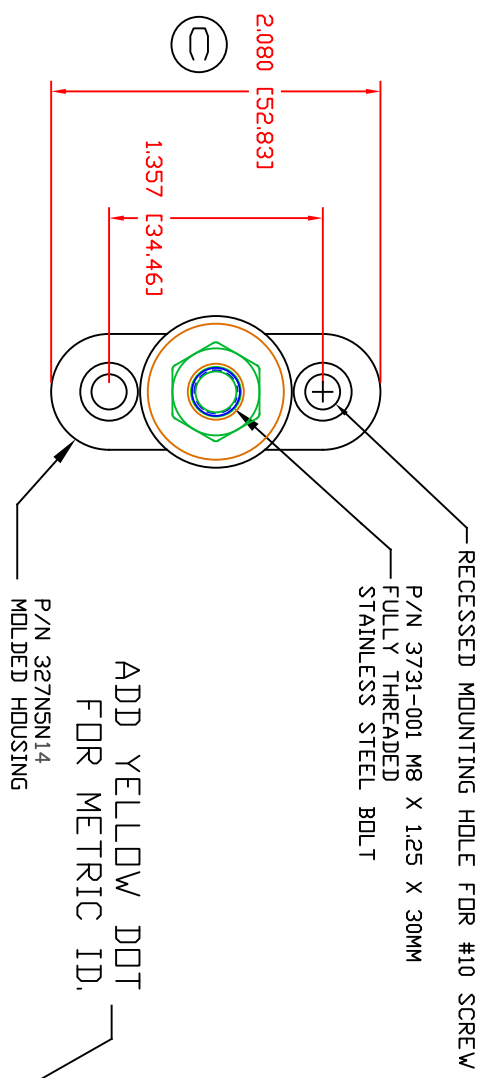


THE INFORMATION CONTAINED IN THIS DRAWING IS THE SOLE PROPERTY OF VTE INCORPORATED. ANY REPRODUCTION IN PART OR WHOLE WITHOUT THE WRITTEN PERMISSION OF VTE INCORPORATED IS PROHIBITED. VTE MAKES NO WARRANTY, EXPRESSED OR IMPLIED, AS TO THE SUITABILITY OF A PRODUCT FOR ANY INTENDED USE. THE CUSTOMER SHALL BEAR THE SOLE RESPONSIBILITY OF DETERMINING THE SUITABILITY OF ANY VTE PRODUCT FOR ITS END USE.


LR.	REVISIONS	DATE	INT.
A	ADDED CURRENT RATING	9-19-18	RAS
B	REPLACED CURRENT LIMITS WITH TEMPERATURE LIMIT	10-12-18	RAS
C	UPDATED MOUNTING DIMENSIONS	11-09-21	RAS
D	UPDATED OVERALL HEIGHT DIMENSION FROM 1.547 [24.63]	1-4-23	RAS
E	0.560 [14.22] WAS 0.953 [24.20]	2-17-23	RAS
F	1.560 [39.62] WAS 1.940 [49.27]	2-17-23	RAS



MATERIAL PART NO:
 MATERIAL:
 VENDOR PART NO:
 SPECIFIC GRAVITY:
 MELTING TEMP:
 U.L. RATING:
 MAXIMUM RECOMMENDED TORQUE:

1111210514UL
 GLASS FILLED NYLON
 NYLON N2015 HL BK
 1.23
 515 F [268 C]
 UL 94 HB
 96 IN./LBS.
 (10.8 Nm)

OVERALL ASSEMBLY TEMPERATURE NOT TO EXCEED 140 DEGREES F
 (60 DEGREES C)



VTE Incorporated
 5437 Robinson Road, P.O. Box 790
 Pellston, Michigan 49769
 Telephone: 1-800-527-9256, 231-539-8000
 FAX: 231-539-0914

REF:	DATE:	DRN BY:	RAS	WEIGHT:
CUSTOMER DIMS	7-17-17	CHK'D BY:	PKJ	
TITLE: 8MM SMALL JUNCTION STUD				
MATERIAL:	GLASS FILLED NYLON	PART NO:	77008N14	
COLOR:	BLACK	DRG CLASS	REV F	