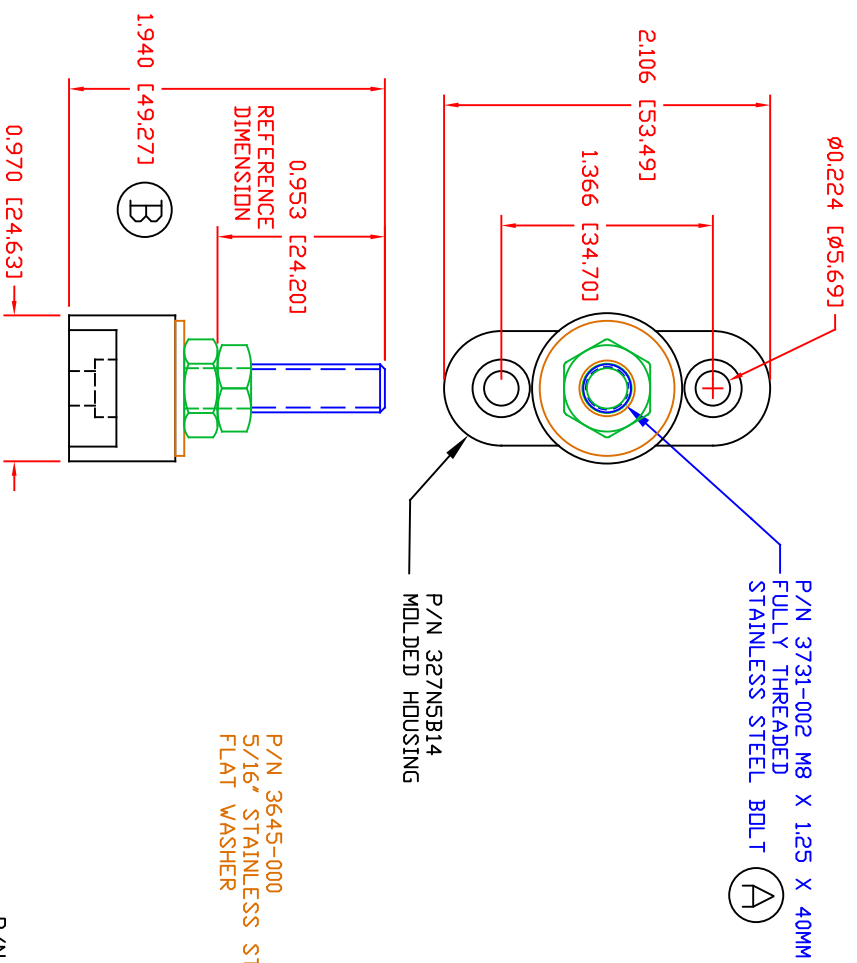
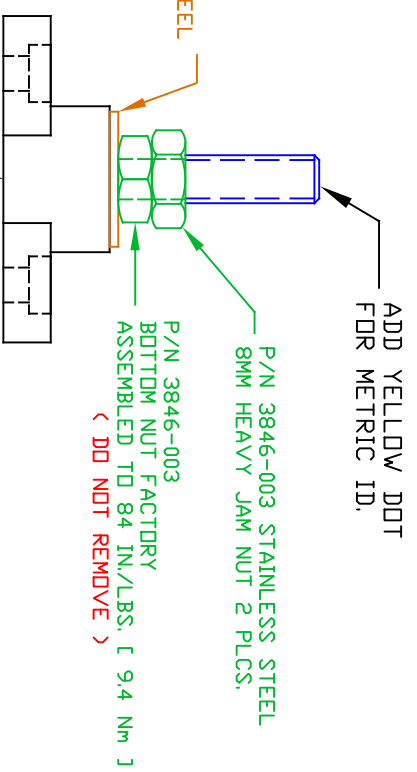


THE INFORMATION CONTAINED IN THIS DRAWING IS THE SOLE PROPERTY OF VTE INCORPORATED. ANY REPRODUCTION IN PART OR WHOLE WITHOUT THE WRITTEN PERMISSION OF VTE INCORPORATED IS PROHIBITED. VTE MAKES NO WARRANTY, EXPRESSED OR IMPLIED, AS TO THE SUITABILITY OF A PRODUCT FOR ANY INTENDED USE. THE CUSTOMER SHALL BEAR THE SOLE RESPONSIBILITY OF DETERMINING THE SUITABILITY OF ANY VTE PRODUCT FOR ITS END USE.

LR	REVISIONS	DATE	INT.
A	3731-002 P/N CORRECTED FROM 3731-001	5-10-21	EJE
B	UPDATED OVERALL HEIGHT DIMENSION FROM 1.547 (39.29)	6-28-23	RAS



P/N 329NOB14
CAVITY PLUG
(NOT SHOWN)



P/N 3846-003
8MM HEAVY JAM NUT 2 PLCS.
P/N 3645-000
5/16" STAINLESS STEEL
FLAT WASHER
P/N 3731-002
FULLY THREADED
STAINLESS STEEL BOLT
(A)

SCALE FACTOR : NONE
ALL DIMENSIONS GIVEN AS: In [mm]
TOLERANCES UNLESS OTHERWISE SPECIFIED :
MOLDED PARTS: ±.030" [±0.8mm]
HARDWARE ITEMS: ±.010" [±0.25mm]

MATERIAL PART NO: 111200514
MATERIAL: GLASS FILLED NYLON
VENDOR PART NO: S 60G1 V30 ISN
SPECIFIC GRAVITY: 1.42
MELTING TEMP: 432 F [222 C]
UL. RATING: UL 94 V0

VTE Incorporated
5437 Robinson Road, P.O. Box 790
Pellston, Michigan 49769
Telephone: 1-800-927-9256, 231-539-8000
FAX: 231-539-0914

REF:	DATE:	DRN BY:	EJE	WEIGHT:
	6-26-23	CHK'D BY:	PAK	
TITLE: BMW JUNCTION STUD, NO LOCK WASHER, EXTENDED STUD LENGTH				
MATERIAL:		PART NO:		
MPE		77008X1B14		
COLOR: GREY		DRG CLASS		
REV B				
MAXIMUM RECOMMENDED TORQUE: 96 IN./LBS. [10.8 N/m]				