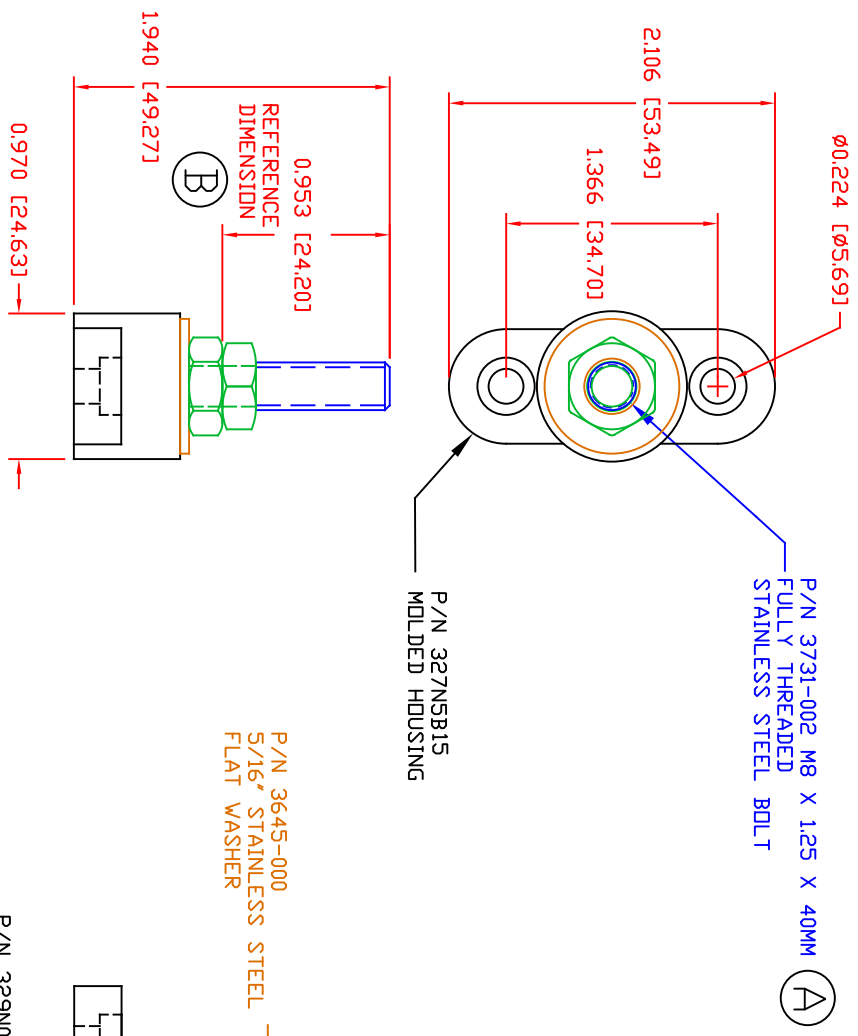


THE INFORMATION CONTAINED IN THIS DRAWING IS THE SOLE PROPERTY OF VTE INCORPORATED. ANY REPRODUCTION IN PART OR WHOLE WITHOUT THE WRITTEN PERMISSION OF VTE INCORPORATED IS PROHIBITED. VTE MAKES NO WARRANTY, EXPRESSED OR IMPLIED, AS TO THE SUITABILITY OF A PRODUCT FOR ANY INTENDED USE. THE CUSTOMER SHALL BEAR THE SOLE RESPONSIBILITY OF DETERMINING THE SUITABILITY OF ANY VTE PRODUCT FOR ITS END USE.

LR	REVISIONS	DATE	INT.
A	3731-002 P/N CORRECTED FROM 3731-001	5-10-21	EJE
B	UPDATED OVERALL HEIGHT DIMENSION FROM 1.547 (39.29)	1-4-23	RAS



P/N 3731-002 M8 X 1.25 X 40MM  
FULLY THREADED  
STAINLESS STEEL BOLT (A)

P/N 327NSB15  
MOLDED HOUSING

P/N 3645-000  
5/16" STAINLESS STEEL  
FLAT WASHER

ADD YELLOW DOT  
FOR METRIC ID.

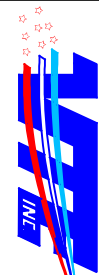
P/N 3846-003 STAINLESS STEEL  
8MM HEAVY JAM NUT 2 PLCS.

P/N 3846-003  
BOTTOM NUT FACTORY  
ASSEMBLED TO 84 IN./LBS. [ 9.4 Nm ]  
( DO NOT REMOVE )

P/N 329NOB15  
CAVITY PLUG  
(NOT SHOWN)

SCALE FACTOR : NONE  
ALL DIMENSIONS GIVEN AS: In [mm]  
TOLERANCES UNLESS OTHERWISE SPECIFIED :  
MOLDED PARTS: ±.030" [±0.8mm]  
HARDWARE ITEMS: ±.010" [±0.25mm]

MATERIAL PART NO: 111200515  
MATERIAL: GLASS FILLED NYLON  
VENDOR PART NO: S 60G1 V30 15N  
SPECIFIC GRAVITY: 1.42  
MELTING TEMP: 432 F [222 C]  
UL RATING: UL 94 V0  
MAXIMUM RECOMMENDED TORQUE: 96 IN./LBS. [10.8 N/m]  
(10.8 Nm)



**VTE Incorporated**  
5437 Robinson Road, P.O. Box 790  
Pellston, Michigan 49769  
Telephone: 1-800-927-9256, 231-539-8000  
FAX: 231-539-0914

REF:	DATE:	DRN BY:	EJE	WEIGHT:
	09-19-2019	CHK'D BY:	PAK	
TITLE: BMW JUNCTION STUD, NO LOCK WASHER, EXTENDED STUD LENGTH				
MATERIAL:	GLASS FILLED NYLON	PART NO:		
COLOR:	NATURAL	DRG CLASS	REV B	77008X1B15