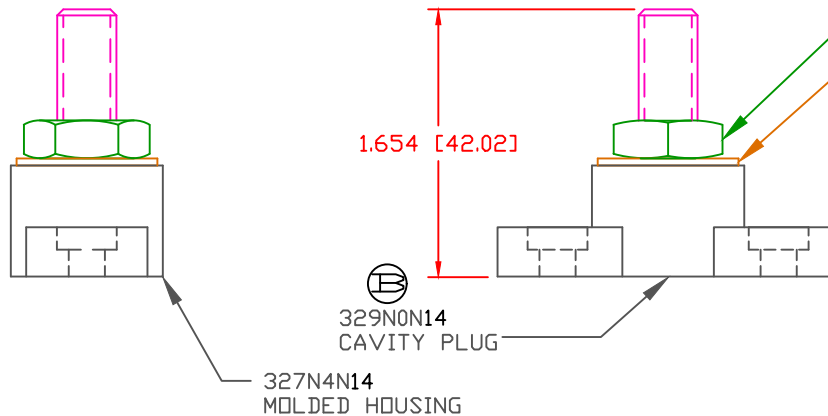
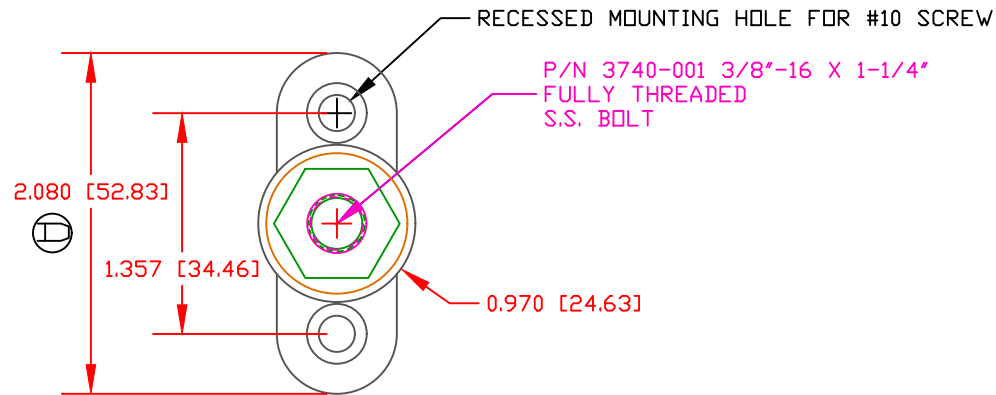


THE INFORMATION CONTAINED IN THIS DRAWING IS THE SOLE PROPERTY OF VTE INCORPORATED. ANY REPRODUCTION IN PART OR WHOLE WITHOUT THE WRITTEN PERMISSION OF VTE INCORPORATED IS PROHIBITED.

LTR.	REVISIONS	DATE	INT.
A	REMOVED OPTIONAL CONSTRUCTION NOTE	4-15-16	RAS
B	PN 329NDV** CHANGED TO 329NDN**	6-23-16	MDL
C	3844-012 WAS 3844-009	11-01-16	JMM
D	UPDATED AND ADDED DIMENSIONS FOR MOUNTING	7-31-17	RAS



P/N 3844-012 3/8"-16  
STAINLESS STEEL HEAVY HEX JAM NUT  
FACTORY ASSEMBLED TO 15 FT./LBS (180 IN./LBS)

P/N 3646-000 3/8" STAINLESS FLAT WASHER

TOLERANCE UNLESS OTHERWISE SPECIFIED:  $\pm 0.30\%$  /  $\pm 0.8\text{mm}$   
RADIAL DIAMETERS TO BE MEASURED OVER MANDRELS,  
RING GAGES OR PIN GAGES OF SUITABLE SIZE

BASE MATERIAL:	GLASS-REINFORCED NYLON
BASE MATERIAL U.L. RATING:	94 HB
DIELECTRIC STRENGTH:	630 VOLTS/MIL PER ASTM D149
CURRENT RATING:	250 AMPS
TEMP. RISE AT LOAD:	46 DEG. F.
RECOMMENDED MAXIMUM TORQUE:	12 FT./LBS. (144 IN./LBS.)

DO NOT SCALE



VTE Incorporated  
5437 Robinson Road, P.O. Box 790  
Pellston, Michigan 49769  
Telephone: 1-800-527-9256, 231-539-8000  
FAX: 231-539-0914

REF:	DATE:	DRN BY:	BRH	WEIGHT:
	09FEB07	CHK'D BY:	BRH	
TITLE: 3/8" SMALL POWER POST ECONOMY VERSION				SCALE: NONE
MATERIAL:			PART NO.	
COLOR: BLACK	DRG CLASS	REV D	77037XN14	