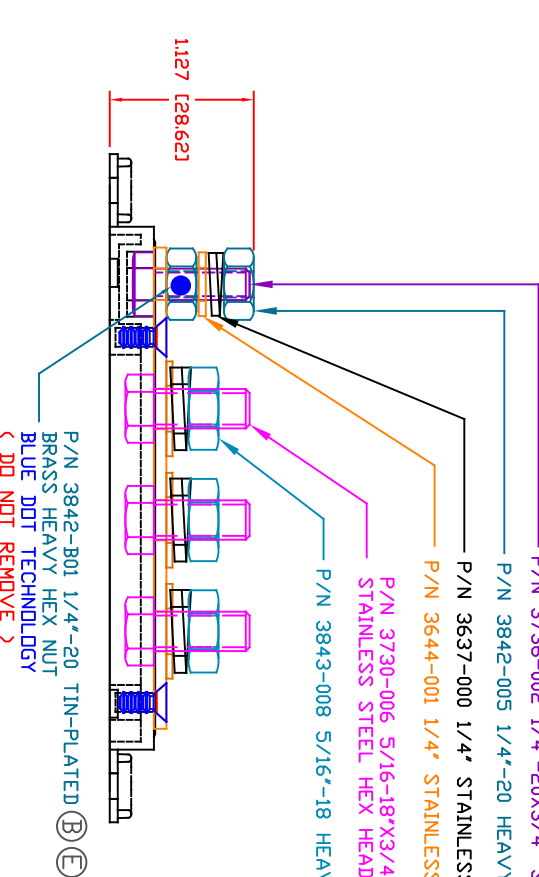
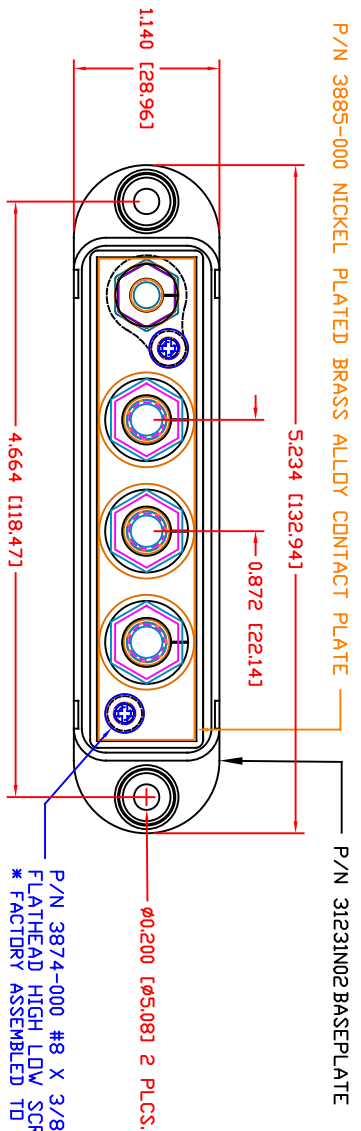


THE INFORMATION CONTAINED IN THIS DRAWING IS THE SOLE PROPERTY OF VTE INCORPORATED. ANY REPRODUCTION IN PART OR WHOLE WITHOUT THE WRITTEN PERMISSION OF VTE INCORPORATED IS PROHIBITED. VTE MAKES NO WARRANTY, EXPRESSED OR IMPLIED, AS TO THE SUITABILITY OF A PRODUCT FOR ANY INTENDED USE. THE CUSTOMER SHALL BEAR THE SOLE RESPONSIBILITY OF DETERMINING THE SUITABILITY OF ANY VTE PRODUCT FOR ITS END USE.

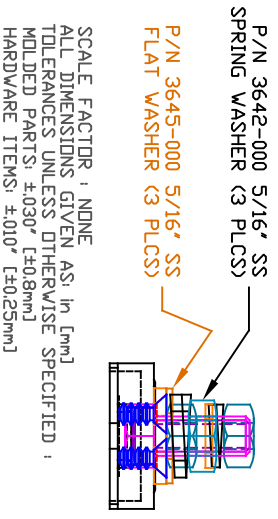


MATERIAL PART NO: 711210502  
 MATERIAL: GLASS FILLED NYLON  
 VENDOR PART NO: HYLON N2015 HL NAT  
 SPECIFIC GRAVITY: 1.23  
 MELTING TEMP: 515 F [268 C]  
 UL RATING: UL 94 HB

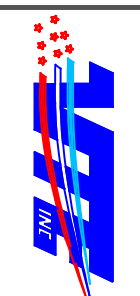
TORQUE:  
 1/4" NUT - MAXIMUM RECOMMENDED TORQUE: 60 IN./LBS. [6.7 Nm]  
 5/16" NUT - MAXIMUM RECOMMENDED TORQUE: 144 IN./LBS. [16.2 Nm]  
 (< ANTI-SEIZE RECOMMENDED >)

INCLUDES P-16808110001 BLUE DDT MULTI LABEL, 1 PER CONTAINER  
 MAXIMUM AMPERAGE: 210 AMPS @12VDC

LTR	REVISIONS	DATE	INT.
A	3874-000 WAS 3872-000	07-12-06	BRH
B	3842-001 WAS 3842-002	08-14-06	BRH
C	REPLACED P/N 3843-002 WITH P/N 3843-008	03-28-16	RAS
D	REPLACED P/N 3842-002 WITH P/N 3842-005	03-28-16	RAS
E	REPLACED P/N 3842-001 WITH P/N 3842-B01	06-14-17	JMM
F	ADDED FACTORY TORQUE SPEC TO 3874-000	05-23-24	RAS
G	REVISED TORQUE SPEC FROM 10 IN./LBS.	11-13-24	RAS



SCALE FACTOR: NONE  
 ALL DIMENSIONS GIVEN AS: IN [mm]  
 TOLERANCES UNLESS OTHERWISE SPECIFIED:  
 MOLDED PARTS: ±0.30" [±0.8mm]  
 HARDWARE ITEMS: ±.010" [±0.25mm]



VTE Incorporated  
 5437 Robinson Road, P.O. Box 790  
 Pellston, Michigan 49769  
 Telephone: 1-800-527-9256, 231-539-8000  
 FAX: 231-539-0914

REF.	DATE:	DRN BY:	BRH	WEIGHT:
CUSTOMER DIMS	02-22-06	CHK'D BY:	BRH	
TITLE:	5/16" 4-POINT CONTACT PLATE			SCALE:
MATERIAL:	GLASS FILLED NYLON			PART NO:
COLOR:	RED	DRG CLASS	REV G	7705N0N02