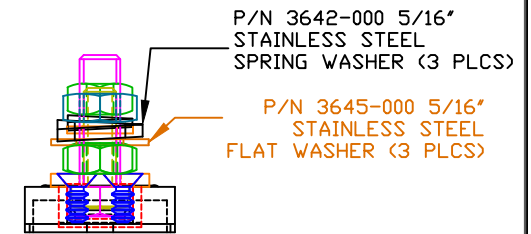
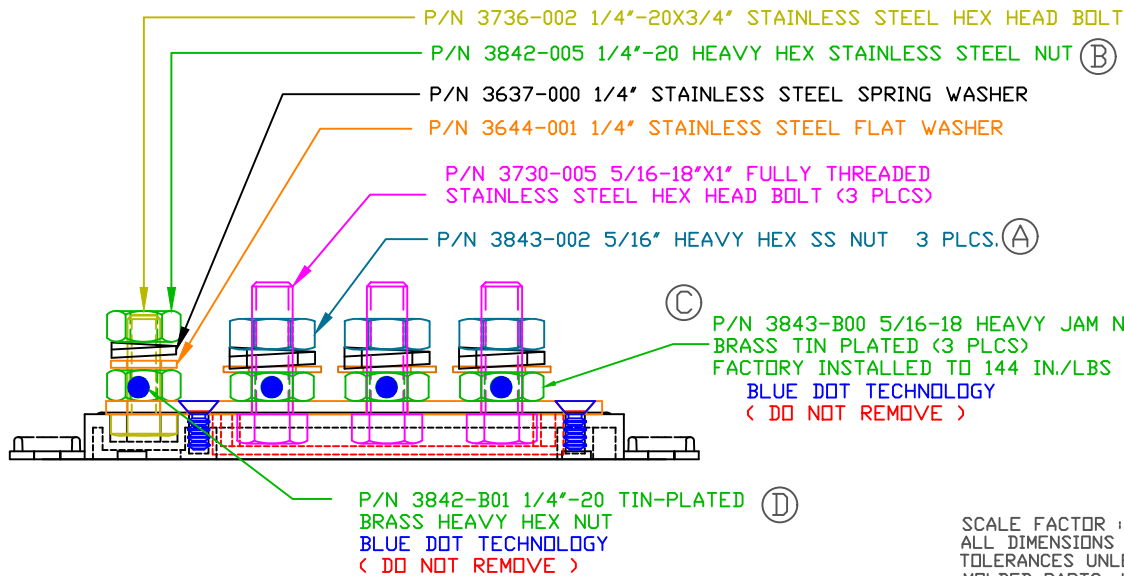
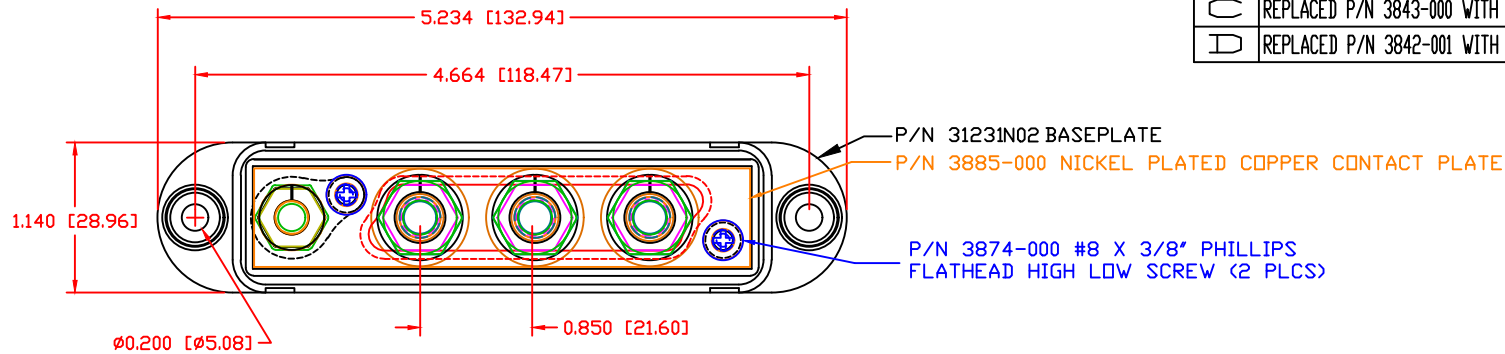


THE INFORMATION CONTAINED IN THIS DRAWING IS THE SOLE PROPERTY OF VTE INCORPORATED. ANY REPRODUCTION IN PART OR WHOLE WITHOUT THE WRITTEN PERMISSION OF VTE INCORPORATED IS PROHIBITED. VTE MAKES NO WARRANTY, EXPRESSED OR IMPLIED, AS TO THE SUITABILITY OF A PRODUCT FOR ANY INTENDED USE. THE CUSTOMER SHALL BEAR THE SOLE RESPONSIBILITY OF DETERMINING THE SUITABILITY OF ANY VTE PRODUCT FOR ITS END USE.

LTR.	REVISIONS	DATE	INT.
A	REPLACED P/N 3843-002 WITH P/N 3843-008	03-28-16	RAS
B	REPLACED P/N 3842-002 WITH P/N 3842-005	03-28-16	RAS
C	REPLACED P/N 3843-000 WITH P/N 3843-B00	06-05-17	JMM
D	REPLACED P/N 3842-001 WITH P/N 3842-B01	06-14-17	JMM




SCALE FACTOR : NONE
 ALL DIMENSIONS GIVEN AS: in [mm]
 TOLERANCES UNLESS OTHERWISE SPECIFIED :
 MOLDED PARTS: ±0.30" [±0.8mm]
 HARDWARE ITEMS: ±0.10" [±0.25mm]

MATERIAL PART NO: 7111210502
 MATERIAL: GLASS FILLED NYLON
 VENDOR PART NO: HYLON N2015 HL NAT
 SPECIFIC GRAVITY: 1.23
 MELTING TEMP: 515 F [268 C]
 U.L. RATING: UL 94 HB

TORQUE:
 1/4" NUT - MAXIMUM RECOMMENDED TORQUE: 60 IN./LBS.
 5/16" NUT - MAXIMUM RECOMMENDED TORQUE: 144 IN./LBS.
 (ANTI-SEIZE RECOMMENDED)

INCLUDES P-16808110001 BLUE DOT MULTI LABEL, 1 PER CONTAINER
 MAXIMUM AMPERAGE: 210 AMPS @12VDC



VTE Incorporated
 5437 Robinson Road, P.O. Box 790
 Pellston, Michigan 49769
 Telephone: 1-800-527-9256, 231-539-8000
 FAX: 231-539-0914

REF:	DATE:	DRN BY: BRH	WEIGHT:
CUSTOMER DIMS	03-02-10	CHK'D BY: BRH	
TITLE: 5/16" 4-POINT CONTACT PLATE			SCALE:
MATERIAL:		PART NO.	
COLOR: RED	DRG CLASS REV D	7705X0N02	