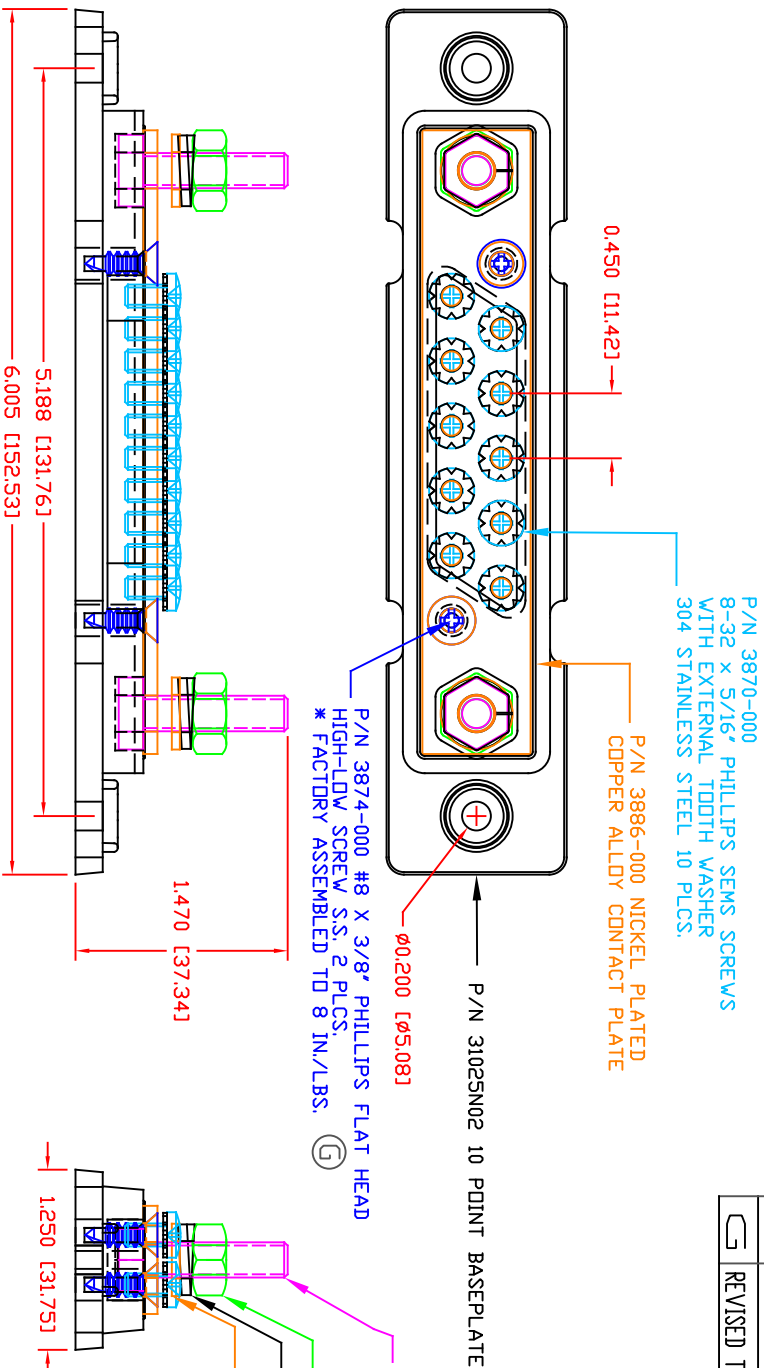


THE INFORMATION CONTAINED IN THIS DRAWING IS THE SOLE PROPERTY OF VTE INCORPORATED. ANY REPRODUCTION IN PART OR WHOLE WITHOUT THE WRITTEN PERMISSION OF VTE INCORPORATED IS PROHIBITED.VTE MAKES NO WARRANTY, EXPRESSED OR IMPLIED, AS TO THE SUITABILITY OF A PRODUCT FOR ANY INTENDED USE. THE CUSTOMER SHALL BEAR THE SOLE RESPONSIBILITY OF DETERMINING THE SUITABILITY OF ANY VTE PRODUCT FOR ITS END USE.

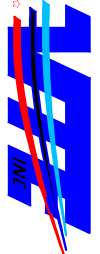
LTR.	REVISIONS	DATE	INT.
△	ADDED TORQUE SPECIFICATION	01-21-14	BRH
▯	ADDED SUB-ASSEMBLY NOTE	02-23-15	BRH
○	REMOVED SUB-ASSEMBLY NOTE P/N 73886	02-04-16	RAS
▷	REPLACED P/N 3842-002 WITH P/N 3842-005	03-29-16	RAS
≡	UPDATED ELECTRICAL VALUES	01-03-17	RAS
⊢	ADDED FACTORY TORQUE SPEC TO 3874-000	5-23-24	RAS
⊢	REVISED TORQUE SPEC FROM 10 IN./LBS.	11-13-24	RAS



SCALE FACTOR : NONE
ALL DIMENSIONS GIVEN AS: In [mm]
TOLERANCES UNLESS OTHERWISE SPECIFIED :
MOLDED PARTS: ±.030" [±0.8mm]
HARDWARE ITEMS: ±.010" [±0.25mm]

MATERIAL PART NO: 7111210502
MATERIAL: GLASS FILLED NYLON
VENDOR PART NO: HYLON N2015 HL NAT
SPECIFIC GRAVITY: 1.23
MELTING TEMP: 515 F [268 C]
UL RATING: UL 94 HB

#8 SCREWS FACTORY INSTALLED TO 15 IN.-LBS
MAXIMUM RECOMMENDED AMPERAGE: 150 A @12VDC (20A X 10 PLCS)
MAXIMUM RECOMMENDED VOLTAGE: 48VDC



VTE Incorporated
5437 Robinson Road, P.O. Box 790
Pellston, Michigan 49769
Telephone: 1-800-527-9256, 231-539-8000
FAX: 231-539-0914

REF:	DATE:	DRN BY:	BRH	WEIGHT:
CUSTOMER DIMS	09-11-06	CHK'D BY:	BRH	
TITLE: 10 POINT BUS STRIP WITH 2-1/4" POSTS		SCALE:		
MATERIAL: GLASS FILLED NYLON		PART NO:		
COLOR: RED	DRG CLASS	771025N0N02		