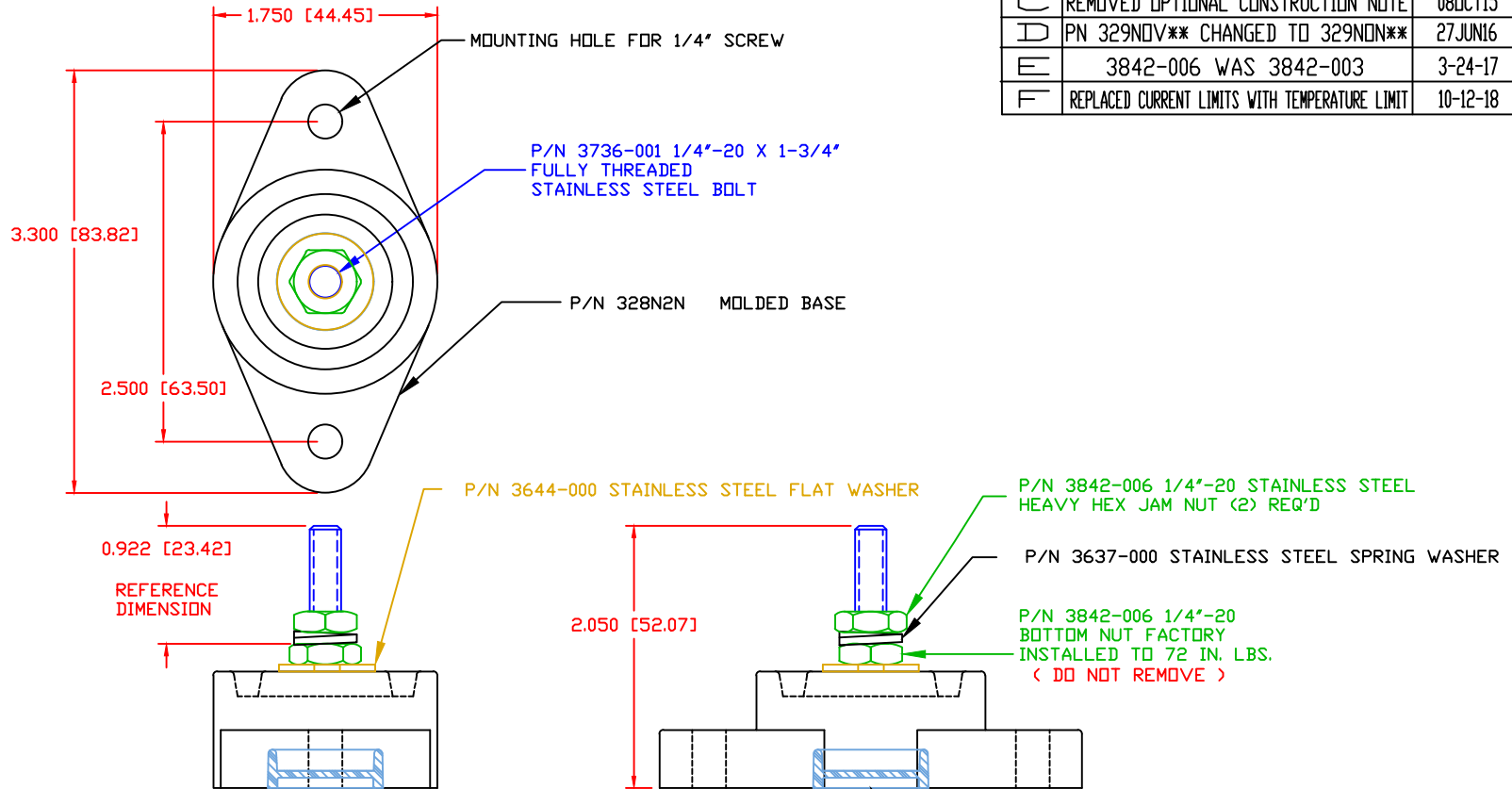


THE INFORMATION CONTAINED IN THIS DRAWING IS THE SOLE PROPERTY OF VTE INCORPORATED. ANY REPRODUCTION IN PART OR WHOLE WITHOUT THE WRITTEN PERMISSION OF VTE INCORPORATED IS PROHIBITED. VTE MAKES NO WARRANTY, EXPRESSED OR IMPLIED, AS TO THE SUITABILITY OF A PRODUCT FOR ANY INTENDED USE. THE CUSTOMER SHALL BEAR THE SOLE RESPONSIBILITY OF DETERMINING THE SUITABILITY OF ANY VTE PRODUCT FOR ITS END USE.

LTR.	REVISIONS	DATE	INT.
A	3842-003 WAS 3842	19MAY05	BRH
B	ADDED OPTIONAL CONSTRUCTION NOTE AND COMPONENT P/N SUFFIXES	05APR06	BRH
C	REMOVED OPTIONAL CONSTRUCTION NOTE	08OCT15	RAS
D	PN 329NOV** CHANGED TO 329NON**	27JUN16	MDL
E	3842-006 WAS 3842-003	3-24-17	JMM
F	REPLACED CURRENT LIMITS WITH TEMPERATURE LIMIT	10-12-18	RAS



P/N 329NON CAVITY PLUG (NOT SHOWN)


SCALE FACTOR : NONE
 ALL DIMENSIONS GIVEN AS: in [mm]
 TOLERANCES UNLESS OTHERWISE SPECIFIED :
 MOLDED PARTS: ±.030" [±0.8mm]
 HARDWARE ITEMS: ±.010" [±0.25mm]

MATERIAL PART NO:
 MATERIAL:
 VENDOR PART NO:
 SPECIFIC GRAVITY:
 MELTING TEMP:
 U.L. RATING:

7111210502
 GLASS FILLED NYLON
 NYLON N2015 HL NAT
 1.23
 515 F [268 C]
 UL 94 HB

OVERALL ASSEMBLY TEMPERATURE NOT TO EXCEED 140 DEGREES F
 (60 DEGREES C)

MAXIMUM RECOMMENDED TORQUE: 60 IN./LBS.

		VTE Incorporated 5437 Robinson Road, P.O. Box 790 Pellston, Michigan 49769 Telephone: 1-800-527-9256, 231-539-8000 FAX: 231-539-0914	
		REF: CUSTOMER DIMS	DATE: 4-09-03
TITLE: 1/4" POWER DISTRIBUTION POST		CHK'D BY: BRH	
MATERIAL: GLASS FILLED NYLON	PART NO.		
COLOR: RED	DRG CLASS: REV F	77125N02	