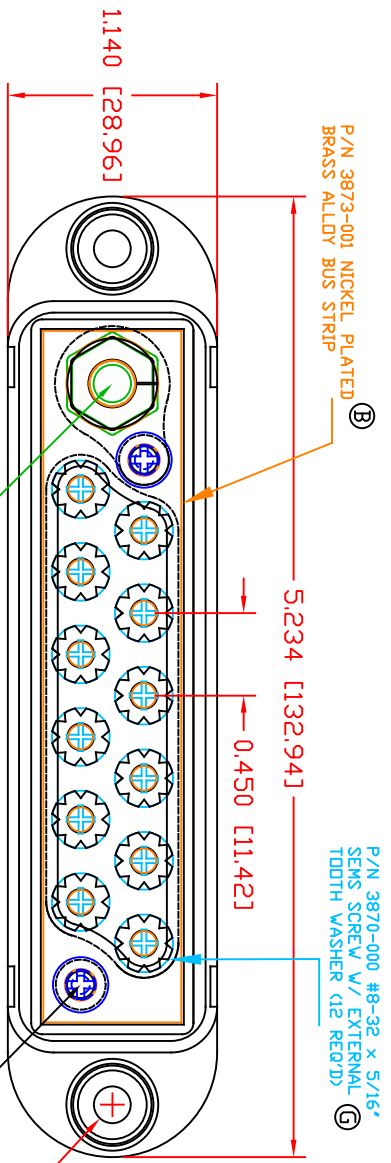
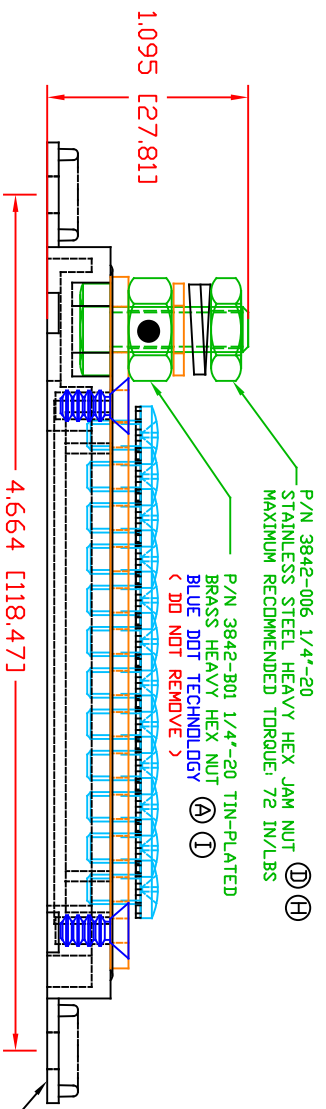


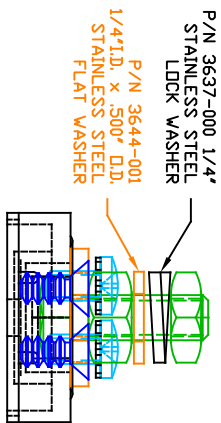
THE INFORMATION CONTAINED IN THIS DRAWING IS THE SOLE PROPERTY OF VTE INCORPORATED. ANY REPRODUCTION IN PART OR WHOLE WITHOUT THE WRITTEN PERMISSION OF VTE INCORPORATED IS PROHIBITED. VTE MAKES NO WARRANTY, EXPRESSED OR IMPLIED, AS TO THE SUITABILITY OF A PRODUCT FOR ANY INTENDED USE. THE CUSTOMER SHALL BEAR THE SOLE RESPONSIBILITY OF DETERMINING THE SUITABILITY OF ANY VTE PRODUCT FOR ITS END USE.



LTR	REVISIONS	DATE	INT.
A	3842-001 WAS 3842-002	08-14-06	BRH
B	3874-000 WAS 3872, 3873-001 WAS 3873	10-05-06	BRH
C	ADDED 73873-001 SUB-ASSEMBLY	10-11-06	BRH
D	3842-003 WAS 3842-002	08-22-07	BRH
E	ADDED TORQUE SPECIFICATION	01-21-14	BRH
F	REVISED SUB-ASSEMBLY NOTE P/N 73873-001	02-02-16	RAS
G	UPDATED TORQUE SPEC	08-09-16	MDL
H	3842-003 UPDATED TO 3842-006	03-21-17	RAS
I	3842-B01 WAS 3842-001	06-14-17	JMM
J	ADDED FACTORY TORQUE SPEC TO 3874-000	5-23-24	RAS
K	REVISED TORQUE SPEC FROM 10 IN./LBS.	11-13-24	RAS



P/N 31225N02
MOLDED BASE



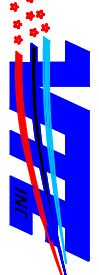
P/N 3874-000 #8x3/8\"/>

MATERIAL PART NO: 711210502
 MATERIAL: GLASS FILLED NYLON
 VENDOR PART NO: HYLON N2015 HL NAT
 SPECIFIC GRAVITY: 1.23
 MELTING TEMP: 515 F [268 C]
 UL RATING: UL 94 HB

INCLUDES P-16808110001 BLUE DDT MULTI LABEL, 1 PER CONTAINER

TESTED AT 240 AMPS @ 12VDC FOR 30 MINUTES, MAXIMUM TEMPERATURE RISE WAS 7.8 DEG. C. MAXIMUM TEMPERATURE RECORDED WAS 30.6 DEG. C.

SCALE FACTOR: NONE
 ALL DIMENSIONS GIVEN AS: IN [mm]
 TOLERANCES UNLESS OTHERWISE SPECIFIED:
 MOLDED PARTS: ±0.30" [±0.8mm]
 HARDWARE ITEMS: ±0.10" [±0.25mm]



VTE Incorporated
 5437 Robinson Road, P.O. Box 790
 Pellston, Michigan 49769
 Telephone: 1-800-527-9256, 231-539-8000
 FAX: 231-539-0914

REF:	DATE:	DRN BY:	BRH	WEIGHT:
CUSTOMER DIMS	08-22-05	CHK'D BY:	BRH	
TITLE: 12-PINT TERMINAL STRIP		SCALE:		
MATERIAL: GLASS FILLED NYLON		PART NO: 7712N0N02		
COLOR: RED	DRG CLASS	REV K		