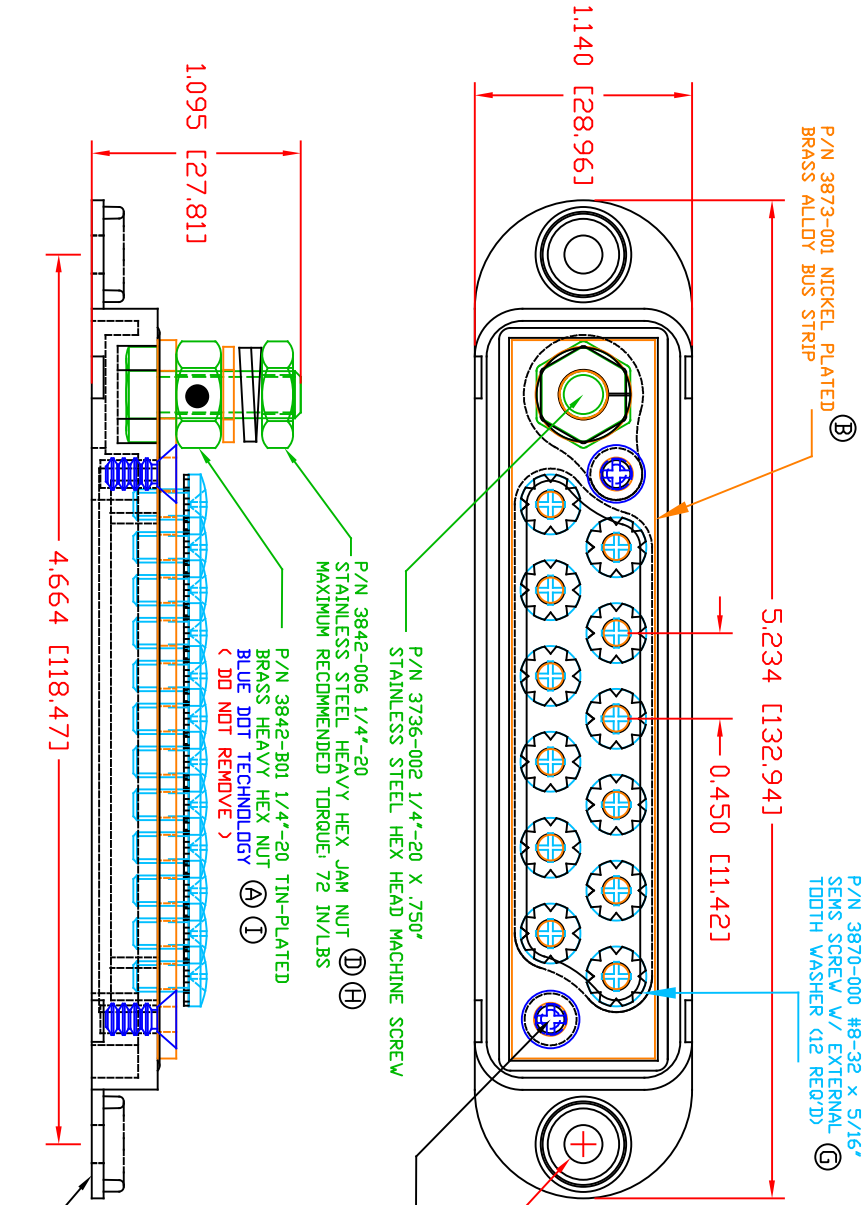


THE INFORMATION CONTAINED IN THIS DRAWING IS THE SOLE PROPERTY OF VTE INCORPORATED. ANY REPRODUCTION IN PART OR WHOLE WITHOUT THE WRITTEN PERMISSION OF VTE INCORPORATED IS PROHIBITED. VTE MAKES NO WARRANTY, EXPRESSED OR IMPLIED, AS TO THE SUITABILITY OF A PRODUCT FOR ANY INTENDED USE. THE CUSTOMER SHALL BEAR THE SOLE RESPONSIBILITY OF DETERMINING THE SUITABILITY OF ANY VTE PRODUCT FOR ITS END USE.



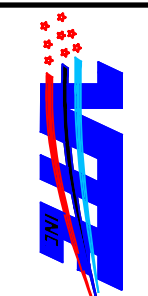
LT#	REVISIONS	DATE	INT.
A	3842-001 WAS 3842-002	08-14-06	BRH
B	3874-000 WAS 3872, 3873-001 WAS 3873	10-05-06	BRH
C	ADDED 73873-001 SUB-ASSEMBLY	10-11-06	BRH
D	3842-003 WAS 3842-002	08-22-07	BRH
E	ADDED TORQUE SPECIFICATION	01-21-14	BRH
F	REMOVED SUB-ASSEMBLY NOTE P/N 73873-001	02-02-16	RAS
G	UPDATED TORQUE SPEC	08-09-16	MDL
H	3842-003 UPDATED TO 3842-006	03-21-17	RAS
I	3842-B01 WAS 3842-001	06-14-17	JMM
J	ADDED FACTORY TORQUE SPEC TO 3874-000	5-23-24	RAS
K	REVISED TORQUE SPEC FROM 10 IN./LBS.	11-13-24	RAS

MATERIAL PART NO:
MATERIAL:
VENDOR PART NO:
SPECIFIC GRAVITY:
MELTING TEMP:
U.L. RATING:

1111210514UL
GLASS FILLED NYLON
HYLON N2015 HL BK
1.23
515 F [268 C]
UL 94 HB

INCLUDES P-16808110001 BLUE DDT MULTI LABEL, 1 PER CONTAINER
TESTED AT 240 AMPS @ 12VDC FOR 30 MINUTES, MAXIMUM
TEMPERATURE RISE WAS 7.8 DEG. C. MAXIMUM
TEMPERATURE RECORDED WAS 30.6 DEG. C.

SCALE FACTOR: NONE
ALL DIMENSIONS GIVEN AS: In [mm]
TOLERANCES UNLESS OTHERWISE SPECIFIED:
MOLDED PARTS: ± 0.030 [$\pm 0.8mm$]
HARDWARE ITEMS: ± 0.010 [$\pm 0.25mm$]



VTE Incorporated
5437 Robinson Road, P.O. Box 790
Pellston, Michigan 49769
Telephone: 1-800-527-9256, 231-539-8000
FAX: 231-539-0914

REF:	DATE:	DRN BY:	BRH	WEIGHT:
CUSTOMER DIMS	08-22-05	CHK'D BY:	BRH	
TITLE:	12-POINT TERMINAL STRIP		SCALE:	
MATERIAL: GLASS FILLED NYLON	PART NO:		7712N0N14	
COLOR: BLACK	DRG CLASS	REV	K	