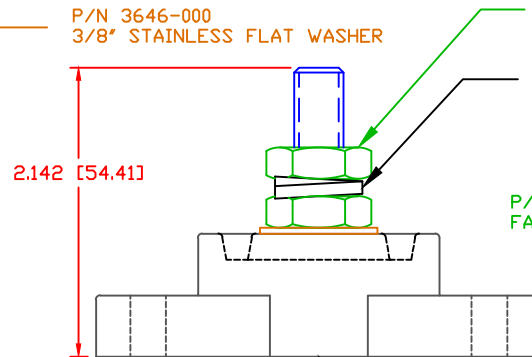
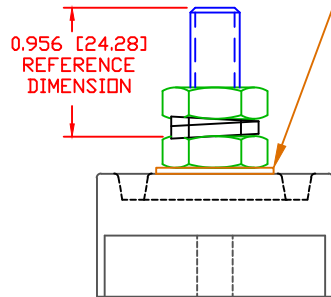
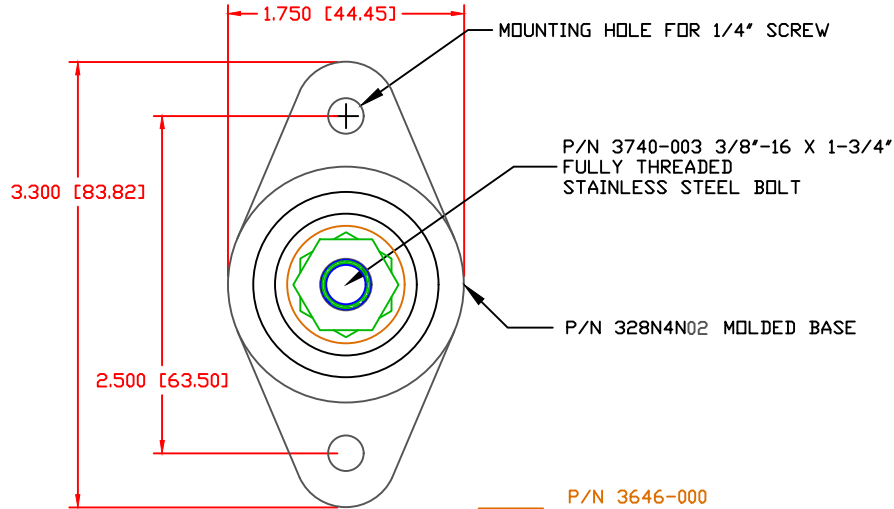


THE INFORMATION CONTAINED IN THIS DRAWING IS THE SOLE PROPERTY OF VTE INCORPORATED. ANY REPRODUCTION IN PART OR WHOLE WITHOUT THE WRITTEN PERMISSION OF VTE INCORPORATED IS PROHIBITED. VTE MAKES NO WARRANTY, EXPRESSED OR IMPLIED, AS TO THE SUITABILITY OF A PRODUCT FOR ANY INTENDED USE. THE CUSTOMER SHALL BEAR THE SOLE RESPONSIBILITY OF DETERMINING THE SUITABILITY OF ANY VTE PRODUCT FOR ITS END USE.

LTR.	REVISIONS	DATE	INT.
A	3844-002 WAS 3844	18MAY05	BRH
B	ADDED OPTIONAL CONSTRUCTION NOTE AND -000 SUFFIXES	04APR06	BRH
C	UPDATED ELECTRICAL PERFORMANCE NOTES	12MAR07	BRH
D	REMOVED OPTIONAL CONSTRUCTION NOTE	08OCT15	RAS
E	REPLACED P/N 3844-003 WITH P/N 3844-009	14APR16	RAS
F	PN 329NOV** CHANGED TO 329NON**	27JUN16	MDL
G	3844-012 WAS 3844-003	11-01-16	JMM
H	REPLACED CURRENT LIMITS WITH TEMPERATURE LIMIT	10-12-18	RAS



ⓓ ⓔ ⓖ

P/N 3844-012 3/8"-16 STAINLESS STEEL HEAVY HEX JAM NUT (2) REQ'D

P/N 3638-000 STAINLESS STEEL SPRING WASHER

P/N 3844-012 3/8"-16 NUT  
FACTORY ASSEMBLED TO 15 FT./LBS (180 IN./LBS)  
( DO NOT REMOVE )

P/N 329NON02 CAVITY PLUG (NOT SHOWN)

ⓕ


SCALE FACTOR : NONE  
ALL DIMENSIONS GIVEN AS: in [mm]  
TOLERANCES UNLESS OTHERWISE SPECIFIED :  
MOLDED PARTS: ±.030" [±0.8mm]  
HARDWARE ITEMS: ±.010" [±0.25mm]

MATERIAL PART NO:  
MATERIAL:  
VENDOR PART NO:  
SPECIFIC GRAVITY:  
MELTING TEMP:  
U.L. RATING:

7111210502  
GLASS FILLED NYLON  
NYLON N2015 HL NAT  
1.23  
515 F [268 C]  
UL 94 HB

ⓗ OVERALL ASSEMBLY TEMPERATURE NOT TO EXCEED 140 DEGREES F  
( 60 DEGREES C )

RECOMMENDED MAXIMUM TORQUE: 12 FT./LBS. (144 IN./LBS.)



VTE Incorporated  
5437 Robinson Road, P.O. Box 790  
Pellston, Michigan 49769  
Telephone: 1-800-527-9256, 231-539-8000  
FAX: 231-539-0914

REF:	DATE:	DRN BY:	BRH	WEIGHT:
CUSTOMER DIMS	4-09-03	CHK'D BY:	BRH	.21 LBS. / 95.2 G.
TITLE:		3/8" POWER DISTRIBUTION STUD		
MATERIAL:	GLASS FILLED NYLON	PART NO.		77137N02
COLOR:	RED	DRG CLASS	REV H	