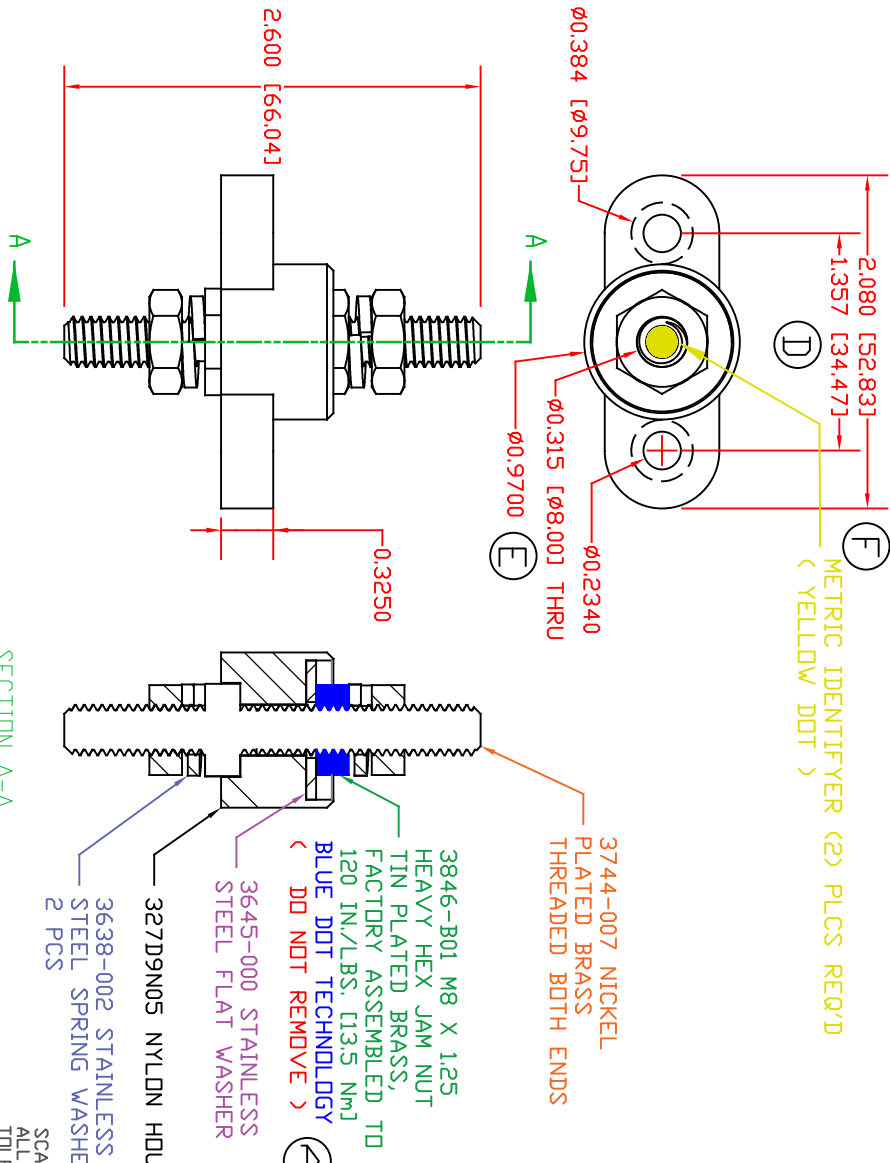
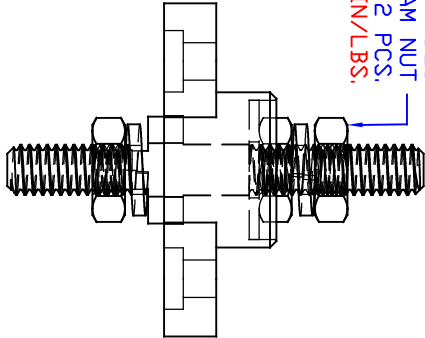


THE INFORMATION CONTAINED IN THIS DRAWING IS THE SOLE PROPERTY OF VTE INCORPORATED. ANY REPRODUCTION IN PART OR WHOLE WITHOUT THE WRITTEN PERMISSION OF VTE INCORPORATED IS PROHIBITED. VTE MAKES NO WARRANTY, EXPRESSED OR IMPLIED, AS TO THE SUITABILITY OF A PRODUCT FOR ANY INTENDED USE. THE CUSTOMER SHALL BEAR THE SOLE RESPONSIBILITY OF DETERMINING THE SUITABILITY OF ANY VTE PRODUCT FOR ITS END USE.



LTR	REVISIONS	DATE	INT.
A	REVISED PART# 3646-001 TO PART# 3846-001	3-15-17	RAS
B	UPDATED PART NUMBER FROM 327D9N	4-27-17	RAS
C	UPDATED PART NUMBER FROM 3846-001	6-01-17	RAS
D	UPDATED DIMENSION FROM 1.314	7-27-17	RAS
E	UPDATED DIMENSION FROM .990	7-27-17	RAS
F	UPDATED DIMENSION FROM 2.054	7-27-17	RAS
G	UPDATED MATERIAL PART #	9-08-17	RAS
H	ADDED ELECTRICAL VALUES	6-21-19	RAS
I	UPDATED TORQUE VALUES	07-01-20	EJE
J	UPDATED BASE P/N FROM 327D5	8-23-21	RAS
K	UPDATED ELECTRICAL VALUES	10-18-22	RAS
L	327D5 WAS 327D9	6-03-24	RAS
M	REPLACED 3744-003 WITH 3744-007	8-2-24	RAS
N	REPLACED 327D5 WITH 327D9	8-12-24	RAS


3846-003 M8 X 1.25  
HEAVY HEX JAM NUT  
STAINLESS STEEL, 2 PCS.  
< MAX TORQUE 102 IN./LBS.  
[11.5 Nm] >



INCLUDES P-1680810001 BLUE DOT MULTI LABEL, 1 PER CONTAINER

MATERIAL PART NO: 7111210505  
MATERIAL: GLASS FILLED NYLON  
VENDOR PART NO: HYLON N2015 HL NAT  
SPECIFIC GRAVITY: 1.23  
MELTING TEMP: 515 F [268 C]  
UL RATING: UL 94 HB

CURRENT CARRYING CAPACITY: (325 AMP @ 12VDC)



VTE Incorporated  
5437 Robinson Road, P.O. Box 790  
Pellston, Michigan 49769  
Telephone: 1-800-527-9256, 231-539-8000  
FAX: 231-539-0914

REF:	DATE: 8-27-21	DRN BY: RAS	WEIGHT:
TITLE: M8 PASSTHROUGH JUNCTION STUD		CHK'D BY: PJK	
MATERIAL: GLASS FILLED NYLON		PART NO:	
COLOR: YELLOW	DRG CLASS: REV N	77208N05	