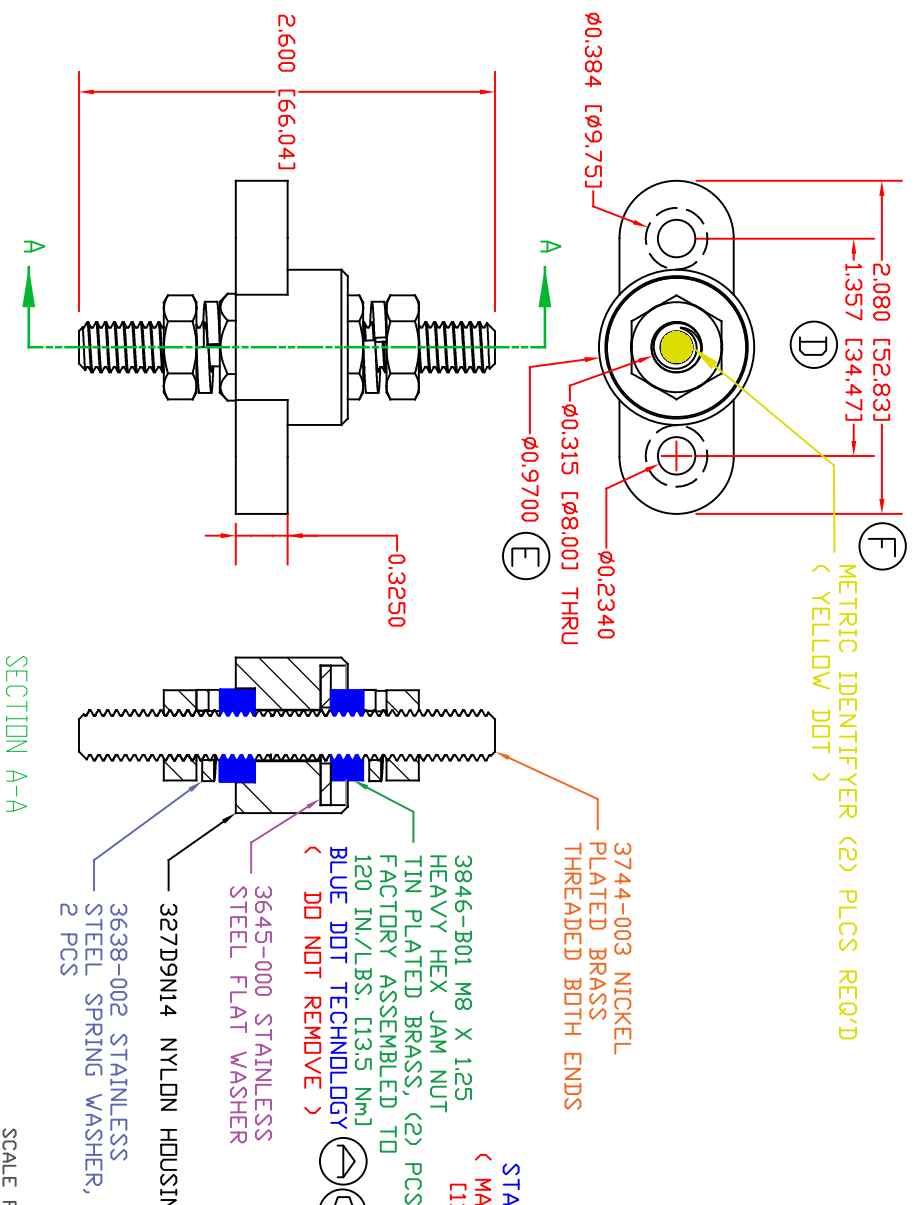
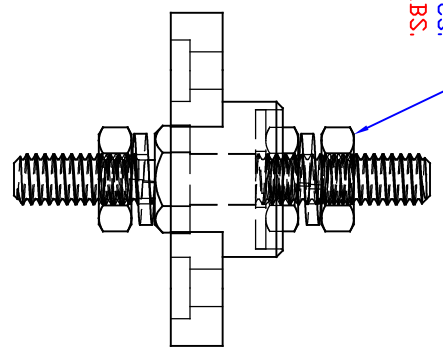


THE INFORMATION CONTAINED IN THIS DRAWING IS THE SOLE PROPERTY OF VTE INCORPORATED. ANY REPRODUCTION IN PART OR WHOLE WITHOUT THE WRITTEN PERMISSION OF VTE INCORPORATED IS PROHIBITED. VTE MAKES NO WARRANTY, EXPRESSED OR IMPLIED, AS TO THE SUITABILITY OF A PRODUCT FOR ANY INTENDED USE. THE CUSTOMER SHALL BEAR THE SOLE RESPONSIBILITY OF DETERMINING THE SUITABILITY OF ANY VTE PRODUCT FOR ITS END USE.



LTR	REVISIONS	DATE	INT.
A	REVISED PART# 3646-001 TO PART# 3846-001	3-15-17	RAS
B	UPDATED PART NUMBER FROM 327D3N	4-27-17	RAS
C	UPDATED PART NUMBER FROM 3846-001	6-01-17	RAS
D	UPDATED DIMENSION FROM 1.314	7-27-17	RAS
E	UPDATED DIMENSION FROM .990	7-27-17	RAS
F	UPDATED DIMENSION FROM 2.054	7-27-17	RAS
G	UPDATED MATERIAL PART #	9-08-17	RAS
H	ADDED ELECTRICAL VALUES	6-21-19	RAS
I	UPDATED TORQUE VALUES	07-01-20	EJE
J	UPDATED BASE P/N FROM 327D5	8-23-21	RAS
K	UPDATED ELECTRICAL VALUES	10-18-22	RAS



INCLUDES P-16808110001 BLUE DOT MULTI LABEL, 1 PER CONTAINER

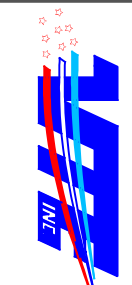
MATERIAL PART NO:
MATERIAL:
VENDOR PART NO:
SPECIFIC GRAVITY:
MELTING TEMP:
UL RATING:

111210514UL
GLASS FILLED NYLON
HYLON N2015 HL BK
1.23
515 F [268 C]
UL 94 HB

CURRENT CARRYING CAPACITY:

(325 AMP @ 12VDC)

SCALE FACTOR : NONE
ALL DIMENSIONS GIVEN AS: mm [in]
TOLERANCES UNLESS OTHERWISE SPECIFIED :
MOLDED PARTS: ±0.30° [±0.8mm]
HARDWARE ITEMS: ±.010° [±0.25mm]



VTE Incorporated
5437 Robinson Road, P.O. Box 790
Pellston, Michigan 49769
Telephone: 1-800-527-9256, 231-539-8000
FAX: 231-539-0914

REF:	DATE:	DRN BY:	RAS	WEIGHT:
	8-27-21	CHK'D BY:	PJK	
TITLE: M8 PASSTHROUGH JUNCTION STUD				
MATERIAL: GLASS FILLED NYLON		PART NO. 77208N14		
COLOR: BLACK	DRG CLASS	REV	K	