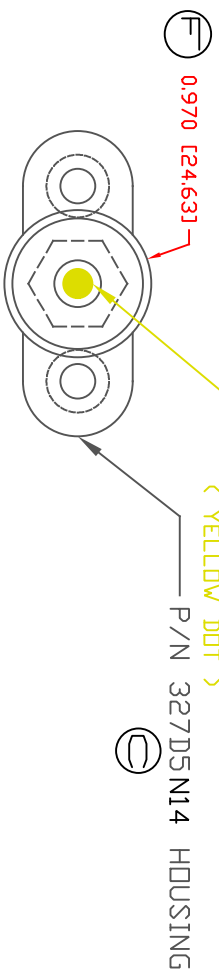
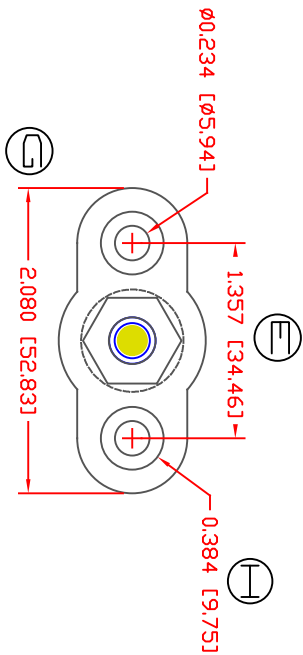
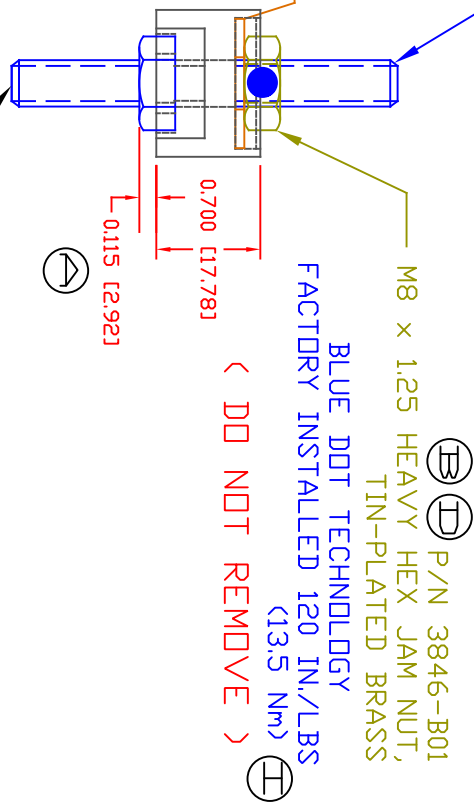
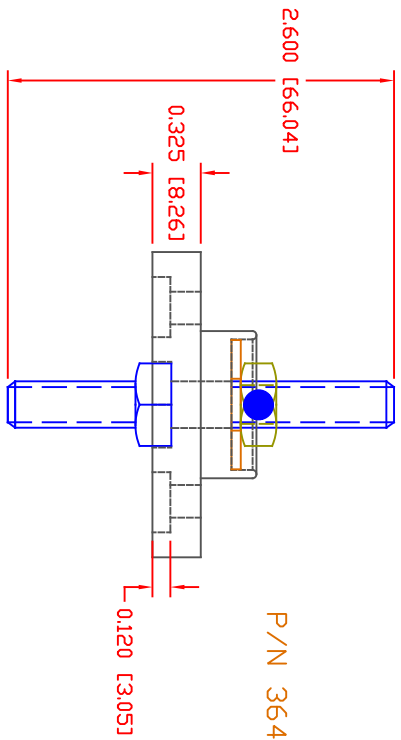


THE INFORMATION CONTAINED IN THIS DRAWING IS THE SOLE PROPERTY OF VTE INCORPORATED. ANY REPRODUCTION IN PART OR WHOLE WITHOUT THE WRITTEN PERMISSION OF VTE INCORPORATED IS PROHIBITED.VTE MAKES NO WARRANTY, EXPRESSED OR IMPLIED, AS TO THE SUITABILITY OF A PRODUCT FOR ANY INTENDED USE. THE CUSTOMER SHALL BEAR THE SOLE RESPONSIBILITY OF DETERMINING THE SUITABILITY OF ANY VTE PRODUCT FOR ITS END USE.



P/N 3744-007 M8 x 1.25 STUD,
DOUBLE ENDED BRASS NICKEL PLATED




INCLUDES P-16808110001 BLUE DOT MULTI LABEL, 1 PER CONTAINER

MATERIAL PART NO: 111210514UL
MATERIAL: GLASS FILLED NYLON
VENDOR PART NO: NYLON N2015 HL BK
SPECIFIC GRAVITY: 1.23
MELTING TEMP: 515 F [268 C]
U.L. RATING: UL 94 HB
FOR TERMINAL FASTENERS : 102 IN./LBS. (11.5 Nm)
(NOT INCLUDED)

LR.	REVISIONS	DATE	INT.
A	REVISED FROM 0.09 [2.29]	3-14-17	RAS
B	UPDATED 3846-001 INFORMATION	3-14-17	RAS
C	UPDATED PART NUMBER FROM 327D3N14	04-27-17	RAS
D	UPDATED PART NUMBER FROM 3846-001	06-01-17	RAS
E	UPDATED DIMENSION FROM 1.314	7-27-17	RAS
F	UPDATED DIMENSION FROM .990	7-27-17	RAS
G	UPDATED DIMENSION FROM 2.054	7-27-17	RAS
H	UPDATED DIMENSION FROM .421	7-27-17	RAS
I	TORQUE VALUES CHANGED	7-06-20	EJE
J	REPLACED 3744-003 WITH 3744-007	8-12-24	RAS

SCALE FACTOR : NONE
ALL DIMENSIONS GIVEN AS: In [mm]
TOLERANCES UNLESS OTHERWISE SPECIFIED :
MOLDED PARTS: ±.030" [±0.8mm]
HARDWARE ITEMS: ±.010" [±0.25mm]



VTE Incorporated
5437 Robinson Road, P.O. Box 790
Pellston, Michigan 49769
Telephone: 1-800-527-9256, 231-539-8000
FAX: 231-539-0914

REF.	DATE:	DRN BY:	RAS	WEIGHT:
CUSTOMER	09MAR17	CHK'D BY:	RAS	
TITLE: M8 PASSTHROUGH STUD SPECIAL FOR CRYSTAL RUGGED				
MATERIAL: GLASS FILLED NYLON		PART NO: 77208XN14		
COLOR: BLACK		DRG CLASS REV J		