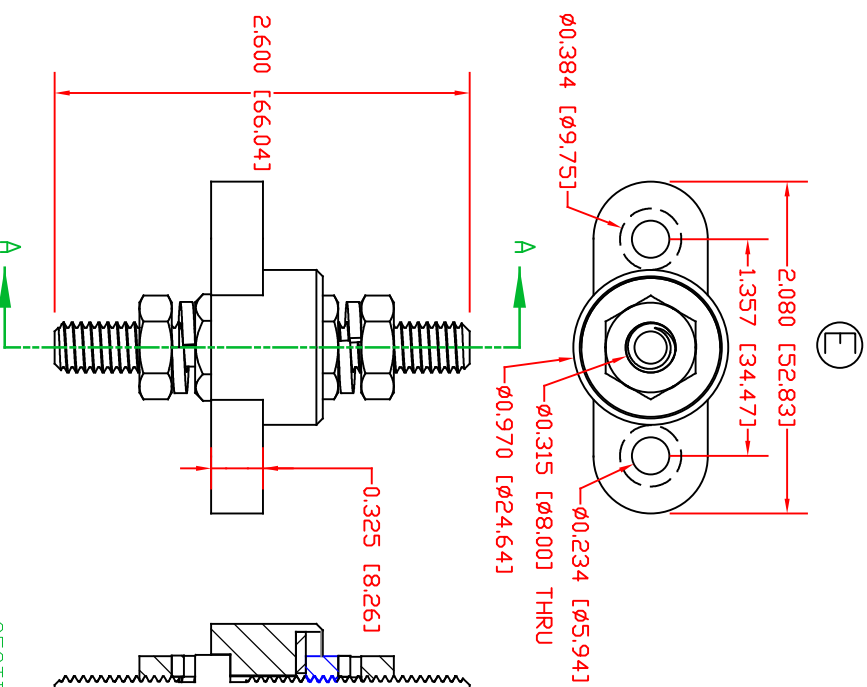
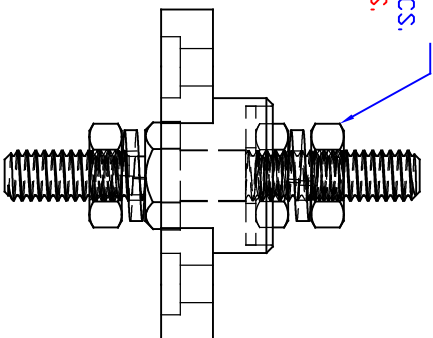


THE INFORMATION CONTAINED IN THIS DRAWING IS THE SOLE PROPERTY OF VTE INCORPORATED. ANY REPRODUCTION IN PART OR WHOLE WITHOUT THE WRITTEN PERMISSION OF VTE INCORPORATED IS PROHIBITED. VTE MAKES NO WARRANTY, EXPRESSED OR IMPLIED, AS TO THE SUITABILITY OF A PRODUCT FOR ANY INTENDED USE. THE CUSTOMER SHALL BEAR THE SOLE RESPONSIBILITY OF DETERMINING THE SUITABILITY OF ANY VTE PRODUCT FOR ITS END USE.



SECTION A-A

- 3744-009 NICKEL PLATED BRASS THREADED BOTH ENDS
- 3843-B00 5/16-18 HEAVY HEX JAM NUT TIN PLATED BRASS FACTORY ASSEMBLED TO 96 IN./LBS. [108 Nm] **BLUE DOT TECHNOLOGY < DO NOT REMOVE >**
- 3645-000 STAINLESS STEEL FLAT WASHER
- 327D6N09 NYLON HOUSING
- 3642-000 STAINLESS STEEL SPRING WASHER, 2 PCS




LR	REVISIONS	DATE	INT.
A	REDRAWN AND REDESIGNED	12-28-07	BRH
B	ADDED FACTORY TORQUE NOTE	2-14-12	BRH
C	REPLACED P/N 3843-001 WITH P/N 3843-009	1-16-17	RAS
D	3843-B00 WAS 3843-000	6-13-17	JMM
E	UPDATED AND ADDED DIMENSIONS FOR MOUNTING	7-31-17	RAS
F	ADDED ELECTRICAL VALUES	10-25-18	RAS
G	UPDATED BASE PART NUMBER FROM 327D3	8-12-21	RAS
H	UPDATED CORE PART NUMBER FROM 3744-000	8-12-21	RAS
I	UPDATED TORQUE VALUE FROM 132 IN./LBS. [14.9 Nm]	8-12-21	RAS
J	UPDATED TORQUE VALUE FROM 112 IN./LBS. [12.65 Nm]	8-12-21	RAS
K	UPDATED ELECTRICAL VALUES	10-18-22	RAS

INCLUDES P-16808110001 BLUE DOT MULTI LABEL, 1 PER CONTAINER

MATERIAL PART NO: 711210509  
 MATERIAL: GLASS FILLED NYLON  
 VENDOR PART NO: HYLON N2015 HL NAT  
 SPECIFIC GRAVITY: 1.23  
 MAXIMUM ACCEPTABLE MOISTURE CONTENT: .2%  
 FLAME RATING: UL 94 HB  
 CURRENT CARRYING CAPACITY: 325 AMPS AT 12 VDC

SCALE FACTOR: NONE  
 ALL DIMENSIONS GIVEN AS: IN [mm]  
 TOLERANCES UNLESS OTHERWISE SPECIFIED:  
 MOLDED PARTS: ±.030" [±0.8mm]  
 HARDWARE ITEMS: ±.010" [±0.25mm]



VTE Incorporated  
 5437 Robinson Road, P.O. Box 790  
 Pellston, Michigan 49769  
 Telephone: 1-800-527-9256, 231-539-8000  
 FAX: 231-539-0914

REF:	DATE:	DRN BY:	RAS	WEIGHT:
CUSTOMER DIMS	8-23-21	CHK'D BY:	PAK	
TITLE: PASSTHROUGH JUNCTION STUD				
MATERIAL: GLASS FILLED NYLON			PART NO: 77231N09	
COLOR:	BLUE	DRG CLASS	REV K	