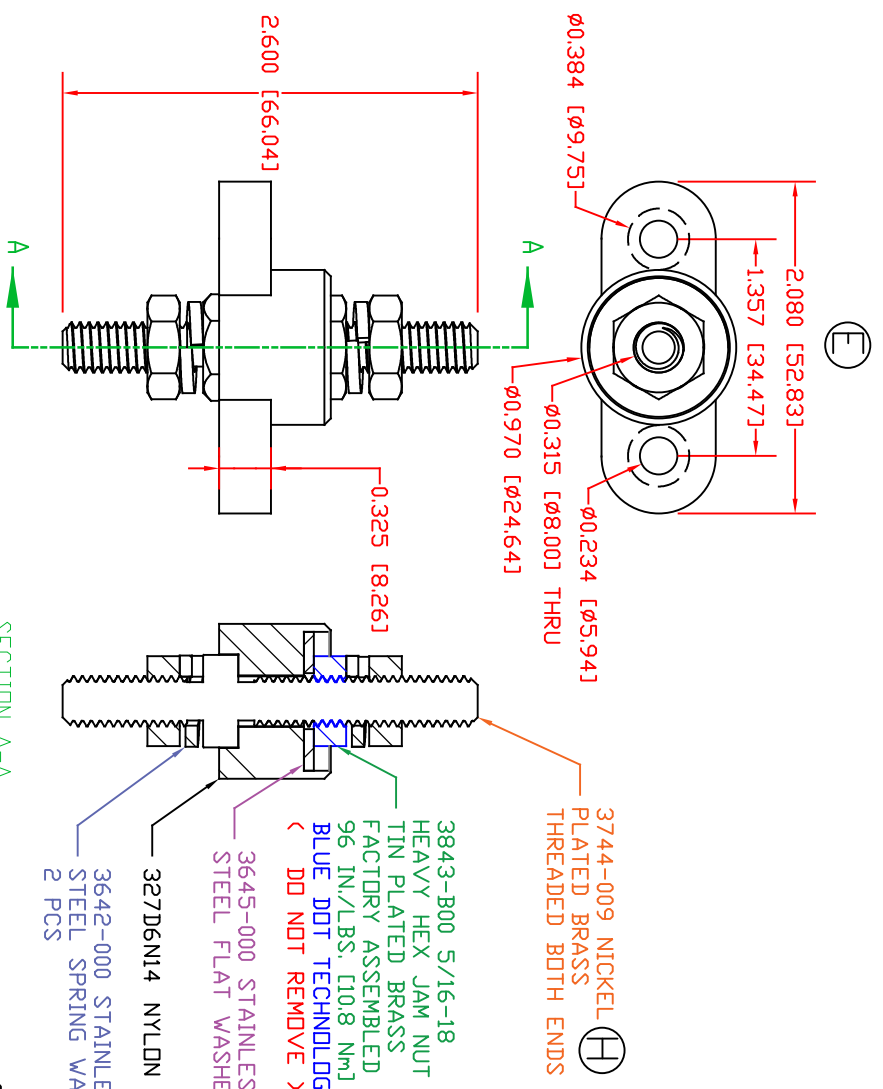
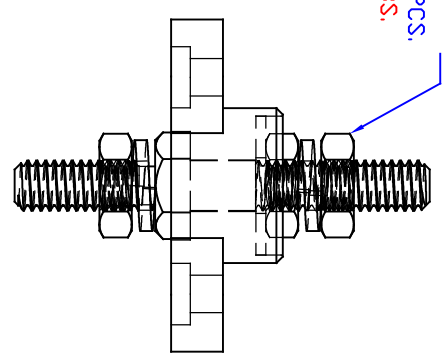


THE INFORMATION CONTAINED IN THIS DRAWING IS THE SOLE PROPERTY OF VTE INCORPORATED. ANY REPRODUCTION IN PART OR WHOLE WITHOUT THE WRITTEN PERMISSION OF VTE INCORPORATED IS PROHIBITED. VTE MAKES NO WARRANTY, EXPRESSED OR IMPLIED, AS TO THE SUITABILITY OF A PRODUCT FOR ANY INTENDED USE. THE CUSTOMER SHALL BEAR THE SOLE RESPONSIBILITY OF DETERMINING THE SUITABILITY OF ANY VTE PRODUCT FOR ITS END USE.



LR	REVISIONS	DATE	INT.
A	REDRAWN AND REDESIGNED	12-28-07	BRH
B	ADDED FACTORY TORQUE NOTE	2-14-12	BRH
C	REPLACED P/N 3843-001 WITH P/N 3843-009	1-16-17	RAS
D	3843-B00 WAS 3843-000	6-13-17	JMM
E	UPDATED AND ADDED DIMENSIONS FOR MOUNTING	7-31-17	RAS
F	ADDED ELECTRICAL VALUES	10-25-18	RAS
G	UPDATED BASE PART NUMBER FROM 327D3	8-12-21	RAS
H	UPDATED CORE PART NUMBER FROM 3744-000	8-12-21	RAS
I	UPDATED TORQUE VALUE FROM 122 IN./LBS. [14.9 Nm]	8-12-21	RAS
J	UPDATED TORQUE VALUE FROM 112 IN./LBS. [12.65 Nm]	8-12-21	RAS
K	UPDATED ELECTRICAL VALUES	10-18-22	RAS

3843-009 5/16-18 HEAVY HEX JAM NUT STAINLESS STEEL, 2 PCS. (MAX TORQUE 101 IN./LBS. [11.41 Nm])



INCLUDES P-16808110001 BLUE DOT MULTI LABEL, 1 PER CONTAINER

MATERIAL PART NO: 111210514UL
 MATERIAL: GLASS FILLED NYLON
 VENDOR PART NO: HYLON N2015 HL BK
 SPECIFIC GRAVITY: 1.23
 MELTING TEMP: 515 F [268 C]
 UL RATING: 94 HB

CURRENT CARRYING CAPACITY: 325 AMPS AT 12 VDC

SCALE FACTOR: NONE
 ALL DIMENSIONS GIVEN AS: IN [mm]
 TOLERANCES UNLESS OTHERWISE SPECIFIED:
 MOLDED PARTS: ±.030" [±0.8mm]
 HARDWARE ITEMS: ±.010" [±0.25mm]

VTE Incorporated
 5437 Robinson Road, P.O. Box 790
 Pellston, Michigan 49769
 Telephone: 1-800-527-9256, 231-539-8000
 FAX: 231-539-0914

REF: CUSTOMER DIMS	DATE: 8-23-21	DRN BY: RAS	WEIGHT:
TITLE: PASSTHROUGH JUNCTION STUD	CHK'D BY: PJK		
MATERIAL: GLASS FILLED NYLON		PART NO:	77231N14
COLOR: BLACK	DRG CLASS: REV K		