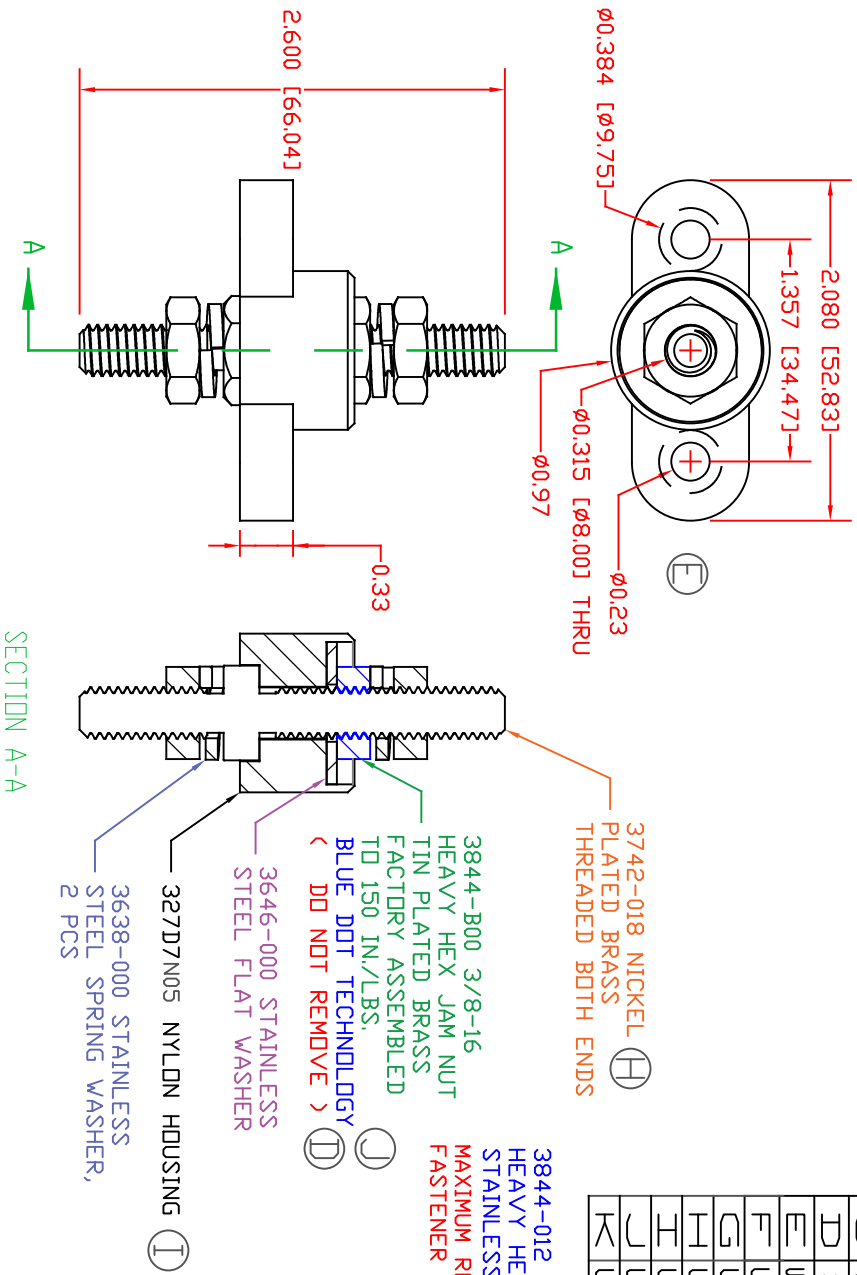


THE INFORMATION CONTAINED IN THIS DRAWING IS THE SOLE PROPERTY OF VTE INCORPORATED. ANY REPRODUCTION IN PART OR WHOLE WITHOUT THE WRITTEN PERMISSION OF VTE INCORPORATED IS PROHIBITED. VTE MAKES NO WARRANTY, EXPRESSED OR IMPLIED, AS TO THE SUITABILITY OF A PRODUCT FOR ANY INTENDED USE. THE CUSTOMER SHALL BEAR THE SOLE RESPONSIBILITY OF DETERMINING THE SUITABILITY OF ANY VTE PRODUCT FOR ITS END USE.



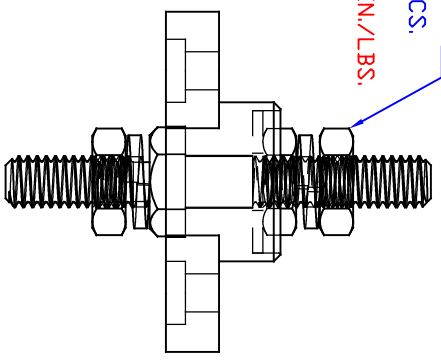
3742-018 NICKEL PLATED BRASS THREADED BOTH ENDS

3844-B00 3/8-16 HEAVY HEX JAM NUT TIN PLATED BRASS FACTORY ASSEMBLED TD 150 IN./LBS. BLUE DOT TECHNOLOGY < DO NOT REMOVE >

3646-000 STAINLESS STEEL FLAT WASHER  
327D7N05 NYLON HOUSING  
3638-000 STAINLESS STEEL SPRING WASHER, 2 PCS

LR.	REVISIONS	DATE	INT.
A	3844-012 WAS 3844-000	11-01-16	JMM
B	REVISED TORQUE FROM 144 IN./LBS.	05-11-17	RAS
C	ADDED LOCKTITE FOR CONTACT NUT ASSEMBLY	05-11-17	RAS
D	3844-B00 WAS 3844-000	6-02-17	JMM
E	UPDATED AND ADDED DIMENSIONS FOR MOUNTING	7-31-17	RAS
F	UPDATED ELECTRICAL VALUES	10-25-18	RAS
G	UPDATED TORQUE VALUE	7-01-20	EJE
H	UPDATED PART # FROM 3742-000	8-18-21	RAS
I	UPDATED PART # FROM 327D4	8-23-21	RAS
J	UPDATED TORQUE VALUE FROM 160 IN/LBS	8-26-21	RAS
K	UPDATED ELECTRICAL VALUES	10-18-22	RAS

3844-012 3/8-16 HEAVY HEX JAM NUT STAINLESS STEEL, 2 PCS. MAXIMUM RECOMMENDED FASTENER TORQUE: 136 IN./LBS.



INCLUDES P-16808110001 BLUE DOT MULTI LABEL, 1 PER CONTAINER

MATERIAL PART NO: 7111210505  
 MATERIAL: GLASS FILLED NYLON  
 VENDOR PART NO: NYLON N2015 HL NAT  
 SPECIFIC GRAVITY: 1.23  
 MELTING TEMP: 515 F [268 C]  
 UL RATING: UL 94 HB

CURRENT CARRYING CAPACITY: (375 AMP @ 12VDC)

SCALE FACTOR: 1 NONE  
 ALL DIMENSIONS GIVEN AS: In [mm]  
 TOLERANCES UNLESS OTHERWISE SPECIFIED:  
 MOLDED PARTS: ±.030" [±0.8mm]  
 HARDWARE ITEMS: ±.010" [±0.25mm]

VTE Incorporated  
 5437 Robinson Road, P.O. Box 790  
 Pellston, Michigan 49769  
 Telephone: 1-800-527-9256, 231-539-8000  
 FAX: 231-539-0914

REF:	DATE:	DRN BY:	RAS	WEIGHT:
CUSTOMER DIMS	8-26-21	CHK'D BY:	PAK	
TITLE:	JUNCTION BLOCK, STUD TYPE, PASS-THRU		SCALE:	NONE
MATERIAL:	GLASS FILLED NYLON		PART NO:	77237N05
COLOR:	YELLOW	DRG CLASS	REV K	