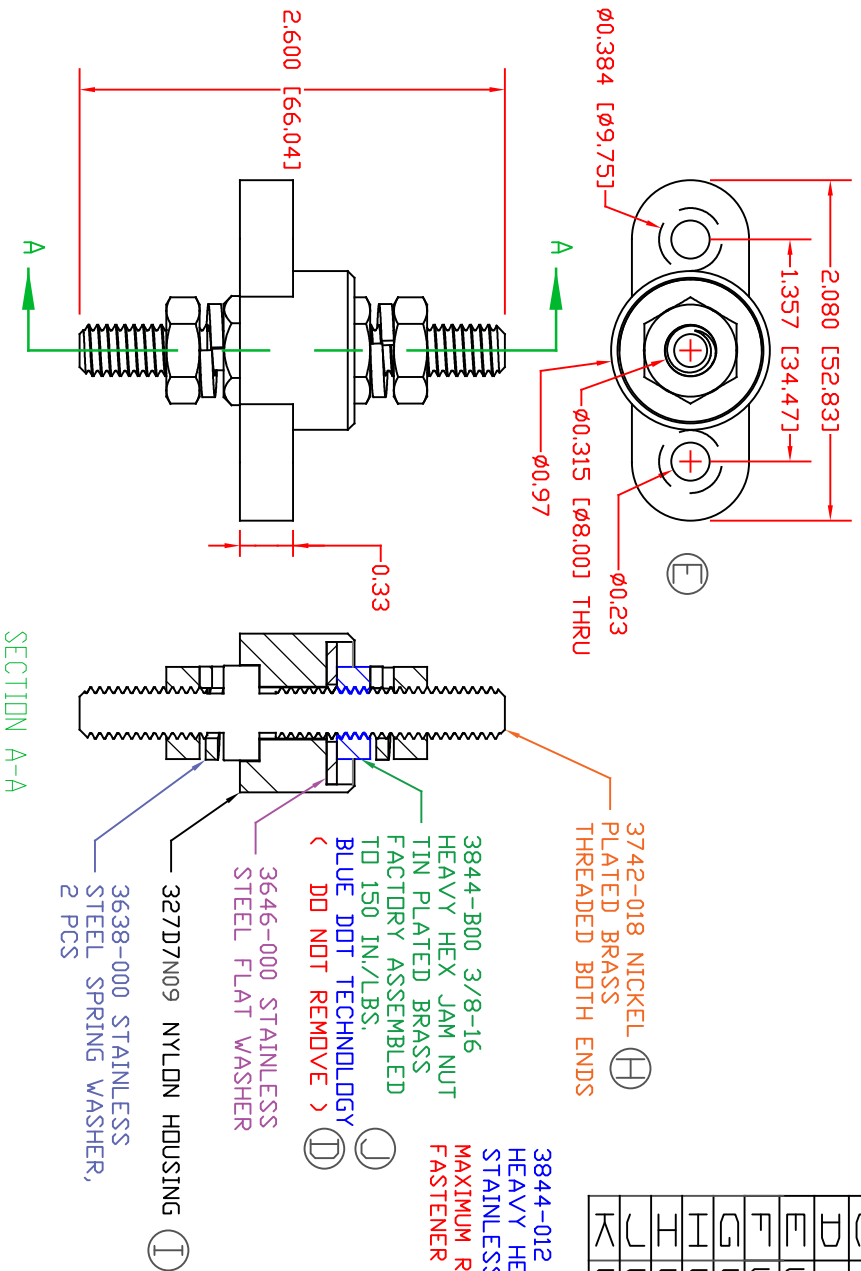
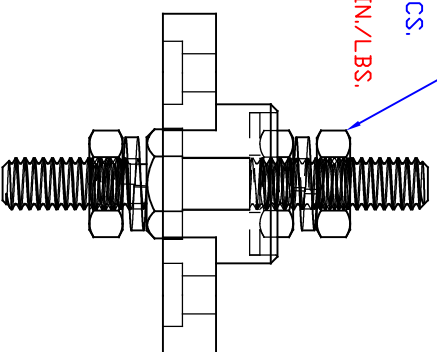


THE INFORMATION CONTAINED IN THIS DRAWING IS THE SOLE PROPERTY OF VTE INCORPORATED. ANY REPRODUCTION IN PART OR WHOLE WITHOUT THE WRITTEN PERMISSION OF VTE INCORPORATED IS PROHIBITED. VTE MAKES NO WARRANTY, EXPRESSED OR IMPLIED, AS TO THE SUITABILITY OF A PRODUCT FOR ANY INTENDED USE. THE CUSTOMER SHALL BEAR THE SOLE RESPONSIBILITY OF DETERMINING THE SUITABILITY OF ANY VTE PRODUCT FOR ITS END USE.



LR.	REVISIONS	DATE	INT.
A	3844-012 WAS 3844-000	11-01-16	JMM
B	REVISED TORQUE FROM 144 IN./LBS.	05-11-17	RAS
C	ADDED LOCKTITE FOR CONTACT NUT ASSEMBLY	05-11-17	RAS
D	3844-B00 WAS 3844-000	6-02-17	JMM
E	UPDATED AND ADDED DIMENSIONS FOR MOUNTING	7-31-17	RAS
F	UPDATED ELECTRICAL VALUES	10-25-18	RAS
G	UPDATED TORQUE VALUE	7-01-20	EJE
H	UPDATED PART # FROM 3742-000	8-18-21	RAS
I	UPDATED PART # FROM 327D4	8-23-21	RAS
J	UPDATED TORQUE VALUE FROM 160 IN/LBS	8-26-21	RAS
K	UPDATED ELECTRICAL VALUES	10-18-22	RAS

3844-012 3/8-16 (A)  
 HEAVY HEX JAM NUT  
 STAINLESS STEEL, 2 PCS.  
 MAXIMUM RECOMMENDED  
 FASTENER TORQUE: 136 IN./LBS.



INCLUDES P-16808110001 BLUE DOT MULTI LABEL, 1 PER CONTAINER

MATERIAL PART NO: 7111210509

MATERIAL: GLASS FILLED NYLON

VENDOR PART NO: HYLON N2015 HL NAT

SPECIFIC GRAVITY: 1.23

MAXIMUM ACCEPTABLE MOISTURE CONTENT: .2%

FLAME RATING: UL 94 HB

CURRENT CARRYING CAPACITY: (375 AMP @ 12VDC)

SCALE FACTOR: 1, NONE  
 ALL DIMENSIONS GIVEN AS: In, [mm]  
 TOLERANCES UNLESS OTHERWISE SPECIFIED:  
 MOLDED PARTS:  $\pm 0.30^*$  [ $\pm 0.8mm$ ]  
 HARDWARE ITEMS:  $\pm 0.10^*$  [ $\pm 0.25mm$ ]

VTE Incorporated  
 5437 Robinson Road, P.O. Box 790  
 Pellston, Michigan 49769  
 Telephone: 1-800-527-9256, 231-539-8000  
 FAX: 231-539-0914

REF: CUSTOMER DIMS	DATE: 8-26-21	DRN BY: RAS	WEIGHT:
TITLE: JUNCTION BLOCK, STUD TYPE, PASS-THRU	CHK'D BY: PJK		
MATERIAL: GLASS FILLED NYLON	PART NO: 77237N09		
COLOR: BLUE	DRG CLASS: REV K		