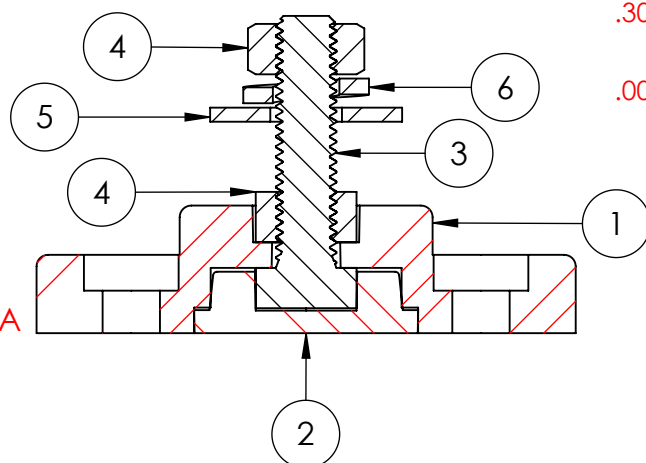
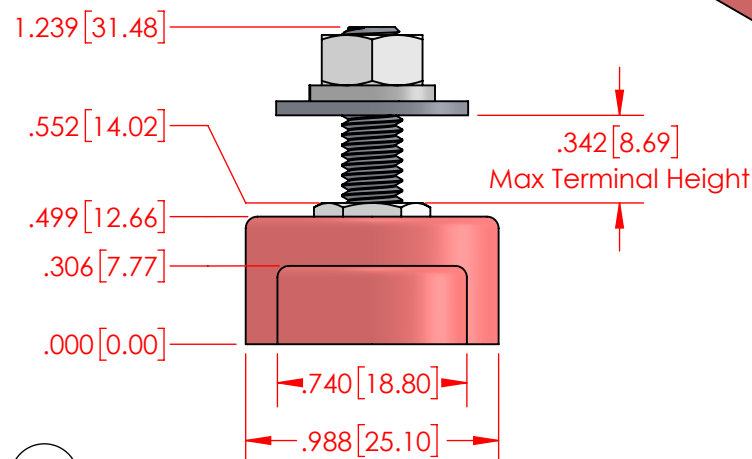
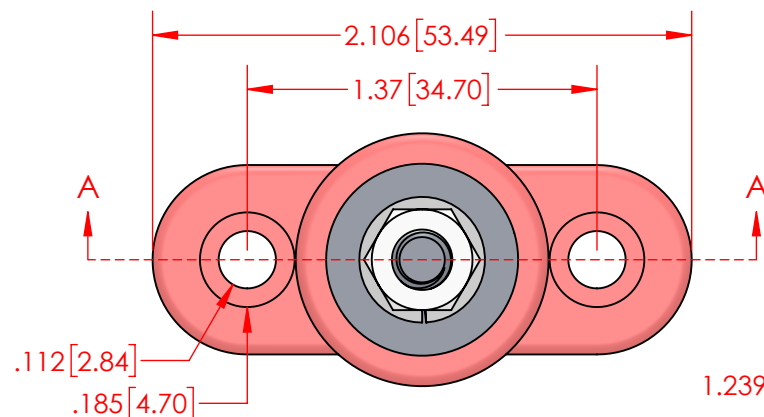
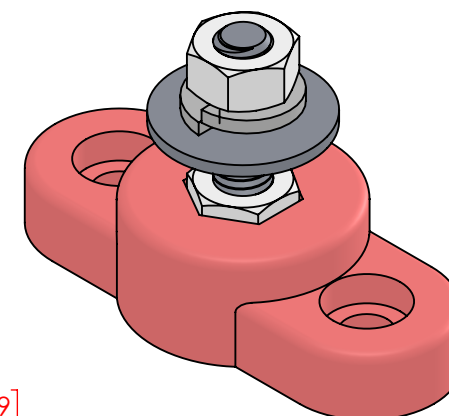


## REVISIONS

REV.	DESCRIPTION	DATE	APPROVED
------	-------------	------	----------



SECTION A-A

# IMPORTANT

Amperage ratings are for reference only. Current capacity is determined by the cables used, not the junction post. Current ratings are related to expected cable capacities.

Current Rating : 15 Amp @ 12VDC

MAXIMUM VOLTAGE : 48 VDC

MATERIAL PART NO: 7111210502  
MATERIAL: GLASS FILLED NYLON  
VENDOR PART NO: HYLON N2015 NAT

MAX M6 FASTENER TORQUE: 10 IN./LBS. [1.12 Nm]

Assembly Weight :  
0.06 Lbs. [26.4 g]

ALL DIMENSIONS GIVEN AS : INCH [METRIC]  
TOLERANCES UNLESS OTHERWISE SPECIFIED :  
MOLDED PRODUCTS :  $\pm .030$ " /  $\pm 0.8$ mm  
HARDWARE PRODUCTS :  $\pm .010$ " /  $\pm 0.25$ mm

PRINTED COPIES ARE NOT CONTROLLED

## PROPRIETARY AND CONFIDENTIAL

THE INFORMATION CONTAINED IN THIS DRAWING IS THE SOLE PROPERTY OF VTE INCORPORATED. ANY REPRODUCTION IN PART OR AS A WHOLE WITHOUT THE WRITTEN PERMISSION OF VTE INCORPORATED PROHIBITED.



# VTE INCORPORATED

5437 Robinson Road, P.O. Box 790  
Pellston, Michigan 49769 USA  
Telephone : 1-800-527-9256, 231-539-8000  
Fax : 231-539-0914, EFax : 231-344-5914

REV	NAME	DATE
DRAWN BY:	RAS	11-02-23
CHECKED BY:	PJK	11-02-23
SIZE	DO NOT SCALE DRAWING	

TITLE: M6 Low Profile Power Post

DWG. NO. 77306CN02