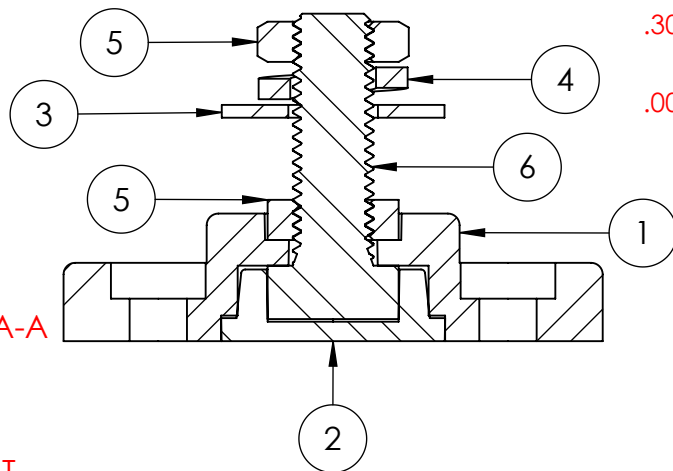


SECTION A-A



IMPORTANT

Amperage ratings are for reference only. Current capacity is determined by the cables used, not the junction post. Current ratings are related to expected cable capacities.

Current Rating : 15 Amp @ 12VDC
 MAXIMUM VOLTAGE : 48 VDC
 MATERIAL PART NO: 1111210514UL
 MATERIAL: GLASS FILLED NYLON
 VENDOR PART NO: HYLON N2015 HL BK
 MAX 8mm FASTENER TORQUE: 96 IN./LBS. [10.8 Nm]

Assembly Weight :
 0.08 Lbs. [34.8 g]

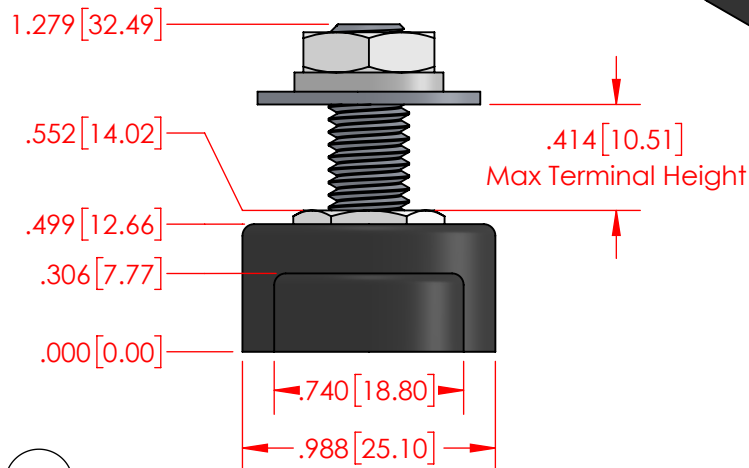
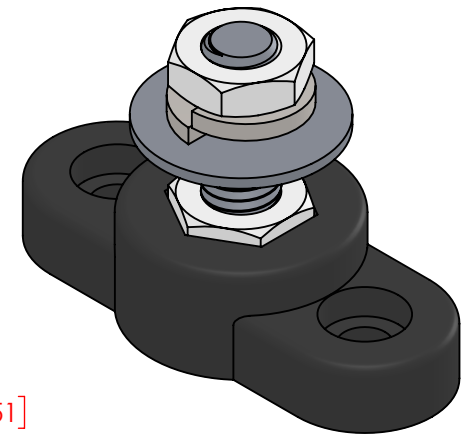
ALL DIMENSIONS GIVEN AS : INCH [METRIC]
 TOLERANCES UNLESS OTHERWISE SPECIFIED :
 MOLDED PRODUCTS : $\pm .030"$ / $\pm 0.8\text{mm}$
 HARDWARE PRODUCTS : $\pm .010"$ / $\pm 0.25\text{mm}$

PRINTED COPIES ARE NOT CONTROLLED

PROPRIETARY AND CONFIDENTIAL

THE INFORMATION CONTAINED IN THIS DRAWING IS THE SOLE PROPERTY OF VTE INCORPORATED. ANY REPRODUCTION IN PART OR AS A WHOLE WITHOUT THE WRITTEN PERMISSION OF VTE INCORPORATED PROHIBITED.

REVISIONS			
REV.	DESCRIPTION	DATE	APPROVED



ITEM NO.	PART NUMBER	DESCRIPTION	QTY.
1	320N1N14	Nylon Power Post Base 8mm (Black)	1
2	337N1N14	Nylon Base Plug .3125in_.8mm (Black)	1
3	3645-000	5/16" 18-8 Stainless Steel Flat Washer	1
4	3638-002	M8 18-8 Stainless Steel Lock Washer	1
5	3846-000	M8 316 Stainless Steel Heavy Hex Jam Nut	2
6	3731-000	M8 x 1.25 18-8 Stainless Steel Bolt 25mm	1



VTE INCORPORATED

5437 Robinson Road, P.O. Box 790
 Pellston, Michigan 49769 USA
 Telephone : 1-800-527-9256, 231-539-8000
 Fax : 231-539-0914, Efax : 231-344-5914

REV	NAME	DATE
DRAWN BY:	RAS	11-02-23
SIZE	CHECKED BY:	DATE
A	PJK	11-02-23
DO NOT SCALE DRAWING		

TITLE: 8mm Low Profile Power Post
 DWG. NO. 77308CN14