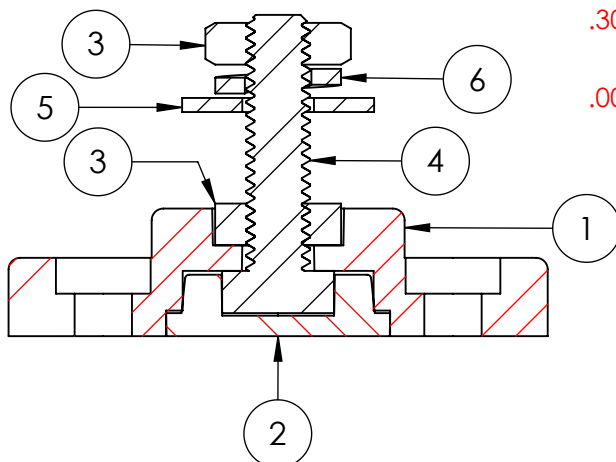
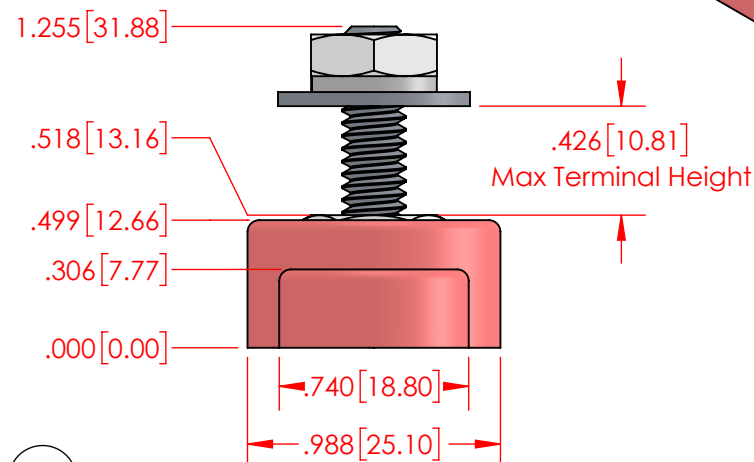
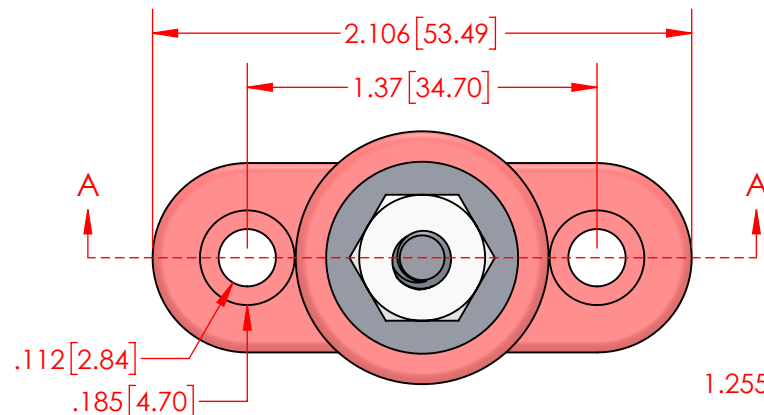
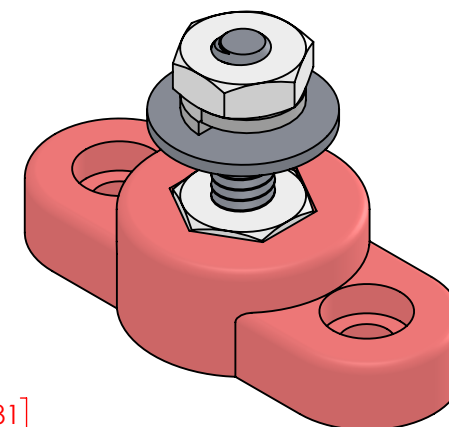


REVISIONS

REV.	DESCRIPTION	DATE	APPROVED
------	-------------	------	----------



SECTION A-A

IMPORTANT

Amperage ratings are for reference only. Current capacity is determined by the cables used, not the junction post. Current ratings are related to expected cable capacities.

Current Rating : 15 Amp @ 12VDC

MAXIMUM VOLTAGE : 48 VDC

MATERIAL PART NO: 7111210502
MATERIAL: GLASS FILLED NYLON
VENDOR PART NO: HYLON N2015 NAT

MAX 1/4" FASTENER TORQUE: 60 IN./LBS. [6.77 Nm]

Assembly Weight :
0.07 Lbs. [29.4 g]

ALL DIMENSIONS GIVEN AS : INCH [METRIC]
TOLERANCES UNLESS OTHERWISE SPECIFIED :
MOLDED PRODUCTS : $\pm .030"$ / $\pm 0.8\text{mm}$
HARDWARE PRODUCTS : $\pm .010"$ / $\pm 0.25\text{mm}$

PRINTED COPIES ARE NOT CONTROLLED

PROPRIETARY AND CONFIDENTIAL

THE INFORMATION CONTAINED IN THIS DRAWING IS THE SOLE PROPERTY OF VTE INCORPORATED. ANY REPRODUCTION IN PART OR AS A WHOLE WITHOUT THE WRITTEN PERMISSION OF VTE INCORPORATED PROHIBITED.



VTE INCORPORATED

5437 Robinson Road, P.O. Box 790
Pellston, Michigan 49769 USA
Telephone : 1-800-527-9256, 231-539-8000
Fax : 231-539-0914, EFax : 231-344-5914

ITEM NO.	PART NUMBER	DESCRIPTION	QTY.
1	320N3N02	Nylon Power Post Base .250in. (Red)	1
2	337N3N02	Nylon Base Plug .250in. (Red)	1
3	3842-006	1/4"-20 316 Stainless Steel Heavy Hex Jam Nut	2
4	3736-003	1/4"-20 18-8 Stainless Steel Bolt 1"	1
5	3644-000	1/4" 18-8 Stainless Steel Flat Washer	1
6	3637-000	1/4" 18-8 Stainless Steel Lock Washer	1

REV	NAME	DATE
DRAWN BY:	RAS	11-02-23
SIZE	CHECKED BY:	DATE
A	PJK	11-02-23
DO NOT SCALE DRAWING		

TITLE: 1/4" Low Profile Power Post

DWG. NO. 77325CN02