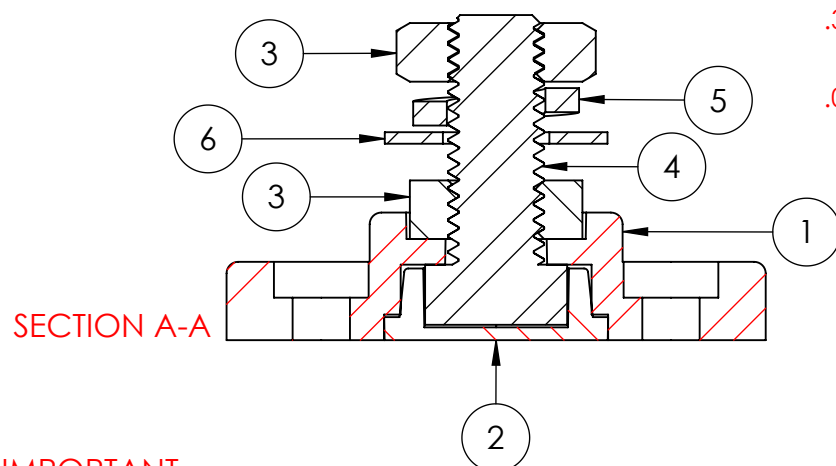
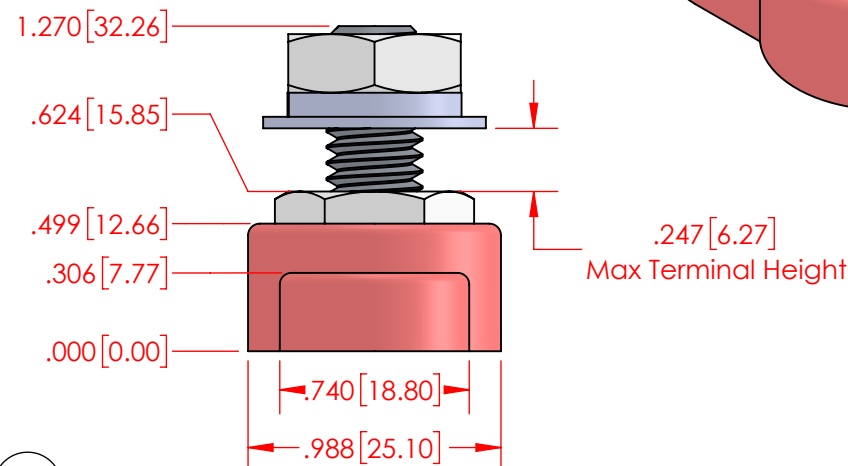
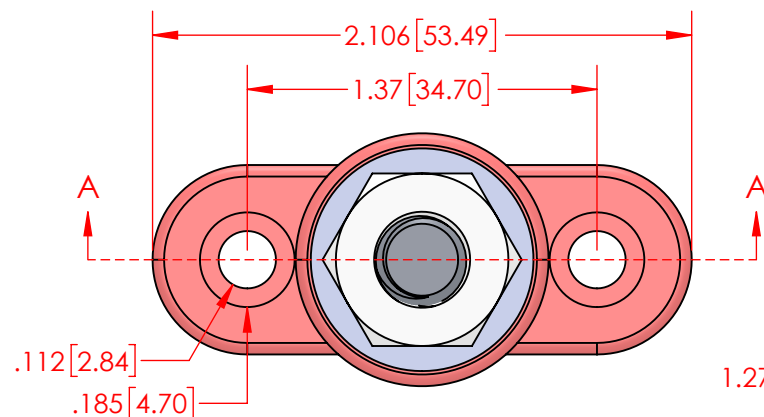
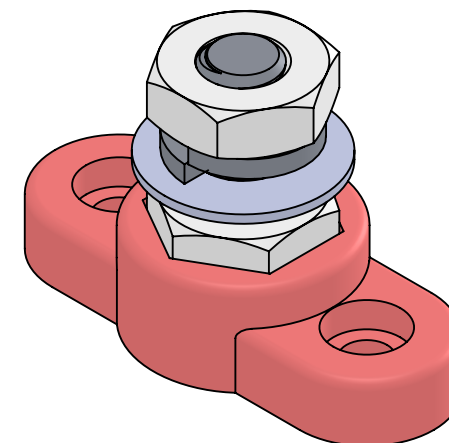


REVISIONS

REV.	DESCRIPTION	DATE	APPROVED
------	-------------	------	----------



ITEM NO.	PART NUMBER	DESCRIPTION	QTY.
1	320N5N02	Nylon Power Post Base .375in. (Red)	1
2	337N5N02	Nylon Base Plug .375in. (Red)	1
3	3844-012	3/8"-16 316 Stainless Steel Heavy Hex Jam Nut	2
4	3740-006	3/8-16 18-8 Stainless Steel Bolt 1"	1
5	3638-000	3/8" 18-8 Stainless Steel Lock Washer	1
6	3646-000	3/8" 18-8 Stainless Steel Flat Washer	1

IMPORTANT

Amperage ratings are for reference only. Current capacity is determined by the cables used, not the junction post. Current ratings are related to expected cable capacities.

Current Rating : 15 Amp @ 12VDC
 MAXIMUM VOLTAGE : 48 VDC
 MATERIAL PART NO: 7111210502
 MATERIAL: GLASS FILLED NYLON
 VENDOR PART NO: HYLON N2015 NAT
 MAX 3/8" FASTENER TORQUE: 144 IN./LBS. [16.2 Nm]

Assembly Weight :
 0.10 Lbs. [46.2 g]

ALL DIMENSIONS GIVEN AS : INCH [METRIC]
 TOLERANCES UNLESS OTHERWISE SPECIFIED :
 MOLDED PRODUCTS : $\pm .030"$ / $\pm 0.8\text{mm}$
 HARDWARE PRODUCTS : $\pm .010"$ / $\pm 0.25\text{mm}$

PRINTED COPIES ARE NOT CONTROLLED

PROPRIETARY AND CONFIDENTIAL

THE INFORMATION CONTAINED IN THIS DRAWING IS THE SOLE PROPERTY OF VTE INCORPORATED. ANY REPRODUCTION IN PART OR AS A WHOLE WITHOUT THE WRITTEN PERMISSION OF VTE INCORPORATED PROHIBITED.



VTE INCORPORATED

5437 Robinson Road, P.O. Box 790
 Pellston, Michigan 49769 USA
 Telephone : 1-800-527-9256, 231-539-8000
 Fax : 231-539-0914, Efax : 231-344-5914

REV	NAME	DATE
DRAWN BY:	RAS	11-02-23
SIZE	CHECKED BY:	DATE
A	PJK	11-02-23
DO NOT SCALE DRAWING		

TITLE: 3/8" Low Profile Power Post

DWG. NO. 77337CN02