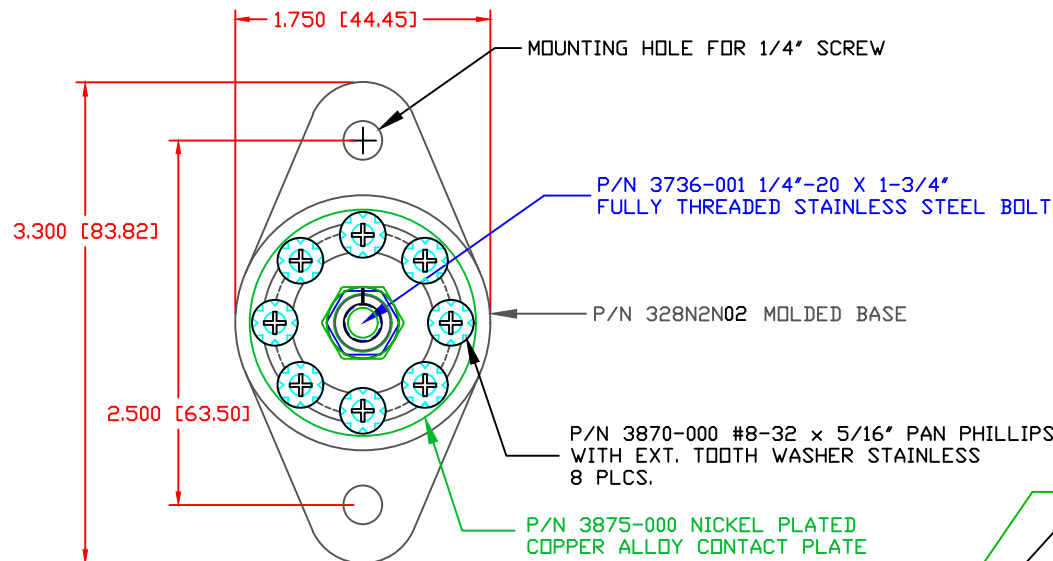


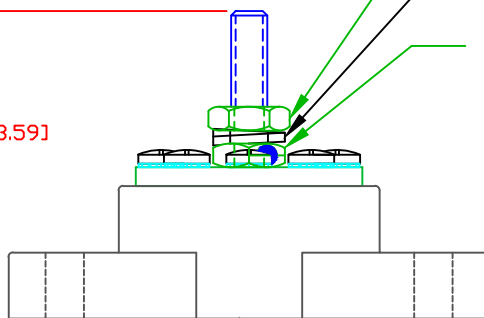
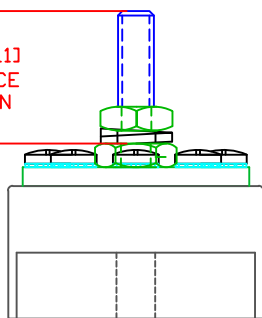
THE INFORMATION CONTAINED IN THIS DRAWING IS THE SOLE PROPERTY OF VTE INCORPORATED. ANY REPRODUCTION IN PART OR WHOLE WITHOUT THE WRITTEN PERMISSION OF VTE INCORPORATED IS PROHIBITED. VTE MAKES NO WARRANTY, EXPRESSED OR IMPLIED, AS TO THE SUITABILITY OF A PRODUCT FOR ANY INTENDED USE. THE CUSTOMER SHALL BEAR THE SOLE RESPONSIBILITY OF DETERMINING THE SUITABILITY OF ANY VTE PRODUCT FOR ITS END USE.

LTR.	REVISIONS	DATE	INT.
A	3842-000 WAS 3842	04APR06	BRH
B	ADDED COMPONENT P/N SUFFIXES	04-04-06	BRH
C	3842-003 WAS 3842-000	10-10-06	BRH
D	ADDED SUB ASSEMBLY P/N 37875	10-11-06	BRH
E	REMOVED SUB-ASSEMBLY NOTE P/N 37875	02-02-16	RAS
F	PN 329NOV** CHANGED TO PN 329NON**	06-27-16	MDL
G	3842-006 WAS 3842-003	03-24-17	JMM
H	3842-B01 WAS 3842-001	06-14-17	JMM



0.91 [23.11] REFERENCE DIMENSION

2.110 [53.59]



P/N 329NON02 CAVITY PLUG (NOT SHOWN) (F)

P/N 3842-006 1/4"-20 STAINLESS STEEL HEAVY JAM NUT (C) (G)

P/N 3637-000 STAINLESS STEEL SPRING LOCK WASHER

P/N 3842-B01 1/4"-20 TIN-PLATED BRASS HEAVY HEX NUT BOTTOM NUT FACTORY INSTALLED TO 72 IN./LBS. BLUE DOT TECHNOLOGY (DO NOT REMOVE) (H)

SCALE FACTOR: NONE
 ALL DIMENSIONS GIVEN AS: in [mm]
 TOLERANCES UNLESS OTHERWISE SPECIFIED:
 MOLDED PARTS: ±.030" [±0.8mm]
 HARDWARE ITEMS: ±.010" [±0.25mm]

INCLUDES P-16808110001 BLUE DOT MULTI LABEL, 1 PER CONTAINER

RECOMMENDED MAX TORQUE: 1/4"-20 60 IN./LBS.
 SCREWS 15 IN./LBS.

CURRENT RATING: 160 AMPS @ 12 VDC

VOLTAGE RATING: 48 VDC MAX.

MATERIAL PART NO: 7111210502

MATERIAL: GLASS FILLED NYLON

VENDOR PART NO: NYLON N2015 HL NAT

SPECIFIC GRAVITY: 1.23

MELTING TEMP: 515 F [268 C]

U.L. RATING: UL 94 HB

VTE Incorporated

5437 Robinson Road, P.O. Box 790
 Pellston, Michigan 49769
 Telephone: 1-800-527-9256, 231-539-8000
 FAX: 231-539-0914

REF:	DATE:	DRN BY:	BRH	WEIGHT:
CUSTOMER DIMS	04-09-03	CHK'D BY:	BRH	
TITLE:			1/4" POWER DISTRIBUTION POST	
MATERIAL:			GLASS-FILLED NYLON	
COLOR:			RED	
DRG CLASS:			REV H	
			PART NO. 77825N02	