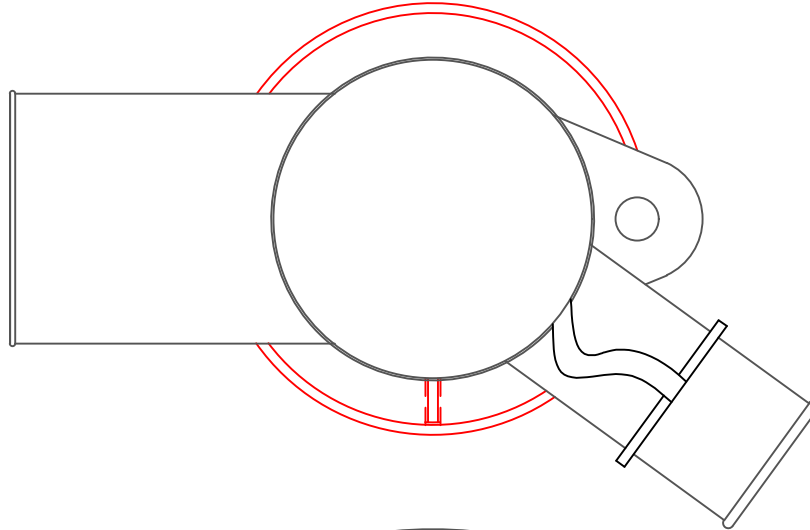
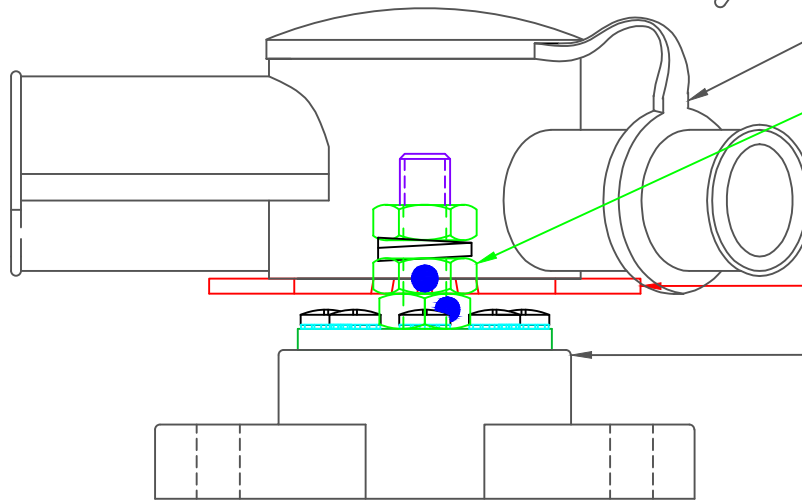


THE INFORMATION CONTAINED IN THIS DRAWING IS THE SOLE PROPERTY OF VTE INCORPORATED. ANY REPRODUCTION IN PART OR WHOLE WITHOUT THE WRITTEN PERMISSION OF VTE INCORPORATED IS PROHIBITED. VTE MAKES NO WARRANTY, EXPRESSED OR IMPLIED, AS TO THE SUITABILITY OF A PRODUCT FOR ANY INTENDED USE. THE CUSTOMER SHALL BEAR THE SOLE RESPONSIBILITY OF DETERMINING THE SUITABILITY OF ANY VTE PRODUCT FOR ITS END USE.

LTR.	REVISIONS	DATE	INT.
A	3843-B00 WAS 3843-000, ADDED "DO NOT REMOVE"	6-05-17	JMM
B	479A9P00 WAS 479AP00, 795V14 WAS 795N9V14	06-15-17	JMM



OPTIONAL MULTI  
CABLE INSULATOR  
PACK FOR 5/16"  
8-POINT POWER  
POST ASSEMBLY  
(SHOWN)



P/N 795V14 INSULATOR BOOT  
P/N 3843-B00 5/16"-18 TIN PLATED BRASS  
HEAVY HEX JAM NUT  
FACTORY ASSEMBLED TO 144 IN./LBS (A)  
BLUE DOT TECHNOLOGY  
( DO NOT REMOVE )

P/N 479A9P00 5/16" INSULATOR DISK (B)

P/N 77831N14 8-POINT POWER POST ASSEMBLY  
(NOT INCLUDED)

ALL DIMENSIONS GIVEN AS: in [mm]  
MOLDED PARTS: ±.030" [±0.8mm]  
HARDWARE ITEMS: ±.010" [±0.25mm]



VTE Incorporated  
5437 Robinson Road, P.O. Box 790  
Pellston, Michigan 49769  
Telephone: 1-800-527-9256, 231-539-8000  
FAX: 231-539-0914

REF:	DATE:	DRN BY: JMM	SCALE:
MULTI CABLE SERIES	04-07-17	CHK'D BY: RAS	NONE
TITLE: 5/16" MULTI CABLE INSULATION PACK			
MATERIAL:			PART NO.
COLOR: BLACK	DRG CLASS	REV B	778N27

DO NOT SCALE