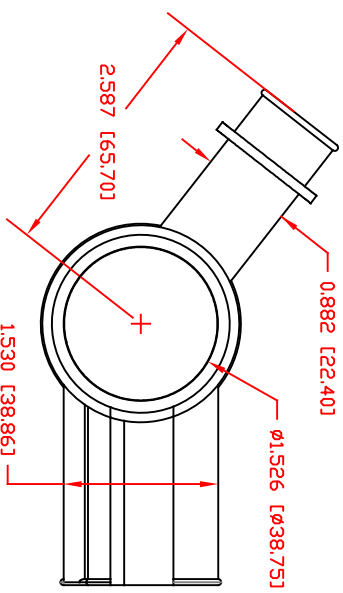
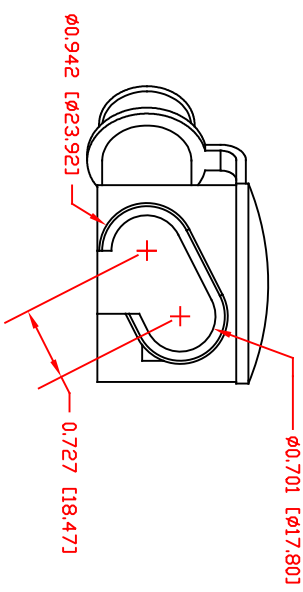
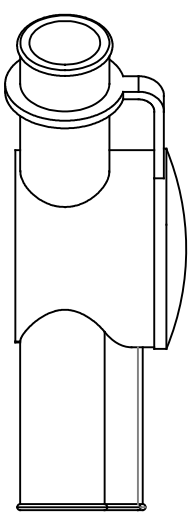
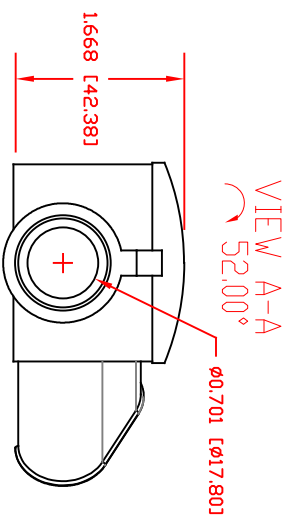
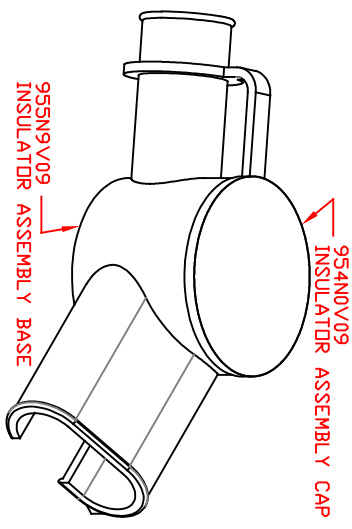
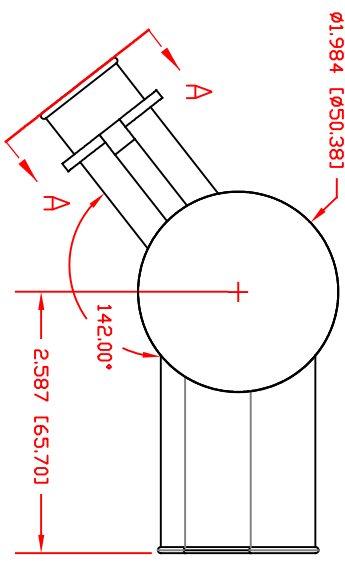


THE INFORMATION CONTAINED IN THIS DRAWING IS THE SOLE PROPERTY OF VTE INCORPORATED. ANY REPRODUCTION IN PART OR WHOLE WITHOUT THE WRITTEN PERMISSION OF VTE INCORPORATED IS PROHIBITED.VTE MAKES NO WARRANTY, EXPRESSED OR IMPLIED, AS TO THE SUITABILITY OF A PRODUCT FOR ANY INTENDED USE. THE CUSTOMER SHALL BEAR THE SOLE RESPONSIBILITY OF DETERMINING THE SUITABILITY OF ANY VTE PRODUCT FOR ITS END USE.

LTR.	REVISIONS	DATE	INT.
	REDRAWN AND UPDATED	9-14-17	RAS



MATERIAL PART NO:
MATERIAL:
VENDOR PART NO:
SHORE DUREMETER:
SPECIFIC GRAVITY:
ULT. ELONGATION %:
MELTING TEMP:
TENSILE STRENGTH PSI:
UL. RATING:

1101700109
PVC
9067-70-BLUE 1812
"A" 10 SEC. 70
1.36
310
320-340 F [160-171 C]
1100
HB

SCALE FACTOR : NONE
ALL DIMENSIONS GIVEN AS IN [mm]
TOLERANCES UNLESS OTHERWISE SPECIFIED :
MOLDED PARTS: ±.030" [±0.8mm]



VTE Incorporated
5437 Robinson Road, P.O. Box 790
Pellston, Michigan 49769
Telephone: 1-800-527-9256, 231-539-8000
FAX: 231-539-0914

REF:	DATE:	DRN BY:	RAS	WEIGHT:
CUSTOMER DIMS	9-14-17	CHK'D BY:	PJK	107 Lbs. [48.6 g]
TITLE:	MULTIPLE CABLE INSULATOR ASSEMBLY			
MATERIAL:	PVC	PART NO.		
COLOR: BLUE	DRG CLASS	REV A		
795V09				