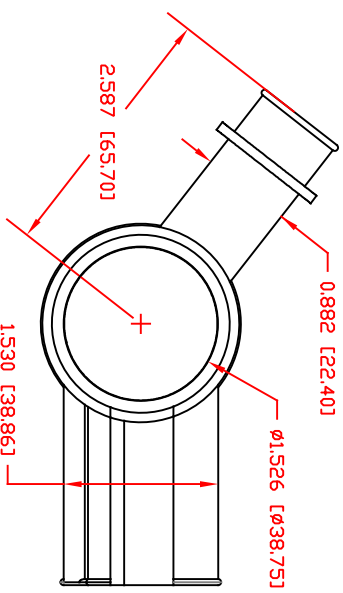
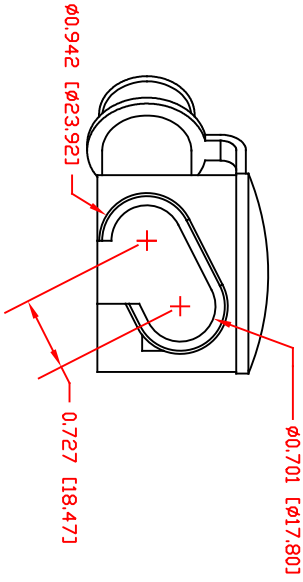
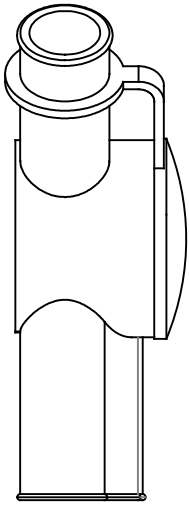
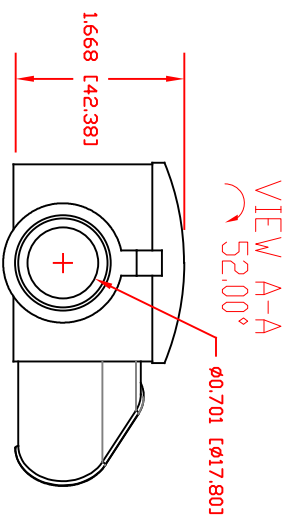
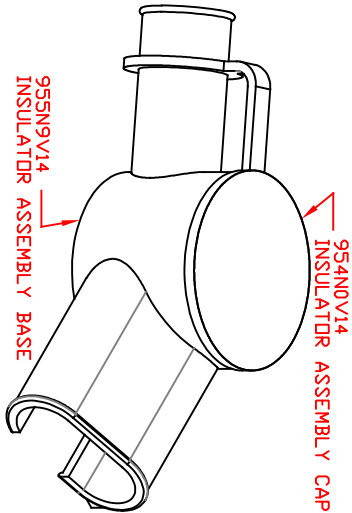
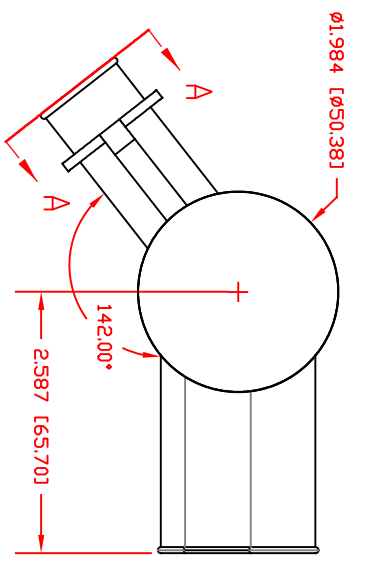


THE INFORMATION CONTAINED IN THIS DRAWING IS THE SOLE PROPERTY OF VTE INCORPORATED. ANY REPRODUCTION IN PART OR WHOLE WITHOUT THE WRITTEN PERMISSION OF VTE INCORPORATED IS PROHIBITED.VTE MAKES NO WARRANTY, EXPRESSED OR IMPLIED, AS TO THE SUITABILITY OF A PRODUCT FOR ANY INTENDED USE. THE CUSTOMER SHALL BEAR THE SOLE RESPONSIBILITY OF DETERMINING THE SUITABILITY OF ANY VTE PRODUCT FOR ITS END USE.

LTR.	REVISIONS	DATE	INT.
	REDRAWN AND UPDATED	9-14-17	RAS



MATERIAL PART NO:  
MATERIAL:  
VENDOR PART NO:  
SHORE DUREMETER:  
SPECIFIC GRAVITY:  
ULT. ELONGATION %:  
MELTING TEMP:  
BRITTLE TEMP:  
TENSILE STRENGTH PSI:  
DIELECTRIC STRENGTH, V./mil  
U.L. RATING:

1101650114  
PVC  
9812-65-BLACK  
"A" 10 SEC. 65  
1.34  
400  
315-335 F [157-168 C]  
-54 F [-48 C]  
1550 PSI  
453  
V2

SCALE FACTOR : NONE  
ALL DIMENSIONS GIVEN AS IN [mm]  
TOLERANCES UNLESS OTHERWISE SPECIFIED :  
MOLDED PARTS: ±.030" [±0.8mm]



VTE Incorporated  
5437 Robinson Road, P.O. Box 790  
Pellston, Michigan 49769  
Telephone: 1-800-527-9256, 231-539-8000  
FAX: 231-539-0914

REF:	DATE:	DRN BY:	RAS	WEIGHT:
CUSTOMER DIMS	9-14-17	CHK'D BY:	PJK	107 Lbs. [48.6 g]
TITLE: MULTIPLE CABLE INSULATOR ASSEMBLY				
MATERIAL:	PVC	PART NO.		
COLOR: BLACK	DRG CLASS	REV A		
795V14				