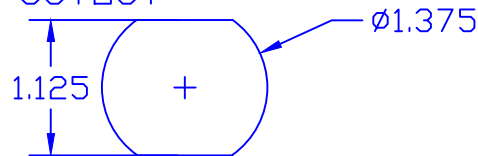


THE INFORMATION CONTAINED IN THIS DRAWING IS THE SOLE PROPERTY OF VTE INCORPORATED. ANY REPRODUCTION IN PART OR WHOLE WITHOUT THE WRITTEN PERMISSION OF VTE INCORPORATED IS PROHIBITED.

LTR.	REVISIONS	DATE	INT.
△	ADDED SPACER 330N3N02	19DEC13	BRH
⊞	ADDED FASTENER TORQUE SPEC	03-27-17	JMM

VTE MAKES NO WARRANTY, EXPRESSED OR IMPLIED, AS TO THE SUITABILITY OF A PRODUCT FOR ANY INTENDED USE. THE CUSTOMER SHALL BEAR THE SOLE RESPONSIBILITY OF DETERMINING THE SUITABILITY OF ANY VTE PRODUCT FOR ITS END USE.

USE GREENLEE
PUNCH ASSEMBLY
#60098 FOR PANEL
CUTOUT



ASSEMBLY #7A373002

P/N 3530N02
INNER PANEL BUSHING
UP TO 1/8" PANEL THICKNESS

#3838-000 3/8"-16
BRASS JAM NUT

BLUE DOT TECHNOLOGY
P/N 3740-001
3/8"-16 UNC X 1.25"
STAINLESS STEEL BOLT

#3638-000 STAINLESS STEEL
SPLIT LOCK WASHER

DO NOT SCALE

#3438N02 3/8" OUTER PANEL
BUSHING (WEATHERPROOF)

#3646-000 STAINLESS
STEEL FLATWASHER

321N9V02
TERMINAL COVER

3860-001 BRASS HEX CAP NUT

P/N 330N3N02 SPACER
(AS REQ'D.) BY INSTRUCTION
SHEET #16805110901

TOLERANCE UNLESS OTHERWISE SPECIFIED:
MOLDED ITEMS: ±.030"/±0.8mm
HARDWARE ITEMS: ±.010"/±0.25mm
RADIAL DIAMETERS TO BE MEASURED OVER MANDRELS,
RING GAGES OR PIN GAGES OF SUITABLE SIZE

⊞ MAXIMUM RECOMMENDED FASTENER TORQUE:
S.S. JAM NUT- 180 IN./LBS.
BRASS JAM NUT- 72 IN./LBS.

INCLUDES P-16808110001 BLUE DOT MULTI LABEL, 1 PER CONTAINER
MAXIMUM AMPERAGE: 50 AMPS@ 12VDC

BASE MATERIAL: GLASS-REINFORCED NYLON
BASE MATERIAL U.L. RATING: 94 HB



VTE Incorporated
5437 Robinson Road, P.O. Box 790
Pellston, Michigan 49769
Telephone: 1-800-527-9256, 231-539-8000
FAX: 231-539-0914

REF:	DATE:	DRN BY:	BRH	WEIGHT:
7A SERIES	06AUG03	CHK'D BY:	BRH	
TITLE: POWER CONNECTOR, AUX. 3/8" STUD 1/8" MAX PANEL			SCALE: NONE	
MATERIAL:		PART NO.		
COLOR: RED	DRG CLASS REV B	7A373002		