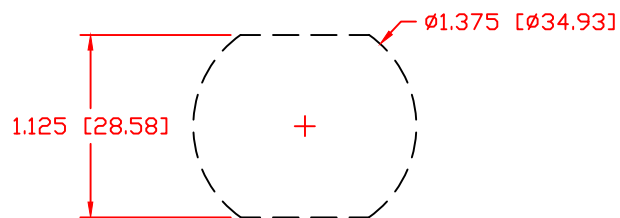


THE INFORMATION CONTAINED IN THIS DRAWING IS THE SOLE PROPERTY OF VTE INCORPORATED. ANY REPRODUCTION IN PART OR WHOLE WITHOUT THE WRITTEN PERMISSION OF VTE INCORPORATED IS PROHIBITED. VTE MAKES NO WARRANTY, EXPRESSED OR IMPLIED, AS TO THE SUITABILITY OF A PRODUCT FOR ANY INTENDED USE. THE CUSTOMER SHALL BEAR THE SOLE RESPONSIBILITY OF DETERMINING THE SUITABILITY OF ANY VTE PRODUCT FOR ITS END USE.

LTR.	REVISIONS	DATE	INT.
A	3838-000 WAS 3838, 3844-003 ADDED 2 PLCS.	3-02-07	BRH
B	ADDED CALLOUT FOR SPACER AND INSTRUCTION SHEET	5-01-07	BRH
C	3739-001 WAS 3739	3-08-11	BRH
D	MAX. TORQUE SPECS UPDATED	10-15-14	BRH
E	3844-012 WAS 3844-003	11-02-16	BRH
F	REVISED TORQUE SPEC FROM 180 IN./LBS	8-25-17	RAS
G	ADDED RECOMMENDED PANEL THICKNESS	8-30-17	RAS
H	PART NUMBER REVISED FROM 3838-000	9-07-17	RAS

USE GREENLEE PUNCH
ASSEMBLY #60098
FOR PANEL CUTOUT



(B) ASSEMBLY #7B3730N02
ASSEMBLY INSTRUCTIONS
SHEET DRAWING #16805110901

#3530N02 INNER
PANEL BUSHING

(E) #3844-012 3/8"-16
STAINLESS STEEL
HEX JAM NUT (2) PLCS.

(C) P/N 3739-001
BRASS HEX THREADED STUD

#3638-000 3/8" STAINLESS STEEL
LOCKWASHER (2) PLCS.

#3437N02 OUTER PANEL BUSHING

#3639-000 STAINLESS STEEL
FLAT WASHER 1" OD X 3/8" ID X .125

ITEMS SHOWN FOR ILLUSTRATIVE
PURPOSE, NOT INCLUDED:
1/0 GA. TERMINAL LUGS (2 PLCS)

(H) BLUE DOT TECHNOLOGY
#3838-B00 3/8"-16 BRASS JAM NUT
(DO NOT REMOVE ONCE INSTALLED)

P/N 330N3N02 SPACER

(G) RECOMMENDED FOR PANEL
THICKNESS RANGE OF
MINIMUM MAXIMUM
0.065" - 0.095"
[1.65mm] [2.41mm]

SCALE FACTOR : NONE
ALL DIMENSIONS GIVEN AS: in [mm]
TOLERANCES UNLESS OTHERWISE SPECIFIED :
MOLDED PARTS: ±.030" [±0.8mm]
HARDWARE ITEMS: ±.010" [±0.25mm]

MATERIAL PART NO: 7111210502
MATERIAL: GLASS FILLED NYLON
VENDOR PART NO: HYLON N2015 HL NAT
SPECIFIC GRAVITY: 1.23
MELTING TEMP: 515 F [268 C]
U.L. RATING: UL 94 HB

MAXIMUM AMPERAGE: 300 AMPS @ 12VDC

(D) MAXIMUM RECOMMENDED FASTENER TORQUE:
BRASS JAM NUT: 72 IN./LBS. [8.1 Nm]
(F) STAINLESS STEEL JAM NUT: 160 IN./LBS. [18.0 Nm]
INCLUDES P-16808110001 BLUE DOT MULTI LABEL, 1 PER CONTAINER



VTE Incorporated

5437 Robinson Road, P.O. Box 790
Pellston, Michigan 49769
Telephone: 1-800-527-9256, 231-539-8000
FAX: 231-539-0914

REF:	DATE:	DRN BY:	RAS	WEIGHT:
CUSTOMER DIMS	8-24-21	CHK'D BY:	PJK	
TITLE:		POWER BUSHING 3/8" STUD		
MATERIAL:	GLASS FILLED NYLON	PART NO.		
COLOR:	RED	DRG CLASS	REV H	7B3730N02