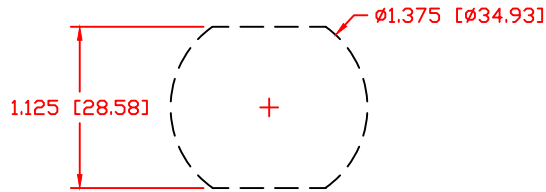


THE INFORMATION CONTAINED IN THIS DRAWING IS THE SOLE PROPERTY OF VTE INCORPORATED. ANY REPRODUCTION IN PART OR WHOLE WITHOUT THE WRITTEN PERMISSION OF VTE INCORPORATED IS PROHIBITED. VTE MAKES NO WARRANTY, EXPRESSED OR IMPLIED, AS TO THE SUITABILITY OF A PRODUCT FOR ANY INTENDED USE. THE CUSTOMER SHALL BEAR THE SOLE RESPONSIBILITY OF DETERMINING THE SUITABILITY OF ANY VTE PRODUCT FOR ITS END USE.

LTR.	REVISIONS	DATE	INT.
A	3838-000 WAS 3838, 3844-003 ADDED 2 PLCS.	3-02-07	BRH
B	ADDED CALLOUT FOR SPACER AND INSTRUCTION SHEET	5-01-07	BRH
C	ADDED CALLOUT FOR P/N 379 PANEL SEAL	2-13-08	BRH
D	3739-001 WAS 3739	3-08-11	BRH
E	MAX. TORQUE SPECS UPDATED	10-15-14	BRH
F	3844-012 WAS 3844-003	11-02-16	JMM
G	REVISED TORQUE SPEC FROM 180 IN./LBS	8-25-17	RAS
H	ADDED RECOMMENDED PANEL THICKNESS	8-30-17	RAS
I	PART NUMBER REVISED FROM 3838-000	9-11-17	RAS

USE GREENLEE PUNCH
ASSEMBLY #60098
FOR PANEL CUTOUT



ⓑ ASSEMBLY #7B3730N02W
ASSEMBLY INSTRUCTIONS
SHEET DRAWING #16805110901

ⓒ

P/N 330N3N02 SPACER
#3438N02 OUTER PANEL BUSHING
#3639-000 STAINLESS STEEL
FLAT WASHER 1" OD X 3/8" ID X .125

#3530N02 INNER
PANEL BUSHING

ⓕ #3844-012 3/8"-16
STAINLESS STEEL
HEX JAM NUT (2) PLCS.

ⓓ P/N 3739-001
BRASS HEX THREADED STUD

INCLUDES: (1) 232N3V02
WEATHERPROOFING TERMINAL COVER
(PACKAGED SEPARATELY)

ITEMS SHOWN FOR ILLUSTRATIVE
PURPOSE, NOT INCLUDED:
1/0 GA. TERMINAL LUGS (2 PLCS)

#3638-000 3/8" STAINLESS STEEL
LOCKWASHER (2) PLCS.

Ⓢ BLUE DOT TECHNOLOGY
#3838-B00 3/8"-16 BRASS JAM NUT
(DO NOT REMOVE ONCE INSTALLED)

P/N 379N9V02 PANEL SEAL
(PACKAGED SEPARATELY)

ⓗ RECOMMENDED FOR PANEL
THICKNESS RANGE OF
MINIMUM MAXIMUM
0.035" - 0.065"
[0.88mm] [1.64mm]

SCALE FACTOR : NONE
ALL DIMENSIONS GIVEN AS: in [mm]
TOLERANCES UNLESS OTHERWISE SPECIFIED :
MOLDED PARTS: ±.030" [±0.8mm]
HARDWARE ITEMS: ±.010" [±0.25mm]

MATERIAL PART NO: 7111210502
MATERIAL: GLASS FILLED NYLON
VENDOR PART NO: HYLON N2015 HL NAT
SPECIFIC GRAVITY: 1.23
MELTING TEMP: 515 F [268 C]
U.L. RATING: UL 94 HB

MAXIMUM AMPERAGE: 300 AMPS @ 12VDC

ⓔ MAXIMUM RECOMMENDED FASTENER TORQUE:
BRASS JAM NUT: 72 IN./LBS. [8.1 Nm]
ⓖ STAINLESS STEEL JAM NUT: 160 IN./LBS. [18.0 Nm]

INCLUDES P-16808110001 BLUE DOT MULTI LABEL, 1 PER CONTAINER



VTE Incorporated
5437 Robinson Road, P.O. Box 790
Pellston, Michigan 49769
Telephone: 1-800-527-9256, 231-539-8000
FAX: 231-539-0914

REF: CUSTOMER DIMS	DATE: 8-23-21	DRN BY: RAS	WEIGHT:
		CHK'D BY: PJK	
TITLE: POWER BUSHING 3/8" STUD WEATHERPROOF			
MATERIAL: GLASS FILLED NYLON		PART NO. 7B3730N02W	
COLOR: RED	DRG CLASS REV I		