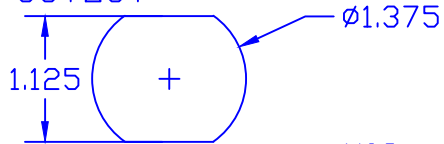


THE INFORMATION CONTAINED IN THIS DRAWING IS THE SOLE PROPERTY OF VTE INCORPORATED. ANY REPRODUCTION IN PART OR WHOLE WITHOUT THE WRITTEN PERMISSION OF VTE INCORPORATED IS PROHIBITED.

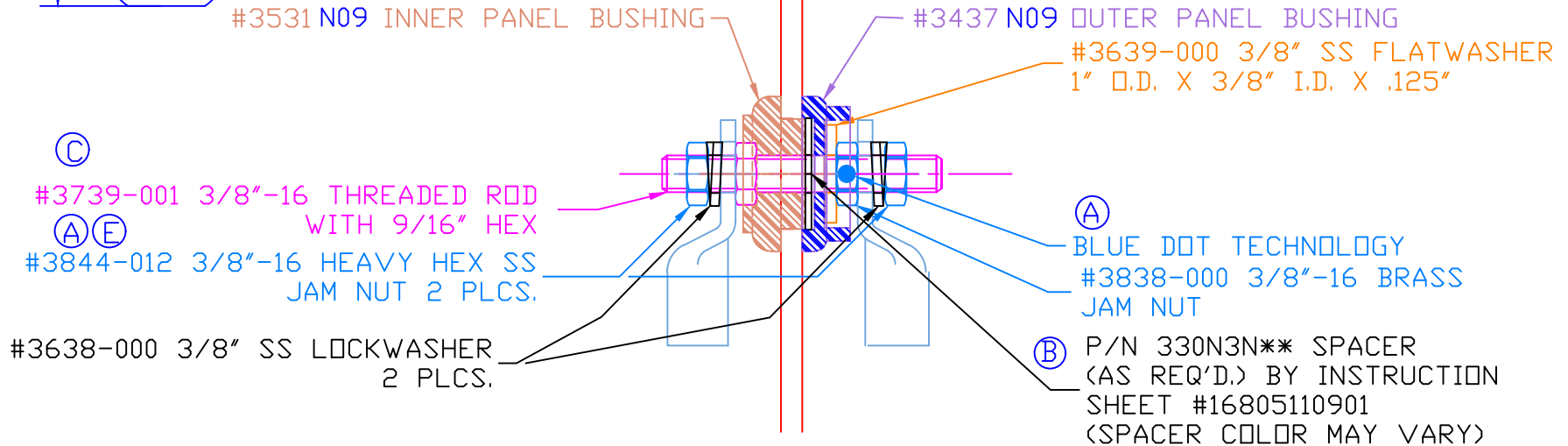
VTE MAKES NO WARRANTY, EXPRESSED OR IMPLIED, AS TO THE SUITABILITY OF A PRODUCT FOR ANY INTENDED USE. THE CUSTOMER SHALL BEAR THE SOLE RESPONSIBILITY OF DETERMINING THE SUITABILITY OF ANY VTE PRODUCT FOR ITS END USE.

LTR.	REVISIONS	DATE	INT.
A	3838-000 WAS 3838, 3844-003 ADDED 2 PLCS.	02MAR07	BRH
B	ADDED CALLOUT FOR SPACER AND INSTRUCTION SHEET	01MAY07	BRH
C	3739-001 WAS 3739	08MAR11	BRH
D	MAX. TORQUE SPECS UPDATED	16OCT14	BRH
E	3844-012 WAS 3844-003	11-02-16	JMM
F	REVISED TORQUE SPEC FROM 180 IN./LBS	8-25-17	RAS

USE GREENLEE
PUNCH ASSEMBLY
#60098 FOR PANEL
CUTOUT



ASSEMBLY #7B3731N09



③ #3739-001 3/8"-16 THREADED ROD
WITH 9/16" HEX
①⑤ #3844-012 3/8"-16 HEAVY HEX SS
JAM NUT 2 PLCS.
#3638-000 3/8" SS LOCKWASHER
2 PLCS.

④ #3437 N09 OUTER PANEL BUSHING
#3639-000 3/8" SS FLATWASHER
1" O.D. X 3/8" I.D. X .125"
② BLUE DOT TECHNOLOGY
#3838-000 3/8"-16 BRASS
JAM NUT
⑥ P/N 330N3N** SPACER
(AS REQ'D.) BY INSTRUCTION
SHEET #16805110901
(SPACER COLOR MAY VARY)

#3531 N09 INNER PANEL BUSHING

TOLERANCE UNLESS OTHERWISE SPECIFIED:
MOLDED PRODUCTS ONLY: ±0.030"/±0.8mm
HARDWARE ITEMS: ±0.010"/±0.25mm
RADIAL DIAMETERS TO BE MEASURED OVER MANDRELS,
RING GAGES OR PIN GAGES OF SUITABLE SIZE


INCLUDES P-16808110001 BLUE DOT MULTI LABEL, 1 PER CONTAINER
MAXIMUM AMPERAGE: 300 AMPS @ 12VDC

④⑤ MAXIMUM RECOMMENDED FASTENER TORQUE:
S.S. JAM NUT- 160 IN./LBS.
BRASS JAM NUT- 72 IN./LBS.

BASE MATERIAL:
BASE MATERIAL U.L. RATING:
VTE MATERIAL P/N:
ITEMS SHOWN FOR ILLUSTRATIVE
PURPOSE, NOT INCLUDED:
1/0 GA. TERMINAL LUGS (2 PLACES)

GLASS-REINFORCED NYLON
94 HB
7111210509

DO NOT SCALE

		VTE Incorporated 5437 Robinson Road, P.O. Box 790 Pellston, Michigan 49769 Telephone: 1-800-527-9256, 231-539-8000 FAX: 231-539-0914	
		REF:	DATE:
	02JAN03	CHK'D BY: BRH	
TITLE: POWER BUSHING 3/8" STUD 1/4" MAX PANEL			SCALE:
MATERIAL:		PART NO.	
COLOR: BLUE	DRG CLASS REV F	7B3731N09	