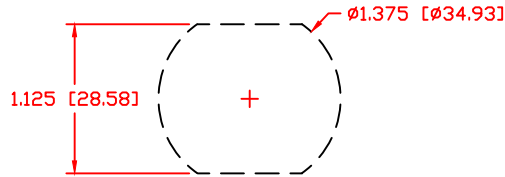


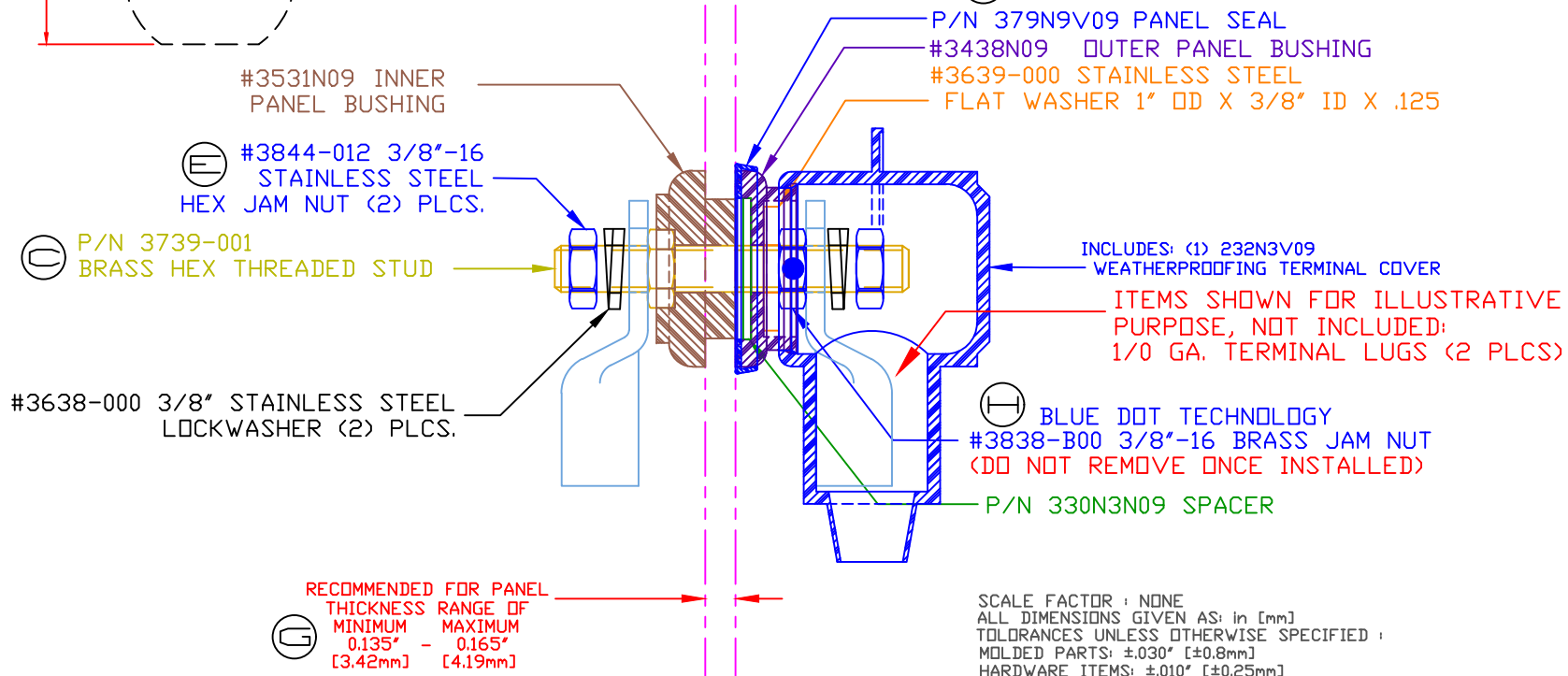
THE INFORMATION CONTAINED IN THIS DRAWING IS THE SOLE PROPERTY OF VTE INCORPORATED. ANY REPRODUCTION IN PART OR WHOLE WITHOUT THE WRITTEN PERMISSION OF VTE INCORPORATED IS PROHIBITED. VTE MAKES NO WARRANTY, EXPRESSED OR IMPLIED, AS TO THE SUITABILITY OF A PRODUCT FOR ANY INTENDED USE. THE CUSTOMER SHALL BEAR THE SOLE RESPONSIBILITY OF DETERMINING THE SUITABILITY OF ANY VTE PRODUCT FOR ITS END USE.

LTR.	REVISIONS	DATE	INT.
A	3838-000 WAS 3838, 3844-003 ADDED 2 PLCS.	3-02-07	BRH
B	ADDED CALLOUT FOR SPACER AND INSTRUCTION SHEET	5-01-07	BRH
C	3739-001 WAS 3739	3-08-11	BRH
D	MAX. TORQUE SPECS UPDATED	10-16-14	BRH
E	3844-012 WAS 3844-003	11-02-16	JMM
F	REVISED TORQUE SPEC FROM 180 IN./LBS	8-25-17	RAS
G	ADDED RECOMMENDED PANEL THICKNESS	8-30-17	RAS </td
H	PART NUMBER REVISED FROM 3838-000	9-11-17	RAS
I	UPDATED PART NUMBER FOR COLOR	11-13-17	RAS

USE GREENLEE PUNCH  
ASSEMBLY #60098  
FOR PANEL CUTOUT



ⓑ ASSEMBLY #7B3731N09W  
ASSEMBLY INSTRUCTIONS  
SHEET DRAWING #16805110901



Ⓒ RECOMMENDED FOR PANEL THICKNESS RANGE OF  
MINIMUM MAXIMUM  
0.135" - 0.165"  
[3.42mm] [4.19mm]

SCALE FACTOR : NONE  
ALL DIMENSIONS GIVEN AS: in [mm]  
TOLERANCES UNLESS OTHERWISE SPECIFIED :  
MOLDED PARTS: ±.030" [±0.8mm]  
HARDWARE ITEMS: ±.010" [±0.25mm]

MATERIAL PART NO:  
MATERIAL:  
VENDOR PART NO:  
SPECIFIC GRAVITY:  
MELTING TEMP:  
U.L. RATING:

7111210509 ⓑ  
GLASS FILLED NYLON  
DURETHAN BKV 15 H 3.0 000000  
1.23  
415 F [213 C]  
UL 94 HB

ⓓ MAXIMUM AMPERAGE: 300 AMPS @ 12VDC  
ⓓ MAXIMUM RECOMMENDED FASTENER TORQUE:  
BRASS JAM NUT: 72 IN./LBS. [8.1 Nm]  
ⓕ STAINLESS STEEL JAM NUT: 160 IN./LBS. [18.0 Nm]  
INCLUDES P-16808110001 BLUE DOT MULTI LABEL, 1 PER CONTAINER

VTE Incorporated  
5437 Robinson Road, P.O. Box 790  
Pellston, Michigan 49769  
Telephone: 1-800-527-9256, 231-539-8000  
FAX: 231-539-0914

REF: CUSTOMER DIMS	DATE: 1-02-03	DRN BY: BRH CHK'D BY: RAS	WEIGHT:
TITLE: POWER BUSHING 3/8" STUD WEATHERPROOF			
MATERIAL: GLASS FILLED NYLON		PART NO. 7B3731N09W	
COLOR: BLUE	DRG CLASS REV I		