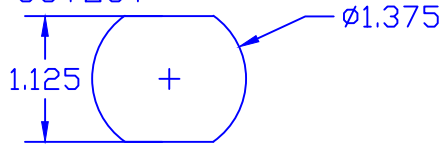


THE INFORMATION CONTAINED IN THIS DRAWING IS THE SOLE PROPERTY OF VTE INCORPORATED. ANY REPRODUCTION IN PART OR WHOLE WITHOUT THE WRITTEN PERMISSION OF VTE INCORPORATED IS PROHIBITED.

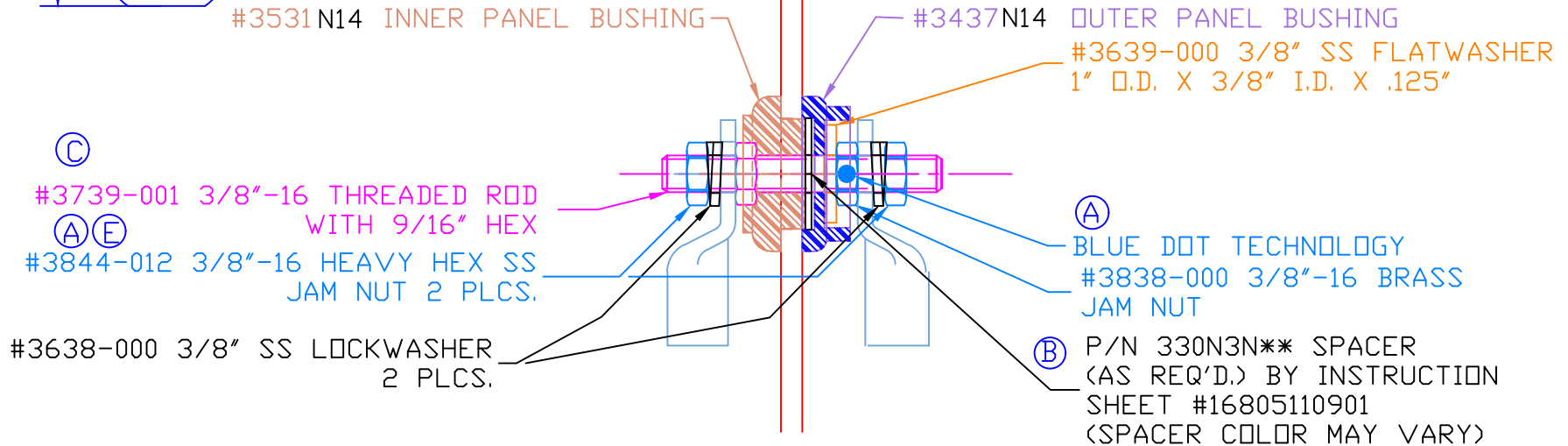
VTE MAKES NO WARRANTY, EXPRESSED OR IMPLIED, AS TO THE SUITABILITY OF A PRODUCT FOR ANY INTENDED USE. THE CUSTOMER SHALL BEAR THE SOLE RESPONSIBILITY OF DETERMINING THE SUITABILITY OF ANY VTE PRODUCT FOR ITS END USE.

| LTR. | REVISIONS | DATE | INT. |
|------|--|----------|------|
| A | 3838-000 WAS 3838, 3844-003 ADDED 2 PLCS. | 02MAR07 | BRH |
| B | ADDED CALLOUT FOR SPACER AND INSTRUCTION SHEET | 01MAY07 | BRH |
| C | 3739-001 WAS 3739 | 08MAR11 | BRH |
| D | MAX. TORQUE SPECS UPDATED | 16OCT14 | BRH |
| E | 3844-012 WAS 3844-003 | 11-02-16 | JMM |
| F | REVISED TORQUE SPEC FROM 180 IN./LBS | 8-25-17 | RAS |

USE GREENLEE
PUNCH ASSEMBLY
#60098 FOR PANEL
CUTOUT



ASSEMBLY #7B3731N14



③ #3739-001 3/8"-16 THREADED ROD WITH 9/16" HEX
①② #3844-012 3/8"-16 HEAVY HEX SS JAM NUT 2 PLCS.

#3638-000 3/8" SS LOCKWASHER 2 PLCS.

④ BLUE DOT TECHNOLOGY #3838-000 3/8"-16 BRASS JAM NUT

⑤ P/N 330N3N** SPACER (AS REQ'D.) BY INSTRUCTION SHEET #16805110901 (SPACER COLOR MAY VARY)

TOLERANCE UNLESS OTHERWISE SPECIFIED:
MOLDED PRODUCTS ONLY: ±0.030"/±0.8mm
HARDWARE ITEMS: ±0.010"/±0.25mm
RADIAL DIAMETERS TO BE MEASURED OVER MANDRELS,
RING GAGES OR PIN GAGES OF SUITABLE SIZE

INCLUDES P-16808110001 BLUE DOT MULTI LABEL, 1 PER CONTAINER
MAXIMUM AMPERAGE: 300 AMPS @ 12VDC


⑥⑦ MAXIMUM RECOMMENDED FASTENER TORQUE:
S.S. JAM NUT- 160 IN./LBS.
BRASS JAM NUT- 72 IN./LBS.

BASE MATERIAL:
BASE MATERIAL U.L. RATING:

GLASS-REINFORCED NYLON
94 HB

ITEMS SHOWN FOR ILLUSTRATIVE
PURPOSE, NOT INCLUDED:
1/0 GA. TERMINAL LUGS (2 PLACES)

DO NOT SCALE

| | | | |
|---|--------------------|---|------------------|
|  | | VTE Incorporated 5437 Robinson Road, P.O. Box 790 Pellston, Michigan 49769 Telephone: 1-800-527-9256, 231-539-8000 FAX: 231-539-0914 | |
| | | REF: | DATE: 02JAN03 |
| TITLE: POWER BUSHING 3/8" STUD 1/4" MAX PANEL | | | SCALE: |
| MATERIAL: | | PART NO. 7B3731N14 | |
| COLOR: BLACK | DRG CLASS REV F | | |