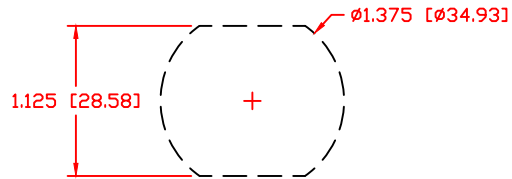


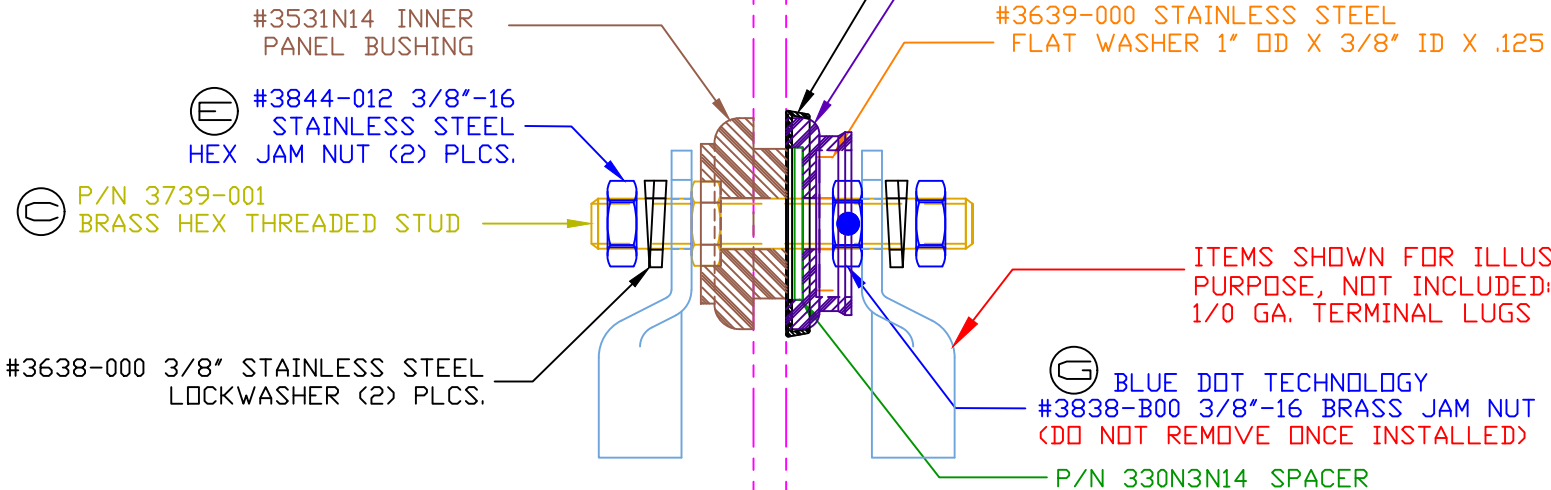
THE INFORMATION CONTAINED IN THIS DRAWING IS THE SOLE PROPERTY OF VTE INCORPORATED. ANY REPRODUCTION IN PART OR WHOLE WITHOUT THE WRITTEN PERMISSION OF VTE INCORPORATED IS PROHIBITED. VTE MAKES NO WARRANTY, EXPRESSED OR IMPLIED, AS TO THE SUITABILITY OF A PRODUCT FOR ANY INTENDED USE. THE CUSTOMER SHALL BEAR THE SOLE RESPONSIBILITY OF DETERMINING THE SUITABILITY OF ANY VTE PRODUCT FOR ITS END USE.

| LTR. | REVISIONS                                      | DATE     | INT. |
|------|--|----------|------|
| A    | 3838-000 WAS 3838, 3844-003 ADDED 2 PLCS.      | 3-02-07  | BRH  |
| B    | ADDED CALLOUT FOR SPACER AND INSTRUCTION SHEET | 5-01-07  | BRH  |
| C    | 3739-001 WAS 3739                              | 3-08-11  | BRH  |
| D    | MAX. TORQUE SPECS UPDATED                      | 10-16-14 | BRH  |
| E    | 3844-012 WAS 3844-003                          | 11-02-16 | JMM  |
| F    | REVISED TORQUE SPEC FROM 180 IN./LBS           | 8-25-17  | RAS  |
| G    | PART NUMBER REVISED FROM 3838-000              | 9-11-17  | RAS  |
| H    | UPDATED PART NUMBER FOR COLOR                  | 11-13-17 | RAS  |

USE GREENLEE PUNCH  
ASSEMBLY #60098  
FOR PANEL CUTOUT



(B) ASSEMBLY #7B3731N14W  
ASSEMBLY INSTRUCTIONS  
SHEET DRAWING #16805110901



ITEMS SHOWN FOR ILLUSTRATIVE PURPOSE, NOT INCLUDED:  
1/0 GA. TERMINAL LUGS (2 PLCS)


SCALE FACTOR: NONE  
ALL DIMENSIONS GIVEN AS: in [mm]  
TOLERANCES UNLESS OTHERWISE SPECIFIED:  
MOLDED PARTS: ±.030" [±0.8mm]  
HARDWARE ITEMS: ±.010" [±0.25mm]

(H) MATERIAL PART NO: 111210514UL  
MATERIAL: GLASS FILLED NYLON  
VENDOR PART NO: DURETHAN BKV 15 H 2.0 901510  
SPECIFIC GRAVITY: 1.23  
MELTING TEMP: 415 F [213 C]  
U.L. RATING: UL 94 HB

MAXIMUM AMPERAGE: 300 AMPS @ 12VDC

(D) MAXIMUM RECOMMENDED FASTENER TORQUE:  
BRASS JAM NUT: 72 IN./LBS. [8.1 Nm]  
(F) STAINLESS STEEL JAM NUT: 160 IN./LBS. [18.0 Nm]

INCLUDES P-16808110001 BLUE DOT MULTI LABEL, 1 PER CONTAINER



VTE Incorporated  
5437 Robinson Road, P.O. Box 790  
Pellston, Michigan 49769  
Telephone: 1-800-527-9256, 231-539-8000  
FAX: 231-539-0914

|   |               |               |         |
|---|---------------|---------------|---------|
| REF: CUSTOMER DIMS                          | DATE: 1-02-03 | DRN BY: BRH   | WEIGHT: |
|   |               | CHK'D BY: RAS |         |
| TITLE: POWER BUSHING 3/8" STUD WEATHERPROOF |               |               |         |
| MATERIAL: GLASS FILLED NYLON                |               | PART NO.      |         |
| COLOR: BLACK                                |               | 7B3731N14WX2  |         |
| DRG CLASS: REV H                            |               |               |         |