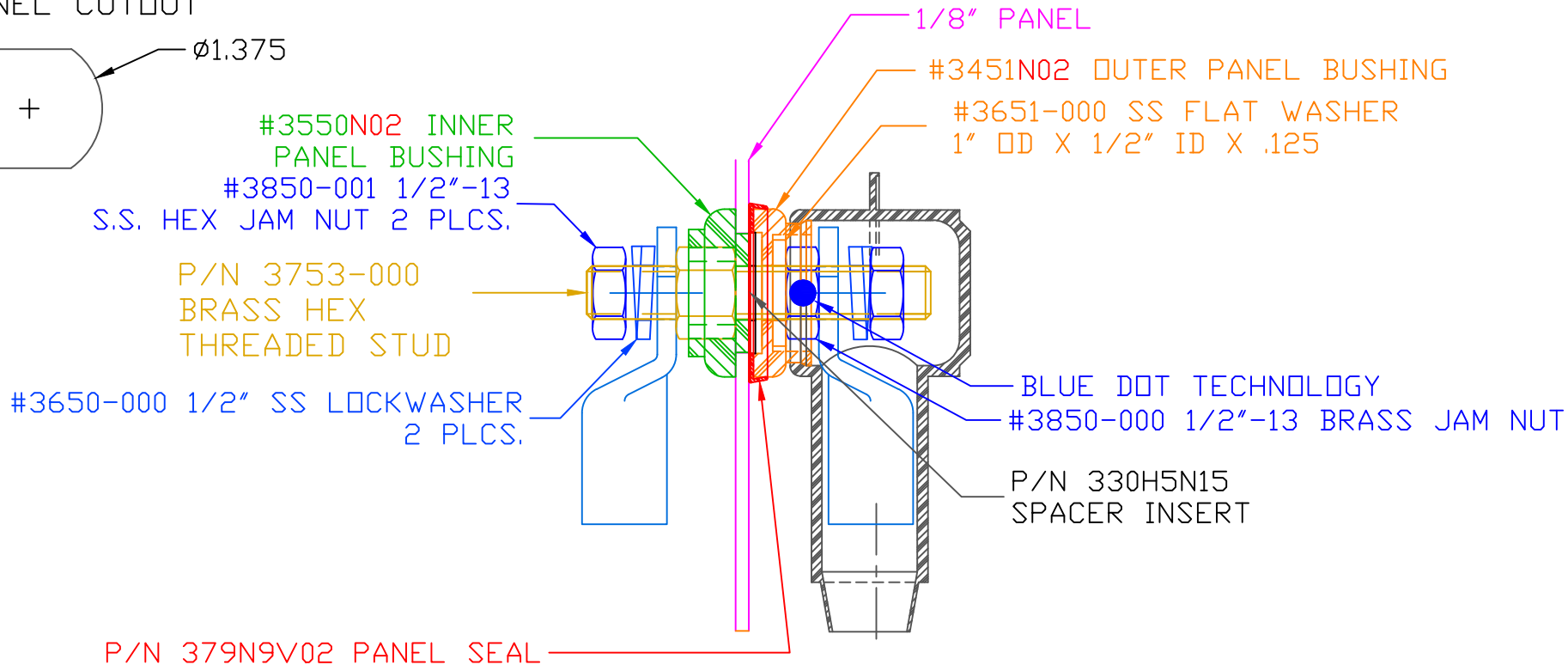
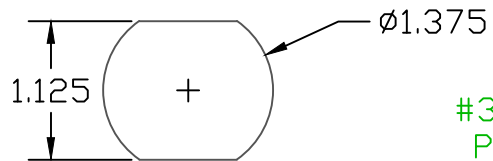


THE INFORMATION CONTAINED IN THIS DRAWING IS THE SOLE PROPERTY OF VTE INCORPORATED. ANY REPRODUCTION IN PART OR WHOLE WITHOUT THE WRITTEN PERMISSION OF VTE INCORPORATED IS PROHIBITED. VTE MAKES NO WARRANTY, EXPRESSED OR IMPLIED, AS TO THE SUITABILITY OF A PRODUCT FOR ANY INTENDED USE. THE CUSTOMER SHALL BEAR THE SOLE RESPONSIBILITY OF DETERMINING THE SUITABILITY OF ANY VTE PRODUCT FOR ITS END USE.

LTR.	REVISIONS	DATE	INT.
------	-----------	------	------

USE GREENLEE PUNCH
ASSEMBLY #60098
FOR PANEL CUTOUT



SCALE FACTOR : NONE
ALL DIMENSIONS GIVEN AS: in [mm]
TOLERANCES UNLESS OTHERWISE SPECIFIED :
MOLDED PARTS: ±.030" [±0.8mm]
HARDWARE ITEMS: ±.010" [±0.25mm]

INCLUDES P-16808110001 BLUE DOT MULTI LABEL, 1 PER CONTAINER
MAXIMUM AMPERAGE: 500 AMPS @ 12VDC
MAXIMUM RECOMMENDED FASTENER TORQUE:
BRASS JAM NUT: 240 IN./LBS.
S.S. JAM NUT: 180 IN./LBS.

BASE MATERIAL: GLASS-REINFORCED NYLON
BASE MATERIAL U.L. RATING: 94 HB
INCLUDES: (1) 232E4V02 WEATHERPROOFING TERMINAL COVER

ITEMS SHOWN FOR ILLUSTRATIVE
PURPOSE, NOT INCLUDED:

4/0 GA. TERMINAL LUGS (2 PLACES)



VTE Incorporated
5437 Robinson Road, P.O. Box 790
Pellston, Michigan 49769
Telephone: 1-800-527-9256, 231-539-8000
FAX: 231-539-0914

REF:	DATE: 02JAN03	DRN BY: RAS CHK'D BY: RAS	WEIGHT:
TITLE: POWER BUSHING 1/2" STUD 1/8" MAX PANEL WEATHERPROOF SPECIAL FOR KOLDBAN			SCALE:
MATERIAL:		PART NO. 7B5040N02W	
COLOR: RED	DRG CLASS		